



189, Cloatley Crescent, Royal Wootton Bassett, SN4 7FX

Guide Price £160,000

richard james

Village & Country Homes

richard
james



Cloatley Crescent

Royal Wootton Bassett

Leasehold



No Chain! Nestled in the heart of Royal Wootton Bassett, this immaculately presented two-bedroom, first-floor apartment effortlessly combines modern elegance with unrivaled convenience.

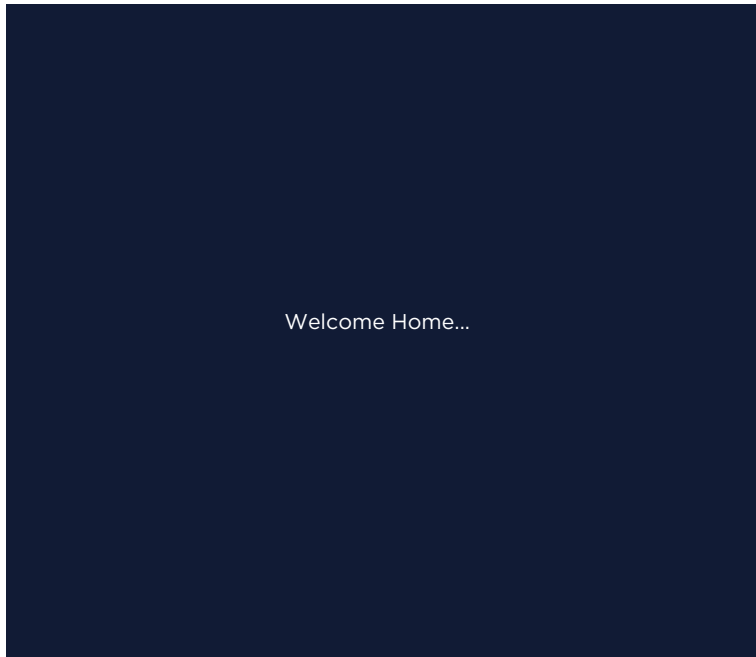
Step inside to a spacious, open-plan living area, seamlessly flowing into a sleek, contemporary kitchen fitted with integrated white goods and ample space for a breakfast bar—perfect for casual dining or entertaining guests.

The generously sized master bedroom offers plenty of space for your furniture, while the second bedroom offers great flexibility and can be used as a guest room or home office. A beautifully appointed bathroom, complete with a shower over the bath, adds a touch of luxury to the property.

Additional highlights include gas central heating for comfort throughout the year, an allocated parking space for convenience, and a Nest smart thermostat that intelligently controls the heating to help reduce energy costs.

Just five minutes from Junction 16 of the M4, this apartment is a commuter's dream, while being a stone's throw from Royal Wootton Bassett's vibrant High Street, offering a variety of supermarkets, eateries, pubs, and a host of local amenities.

Welcome to your new home...

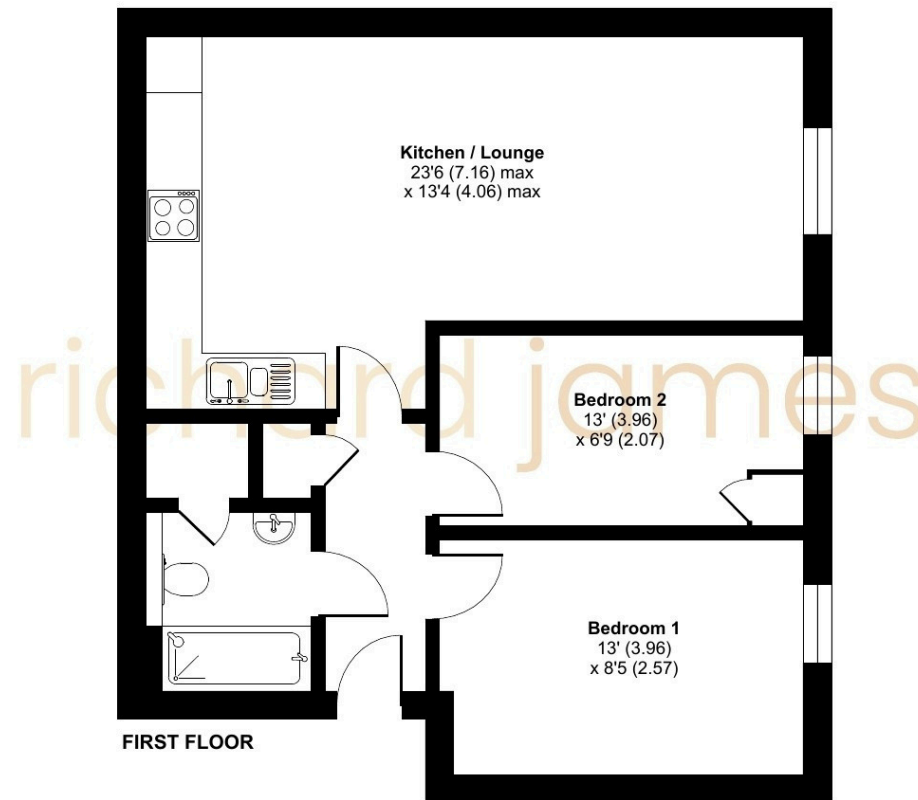




Floorplan

Approximate Area = 581 sq ft / 54 sq m

For identification only - Not to scale



 Floor plan produced in accordance with RICS Property Measurement 2nd Edition, Incorporating International Property Measurement Standards (IPMS2 Residential). © nitchcom 2024. Produced for Richard James Estate Agents Ltd. REF: 1335035

01793 855 117

rwb@richardjames.uk

139 High Street | Royal Wootton Bassett | SN4 7AY

richard james

richardjames.uk