



Off Bocking Hill, Stocksbridge, Sheffield, S36 2AL



**Price £479,995**

Representing the epitome of modern family living, The Carbrook offers a perfect blend of practicality and elegance. With four bedrooms, two bathrooms, and an open-plan living area with bi-fold doors to the garden, this home embodies contemporary living at its finest. An integral garage with utility space adds the finishing touch to this fantastic home. Take advantage of the opportunity to make The Carbrook your forever home.

Willow Heights is a brand new development of just 14 executive detached homes brought to you by Woodall Homes. Nestled amongst the picturesque landscape of Stocksbridge, North of Sheffield City Centre, this bespoke development harmoniously blends the natural beauty of the area, with each home constructed from local stone to create timeless architecture that lasts.

All homes at Willow Heights have been crafted with care ensuring each house embodies the essence of contemporary living and boasts an abundance of space and comfort. Finished to the highest standard throughout, homes at Willow Heights are welcoming and bright with impressive open-plan living areas. From exceptional integrated kitchen diners to generously-proportioned bedrooms, each room has been expertly designed, with a range of fantastic finishes and optional upgrades to choose from (subject to early reservation).

OPEN 7 DAYS A WEEK



## OUTSIDE

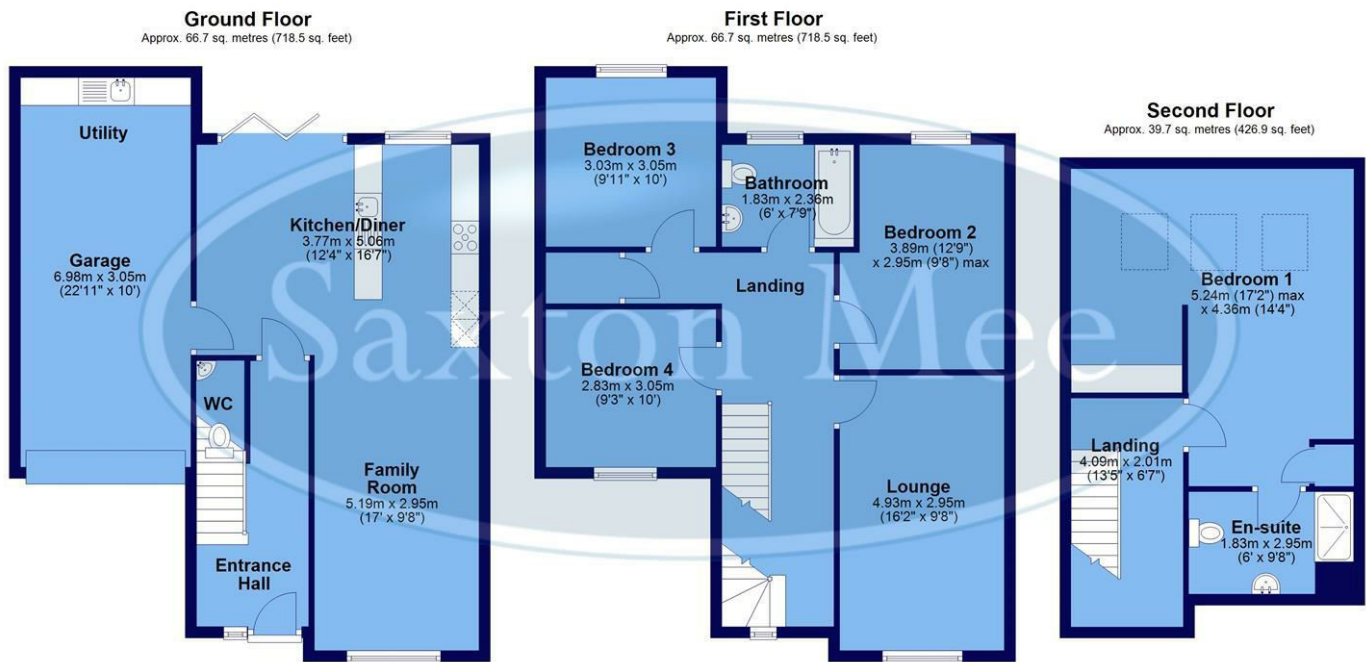
Each property is finished with a beautifully landscaped rear garden, ready for you to enjoy the second you move in. Private and secluded, the garden is an extension to your home with patio or bi-fold doors providing access directly from the dining area. Whether you need a space for children to play or a fabulous entertaining spot - these homes provide everything you could need all in one space, complete with driveway and garage.

## DISCLAIMER

Please note that we have endeavoured to portray a reasonable account of the properties we are advertising. However, images used are for illustrative purpose only. The floor plans are for guidance only and may be subject to change. Properties may be "handed" or mirror images of the plans shown.







Total area: approx. 173.2 sq. metres (1863.9 sq. feet)

All measurements are approximate and to max vertical and horizontal lengths  
Plan produced using PlanUp.

**Crookes**  
**Hillsborough**  
**Stocksbridge**

245 Crookes, Sheffield S10 1TF  
82 Middlewood Road, Sheffield S6 4HA  
462 Manchester Road, Sheffield S36 2DU

T: 0114 266 8365  
T: 0114 231 6055  
T: 0114 287 0112

[www.saxtonmee.co.uk](http://www.saxtonmee.co.uk)

Whilst we endeavour to make our sales particulars fair, accurate and reliable, they are only a general guide to the property. If there is any point which is of particular importance to you, please contact the relevant office. The Agents have not tested any apparatus, equipment, fittings or services and so cannot verify they are in working order. The buyer is advised to obtain verification. All plans, floor plans and maps are for guidance purposes only and are not to scale. Please note all measurements are approximate and should not be relied upon as exact. Under no circumstances should they be relied upon as exact or for use in planning carpets and other such fixtures, fittings or furnishings. YOUR HOME IS AT RISK IF YOU DO NOT KEEP UP REPAYMENTS ON A MORTGAGE OR OTHER LOAN SECURED ON IT.

