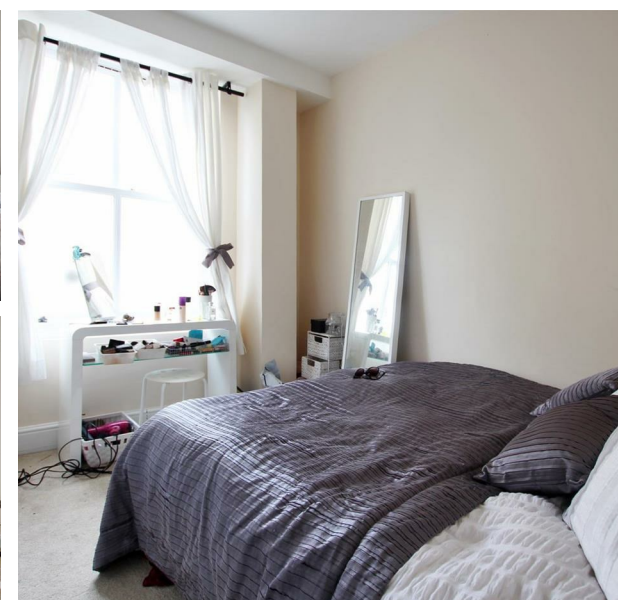
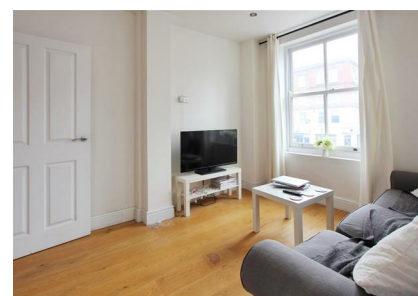


Flat 2, 10, Kings Court Apartments Rope Walk Gardens, London, E1  
1DD  
£2,400 Per month  
Council Tax Band: D



This well presented, modern two bedroom flat comes fully furnished. It is superbly located moments from the City of London. Located on the first floor this property comprises of two double bedrooms, open plan living room / kitchen and bathroom.

This development is moments away from the vibrant Brick Lane and Spitalfields for a wide array of restaurants and nightlife. Transport links are excellent with Aldgate East, Tower Hill and Tower Gateway close by for easy access to the City, West End and Canary Wharf.



Flat 2, 10, Kings Court Apartments Rope Walk Gardens  
London  
E1 1DD  
0208 004 0045  
admin@urbankeys.co.uk  
<https://urbankeys.co.uk/>



Energy Efficiency Rating		
	Current	Potential
Very energy efficient - lower running costs		
(92 plus) A		
(81-91) B	82	82
(69-80) C		
(55-68) D		
(39-54) E		
(21-38) F		
(1-20) G		
Not energy efficient - higher running costs		
England & Wales	EU Directive 2002/91/EC	