

9 Prestwood, Upper Hitch, Watford, WD19 5JB
£1,900 Per month
Council Tax Band: D

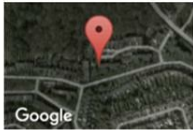


Three bedroom top floor apartment with a garage. Located in this popular quiet close, this spacious apartment spans over 820 square foot with rooms to include entrance hall, living room, fitted kitchen, three bedrooms and bathroom. Large windows and open space create a bright aspect throughout which must be seen to fully be fully appreciated.



9 Prestwood, Upper Hitch
 Watford
 WD19 5JB
 0208 004 0045
 admin@urbankeys.co.uk
 https://urbankeys.co.uk/

**Prestwood,
 Upper Hitch, ...**



Upper Hitch, Watford, United Kingdom WD19 5JB

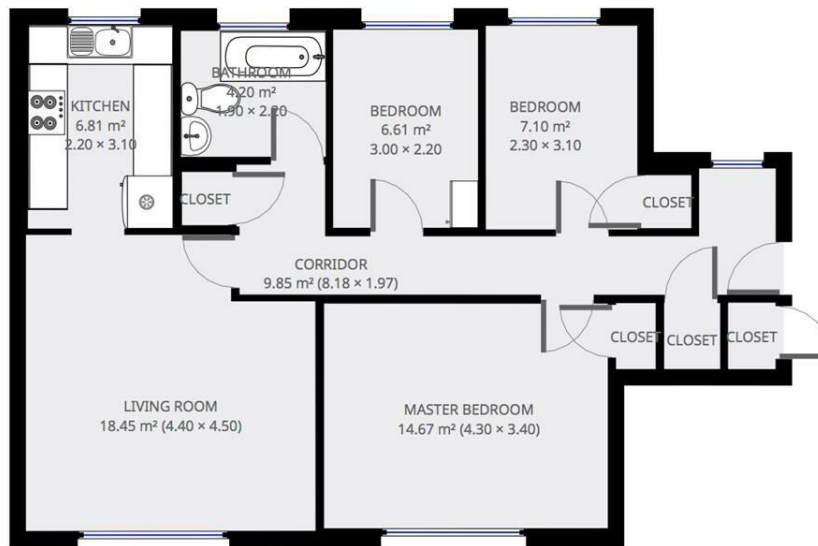


Urban Keys Estate Agents
 admin@urbankeys.co.uk
 0208 004 0045

Statistics

71 m²
 1 Floor
 3 Bedrooms
 1 Bathroom

2nd Floor



THIS FLOOR PLAN IS PROVIDED WITHOUT WARRANTY OF ANY KIND. URBANKEYS DISCLAIMS ANY WARRANTY INCLUDING WITHOUT LIMITATION, SATISFACTORY QUALITY OR ACCURACY OF DIMENSIONS.



Energy Efficiency Rating		
	Current	Potential
Very energy efficient - lower running costs		
(92 plus) A		
(81-91) B		
(69-80) C		
(55-68) D		
(39-54) E		
(21-38) F		
(1-20) G		
Not energy efficient - higher running costs		
England & Wales	67	78
	EU Directive 2002/91/EC	