

Flat 4, Hythe House 1 Green Lanes Walk, London, N4 2GA
Asking price £650,000
Council Tax Band: D



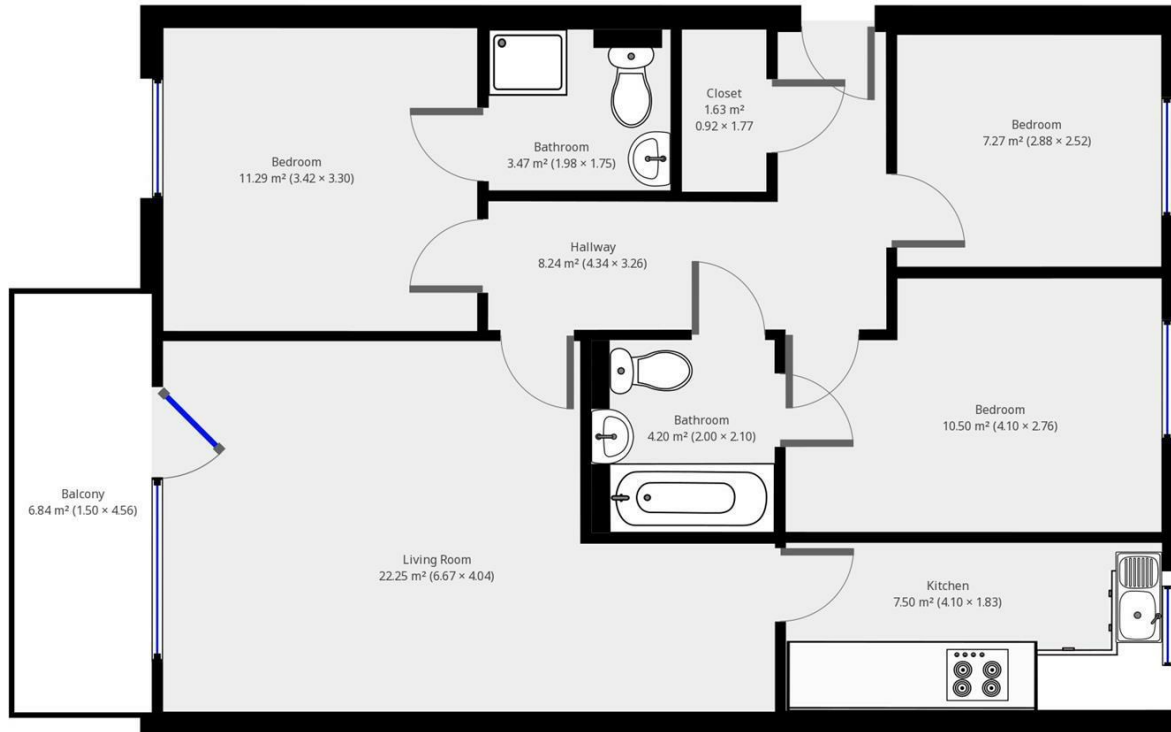
A three bedroom, two bathroom apartment in this recently built development. Located on the first floor with the benefit of a lift and balcony, the apartment measures approximately 850 sq.ft.

Comprising of a spacious living room with access to balcony, modern fitted kitchen, master bedroom with en-suite bathroom, second bedroom with jack and jill bathroom and third double bedroom.

Positioned in an established yet increasingly popular area this apartment would make a wonderful investment or family home.

Hythe House is superbly located in between Finsbury Park, Stoke Newington and Highbury. Positioned on the water's edge with wonderful views and walks available at the Stoke Newington Reservoirs.

Manor House Underground Station (Piccadilly Line) is only a 0.3 miles away which provides easy access to many parts of London for commuters.



Whilst every attempt has been made to ensure accuracy of this floor plan, measurements of doors, windows, rooms are approximate. For identification purpose only. Netto Scale. Copyright to UrbanKeys 2019.



Flat 4, Hythe House 1 Green Lanes Walk
 London
 N4 2GA
 0208 004 0045
 admin@urbankeys.co.uk
 https://urbankeys.co.uk/

Energy Efficiency Rating		Current	Potential
Very energy efficient - lower running costs			
(92 plus) A		89	89
(81-91) B			
(69-80) C			
(55-68) D			
(39-54) E			
(21-38) F			
(1-20) G			
Not energy efficient - higher running costs			
England & Wales		EU Directive 2002/91/EC	