

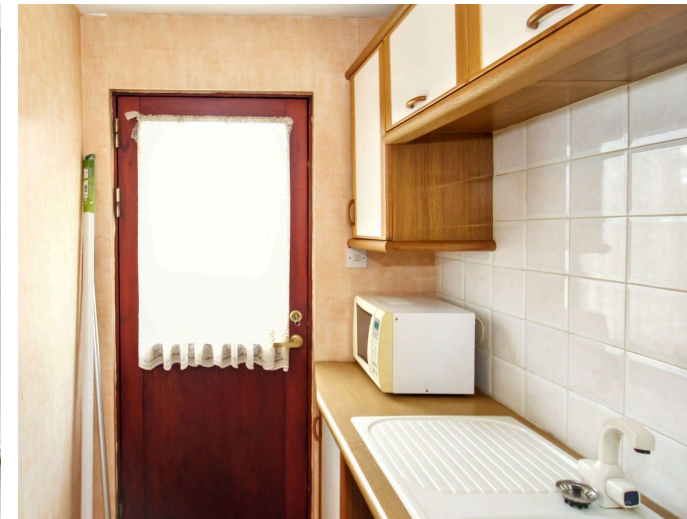
Stevenson Marshall
Property & Law

20 The Latch, Cairneyhill, KY12 8UX

Offers Over £260,000

A modern detached villa in quiet cul-de-sac setting close to good local amenities.

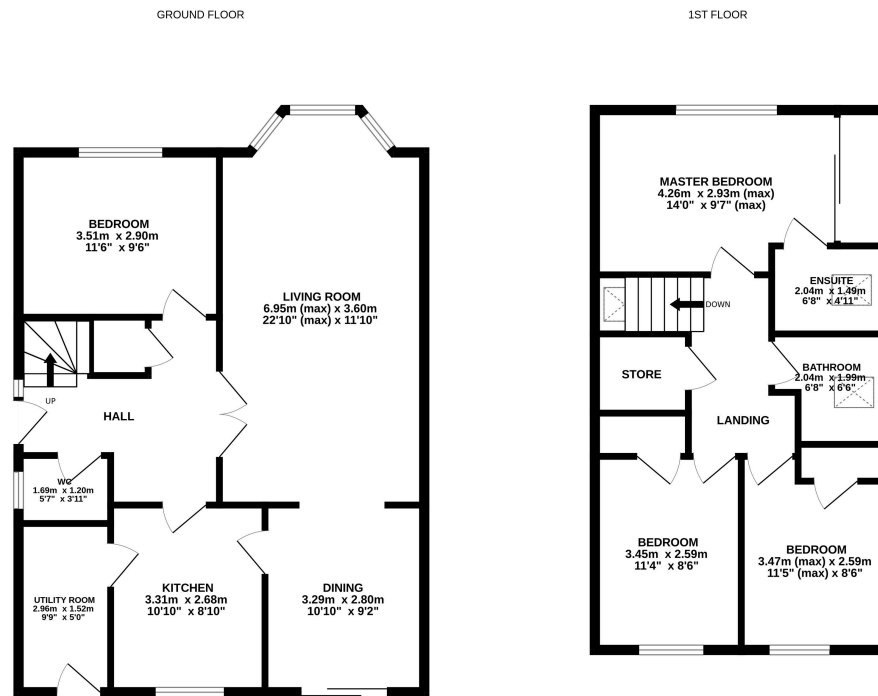
The internal layout comprises, entrance hallway, bay windowed lounge, dining room, kitchen, utility room, WC/cloaks, downstairs bedroom, upper landing, three further bedrooms, master en-suite and bathroom. Gas central heating and double glazed windows are installed throughout. and there is excellent storage and a flexible layout.





The mature garden grounds are mainly laid to lawn with drying facilities provided. There are numerous shrubs, trees, maximum privacy, water tap and a generous patio area. A driveway and detached garage to side offer excellent off street parking for several vehicles.





Cairneyhill is a popular village found only four miles due west of Dunfermline City Centre. It has an excellent reputation with purchasers of all age groups and offers hotels, golf course, well reputed primary school and local shopping. Regular bus services operate connecting with Dunfermline, Stirling and even Glasgow. For commuters Cairneyhill allows easy access to a fast network of roads leading both west and to Edinburgh itself.



Stevenson Marshall
Property & Law

www.stevenson-marshall.co.uk

An appointment to view can be made by contacting selling agents on 01383 721141.

Contact us

41 East Port, Dunfermline, KY12 7LG | Tel: 01383721141

DX DF80 Dunfermline | Email: property@stevenson-marshall.co.uk

Follow us  @Stevenson.Marshall

espc
rightmove

NATIONAL ASSOCIATION
NAEA
ESTATE AGENTS

Whilst every care is taken in the preparation of these particulars, please check all dimensions and floor plan shapes, as these particulars do not form part of any contract and the statements or plans contained herein are not warranted nor to scale. Approximate measurements have been taken by electronic device at the widest point. Services and appliances have not been tested for efficiency or safety and no warranty is given as to their compliance with any Regulations.