

TO LET - OFFICE



Argyle House, Joel Street, Northwood HA6 1NW

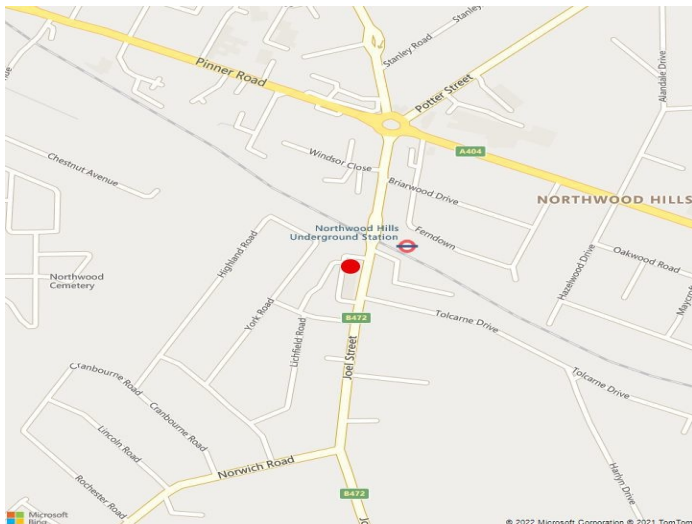
252 - 1,139 Sq Ft (23.41 - 105.81 Sq M)

£20.00 per sq ft

- OFFICE SUITES TO LET
- MODERNISED BUILDING
- EXCELLENT LOCATION
- 24 HOUR ACCESS

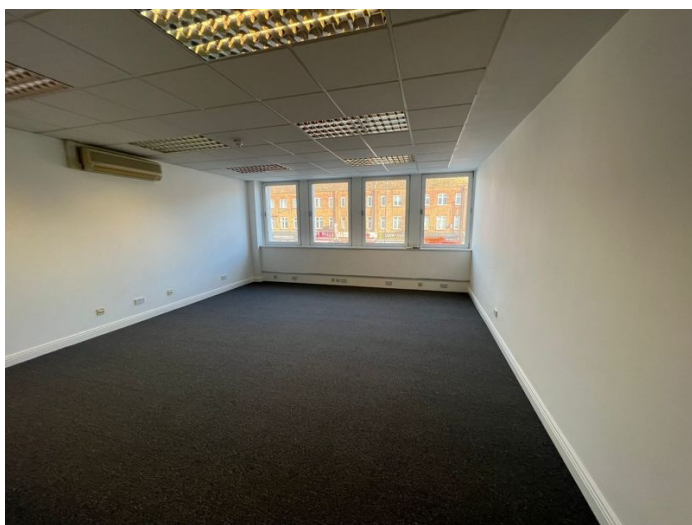
Location

The property is situated opposite Northwood Hills Metropolitan Line Station in a landmark building. Northwood Hills is a densely populated residential area. At ground floor the building comprises shops and a restaurant and forms part of the large Northwood Hills shopping area. Multiple and local shops are represented together with restaurants and bars.



Description

There are various modernised office suites to let. The building has lift access.



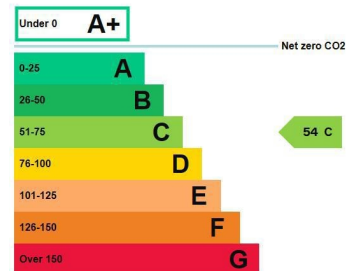
Accommodation

| Accommodation | sq ft | sq m | Rent |
|---------------|-------|--------|--------|
| Suite 1D | 433 | 40.23 | £8,660 |
| Suite 1J | 454 | 42.18 | £9,080 |
| Suite 3F5 | 252 | 23.41 | £5,040 |
| Total Area | 1,139 | 105.81 | |

EPC

An energy performance certificate (EPC) is available upon request. The property has an energy rating of C (54).

This property's energy rating is C.



Properties get a rating from A+ (best) to G (worst) and a score.

The better the rating and score, the lower your property's carbon emissions are likely to be.

Rent

£20.00 per sq ft

Terms

The Suites are available on a new lease for a term to be agreed.

Legal Costs

Each party to bear their own legal costs.

Business Rates

For verification purposes, prospective occupiers are advised to make their own enquiries as to rates payable.

Viewings

Strictly by appointment through VDBM.
steve.keenan@vdbm.co.uk 01923 845226
toby.woodward@vdbm.co.uk 01923 845221

DISCLAIMER

Whilst these particulars are believed to be correct they are not guaranteed by the seller's or landlord's agents "VDBM" and neither does any person have authority to make or give any representation or warranty on their behalf. Prospective buyers or tenants must satisfy themselves by inspection or otherwise as to the correctness of each statement contained in these particulars. All measurements are approximate and the particulars do not constitute, or form any part of any offer or contract.