

Portland Court Wellington Road, New Brighton

Offers In Region Of £85,000 EPC Rating C Council Tax Band A

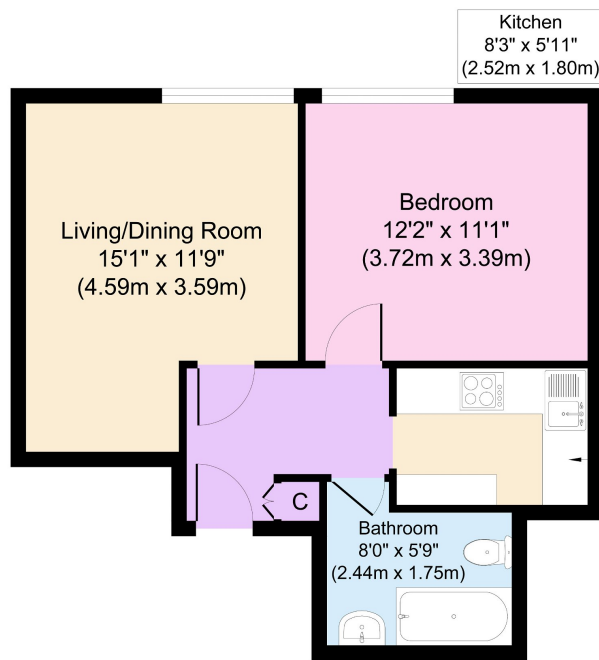
 1  1  1



Being sold with no ongoing chain and set on the second floor of this well sought after purpose built development, this self-contained one bedroom apartment is beautifully presented and much improved throughout. Having that drop in your furniture feel this flat also boasts delightful views of the sea and New Brighton waterfront. Set in a superb location right in the heart of New Brighton; close to a great range of amenities and services including The Light cinema, Morrison's supermarket and post office. Excellent transport links nearby via rail and buses, as well as the M53 motorway and Liverpool tunnel being a short drive away. Note: heating and hot water included with service costs. Cash purchases only due to having a short lease of 53 years remaining.

Key Features

- One Bed Second Floor Apartment
- Sold With No Chain
- EPC Rating C
-
-
-
- Fantastic Sea Views
- Council Tax Band A
-
-
-



Approximate Floor Area
447 sq. ft
(41.50 sq. m)

Copyright V360 Ltd 2023 | www.houseviz.com