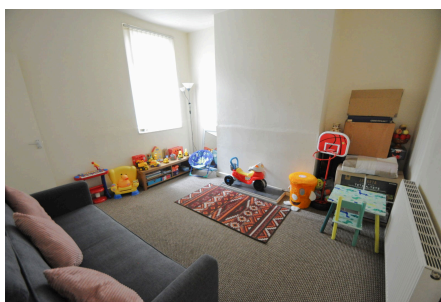


Hartwell Street, Liverpool

£85,000 Council Tax Band A EPC Rating D

2 1 2



Looking for a ready made investment? This well presented two bedroom end terrace home currently has a tenant insitu who really looks after the place and would love to stay, she is paying £475pcm meaning it would make an excellent investment opportunity. Set in a friendly, established neighbourhood, you're just a short walk from local shops, close to local schools and other amenities. Also being great for commuters as its close to Seaforth & Litherland station for direct trains to Liverpool city centre, and excellent road links. Interior: hallway, dining room, living room, and kitchen to the ground floor. Upstairs are two bedrooms and family bathroom. Complete with uPVC double glazing and gas central heating system. Be quick to view!

Key Features

- Two Bed End Terrace Home
- Great Investment
- EPC Rating D
-
-
- uPVC Dbl Glazing and GCH
- Council Tax Band A
-
-
-

