

Windsor Street, New Brighton

£210,000 Council Tax Band A EPC Rating G

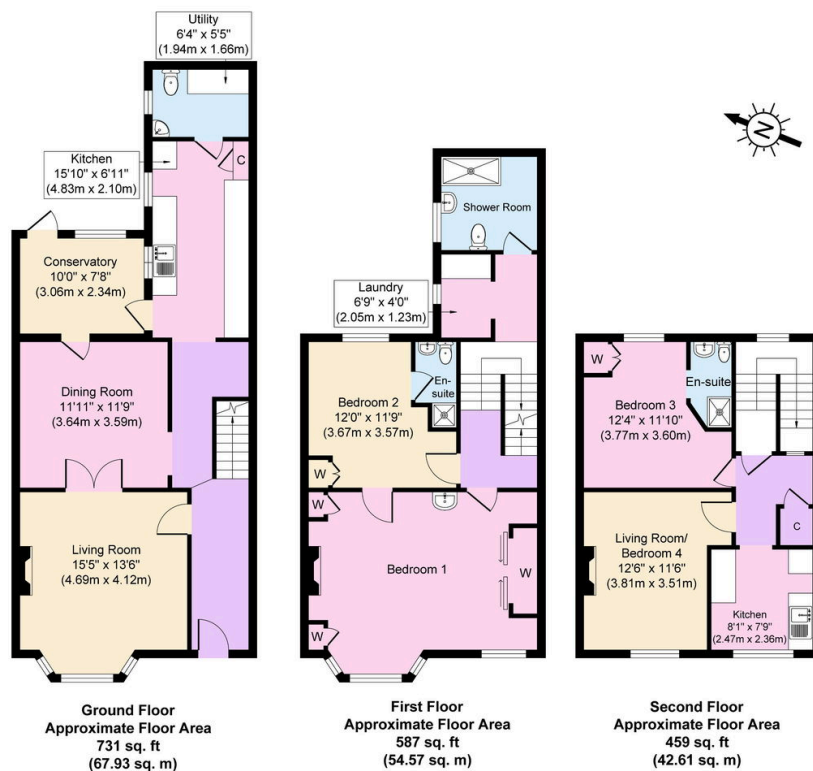
🛏 4 🍳 2 🛋 2



A great investment opportunity especially as it's being sold with no chain! This large mid row home is ideal for a full conversion into flats or even back into a family home. In need of some upgrading but offering so much potential! Situated close to an array of shops, restaurants and public services including supermarkets, post office and all that the Marine Point development offers. Interior: living room, dining room, sun room and kitchen plus utility to the ground floor. To the first floor is a shower room, utility room and two bedrooms, one with ensuite. The second floor is set as a flat with living/bedroom with ensuite and kitchen. Exterior: rear courtyard garden. Complete with uPVC glazing. Viewing is highly recommended!

Key Features

- Large Mid Row Home
- Sold With No Chain
- Great Investment
- Council Tax Band A
- EPC Rating G
-
-
-



Copyright V360 Ltd 2025 | www.houseviz.com