

Sherwood Road, Wallasey

£145,000 Council Tax Band B EPC Rating D

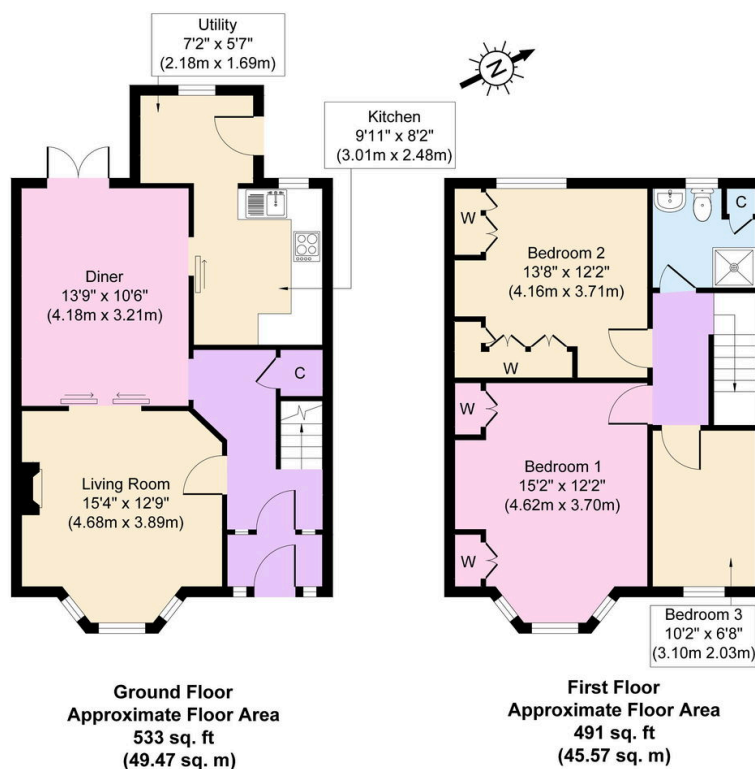
3 1 2



Just a stone's throw from Central Park this three bedroom (with added loft room) mid row home is in need of some upgrading in parts but would make a great family home. Benefitting from a spacious living room that opens into the dining area; plus a utility room and good sized rear garden. Situated not far from the local shops in Poulton and the wider range in Liscard including frequent bus routes, commuter links. Interior: inviting hallway, living room, and dining room opening to the kitchen plus utility on the ground floor. Off the first-floor landing there are the three bedrooms and shower room. Complete with uPVC double glazing and gas central heating system. Exterior: attractive rear garden area and brick built outhouse. Sold with no chain; do not delay in booking a viewing for this superb home!

Key Features

- | | |
|--------------------------|----------------------|
| • Three Bed Mid Row Home | • Sold With No Chain |
| • Utility Room | • Council Tax Band B |
| • EPC Rating D | • |
| • | • |
| • | • |



Copyright V360 Ltd 2024 | www.houseviz.com