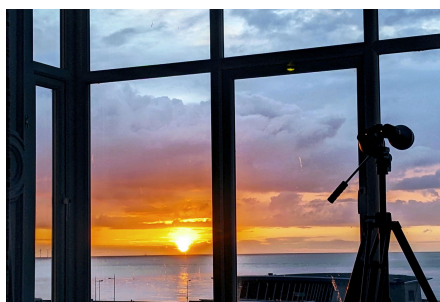


## Wellington Road, New Brighton

£385,000 Council Tax Band B EPC Rating C

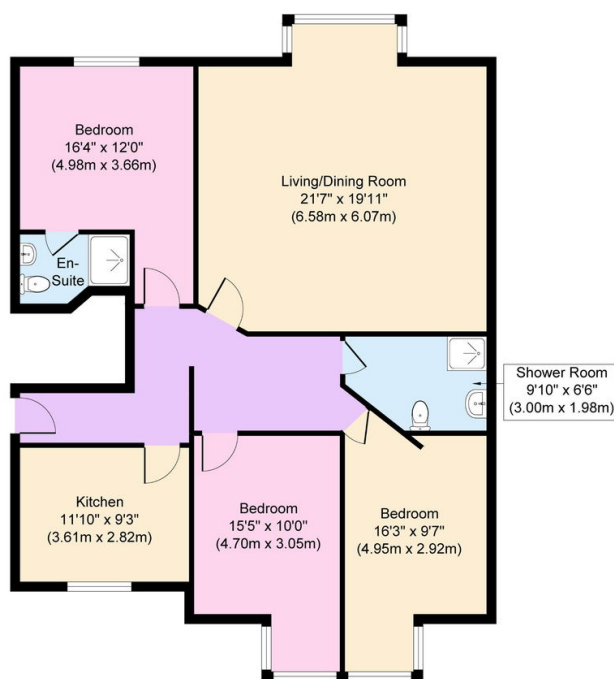
 3  2  2



Wow, what an incredible view! A stylish family home which is an absolute credit to its current owners and one not to be missed. This spectacular three bedroom 1st floor apartment sits within a grade 2 listed building and offers spacious living with stunning original features along with some superb views across the river and towards Liverpool. Just a stroll down to the promenade in New Brighton, this wonderful residence is near to a great range of services and amenities including The Light cinema, Morrison's supermarket and post office. Interior: inner hallway, living/dining room with the fabulous aforementioned views, tastefully designed kitchen, en-suite master bedroom, two further bedrooms and a modern shower room. Exterior: communal garden areas, garage with power and there is also parking available. Be quick!

## Key Features

- Three Bed Apartment
- First Floor Level
- Spectacular Views
- Parking & Garage
- EPC Rating C
- Council Tax Band B
- 
- 



**Approximate Floor Area**  
1,198 sq. ft  
(111.3 sq. m)

Copyright V360 Ltd 2025 | [www.houseviz.com](http://www.houseviz.com)