

## Ladyewood Road, Wallasey

Offers Over £165,000 Council Tax Band B EPC Rating D

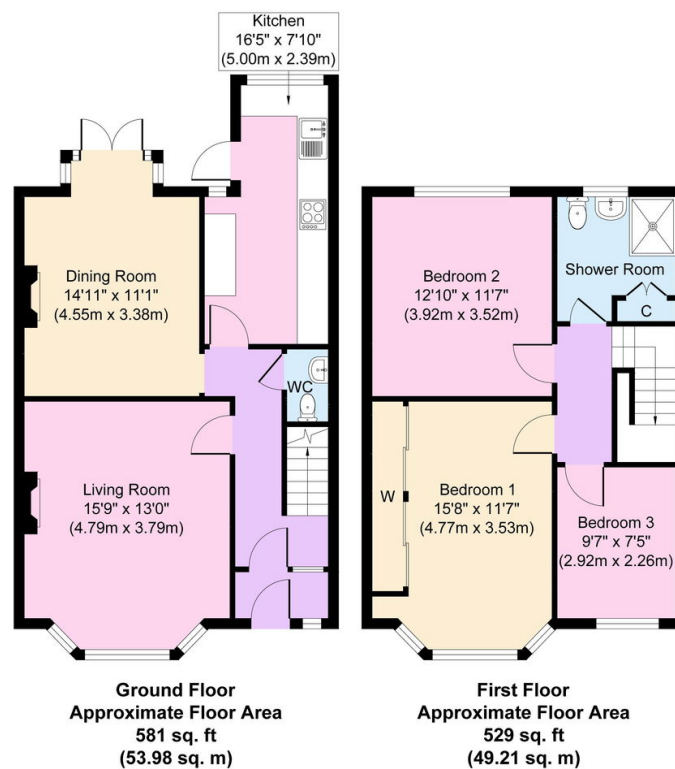
 3  1  2



Just a stone's throw from Central Park this three bedroom mid row home has been beautifully cared for throughout and would make a great family home. Benefitting from a newly fitted modern breakfast kitchen, downstairs WC and a good sized rear garden plus it is being sold with no chain. Situated not far from the local shops in Poulton and the wider range in Liscard including frequent bus routes, commuter links and well placed for good schooling particularly Somerville Primary School. Interior: inviting hallway, living room, dining room and modern fitted kitchen on the ground floor. Off the first-floor landing there are the three bedrooms and shower room. Complete with uPVC double glazing and gas central heating system. Exterior: attractive rear garden area. Sold with no chain; do not delay in booking a viewing for this superb home!

## Key Features

- Three Bed Mid Row Home
- Sold With No Chain
- Refitted Modern Kitchen
- Council Tax Band B
- EPC Rating D
- 
- 
- 



Copyright V360 Ltd 2024 | [www.houseviz.com](http://www.houseviz.com)