

## Royden Road, Upton

£160,000 Council Tax Band A EPC Rating C

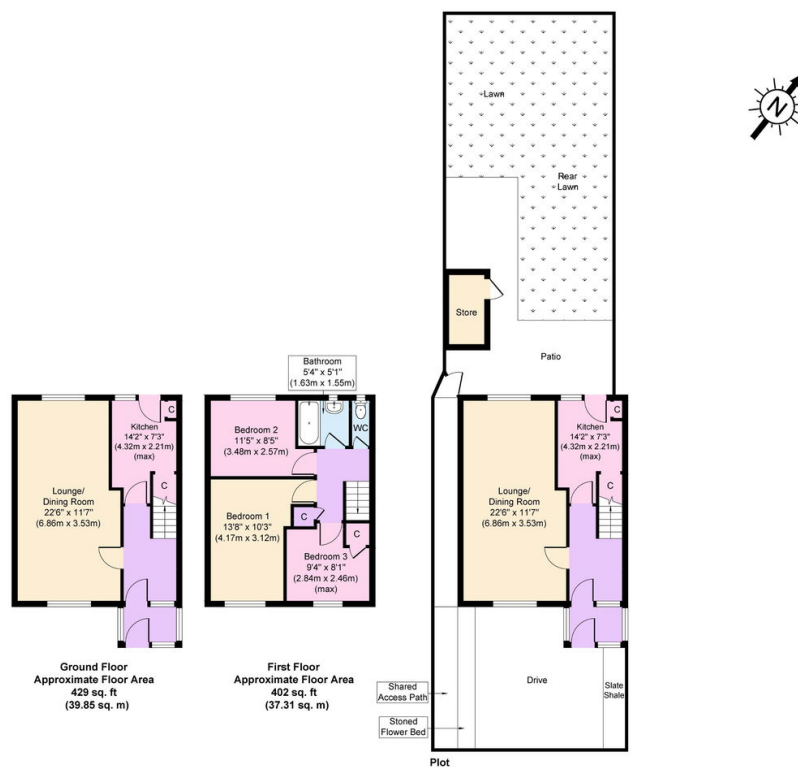
 3  1  2



Simply delightful family home! This three bedroom home is a true credit to the current owners! Boasting a driveway, great sized sunny rear garden and open plan living/dining room; it has all that a family needs and is waiting for you to just move in! Sitting proud in a terrific location near to the services and amenities in Upton Village including local shops and a Sainsbury's supermarket is only a short distance away. Interior: hallway, living room/dining room, and kitchen on the ground floor. Upstairs you will find the three bedrooms, separate WC and bathroom. Complete with uPVC double glazing and gas central heating. Exterior: beautiful rear garden and off road parking. What more could you need? Viewing is an absolute must!

## Key Features

- Three Bed Mid Row Home
- Driveway and Garden
- uPVC Dbl Glazing and GCH
- Council Tax Band A
- EPC Rating C
- 
- 
- 
- 



Copyright V360 Ltd 2025 | [www.houseviz.com](http://www.houseviz.com)