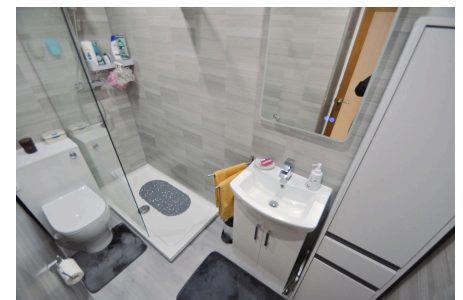


Portland Court , Wellington Road, New Brighton

Offers In Region Of £150,000 Council Tax Band A EPC Rating C

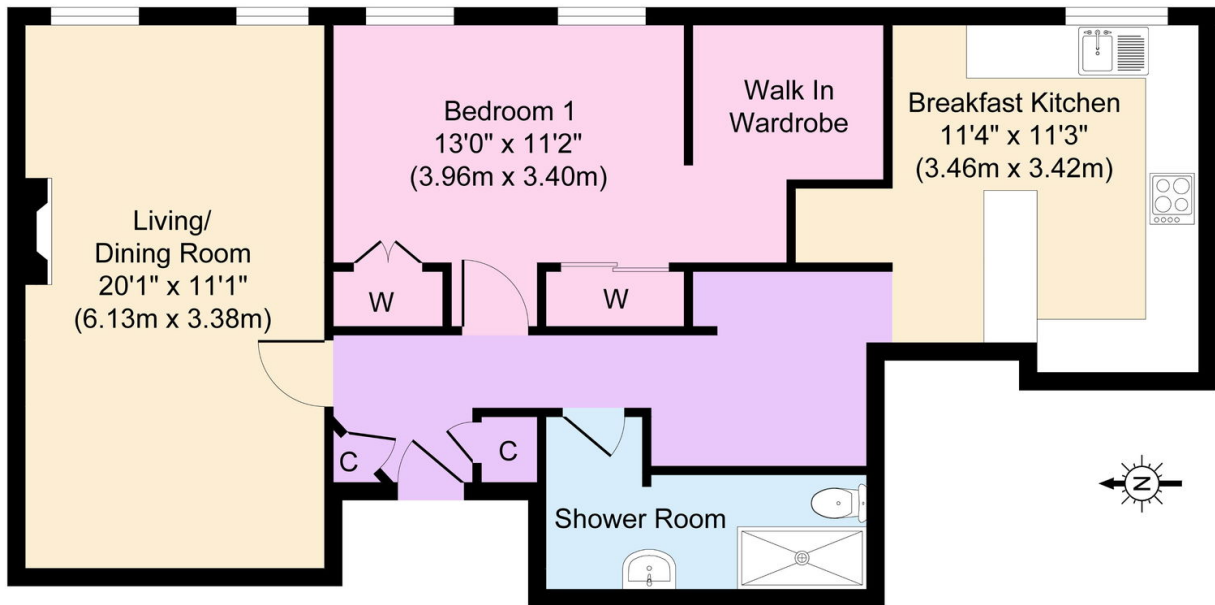
 2  1  1



New 250 year lease included Set on the first floor of this well sought after, purpose built apartment block is this immaculate apartment which has been converted from a two bed with small kitchen into a spacious one bedroom with stunning breakfast kitchen and shower room. Boasting some superb sea views, the apartment has been freshly decorated throughout, and has that drop in your furniture feel. As it is being sold with no chain this apartment would be ideal for someone looking to downsize or get on the property ladder! Set in a great location in the heart of New Brighton close to a great range of amenities and services. Interior: hallway, living/dining area, refitted kitchen, spacious bedroom and modern shower room. Complete with uPVC double glazing and central heating. Exterior: well-maintained communal gardens and parking. Be quick!

Key Features

- Beautiful First Floor One Bed Home
- Stunning Breakfast Kitchen and Bathroom
- Tasteful Decor Throughout
- Council Tax Band A
- EPC Rating C
-
-
-



Approximate Floor Area
761 sq. ft
(70.73 sq. m)

Copyright V360 Ltd 2025 | www.houseviz.com