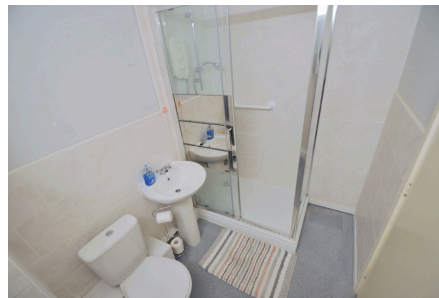


## Montpellier House, Montpellier Crescent

£74,000 Council Tax Band A EPC Rating C

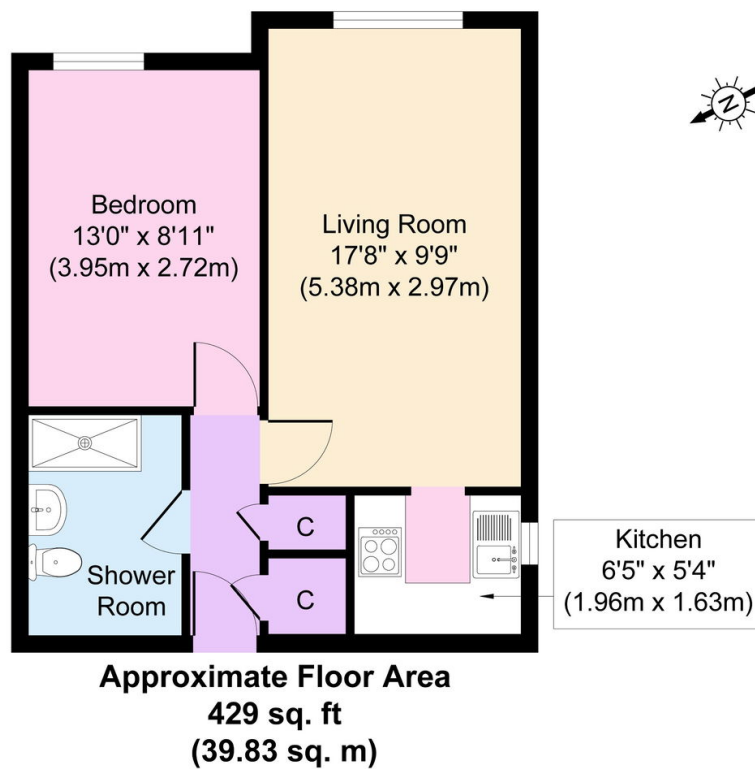
1 1 1



Boasting fantastic views across the sea and towards Liverpool Docks, you can sit and relax watching the ships go by! With a house manager on site this one-bedroom retirement flat for over 60s, is set on the upper ground floor of this much sought after development and has new quality flooring plus modern kitchen and shower room. Interior: secure communal entrance with serviced lifts and stairs giving access to the second floor, private entrance door into the hall/cloaks area with doors to each room; the living/dining room, modern kitchen, bedroom, and shower room. Complete with well cared for communal lounge, laundry room and gardens plus off-road parking. Sold with no chain, this is a must see!

## Key Features

- One Bed Upper Ground Floor Level
- Sold With No Chain
- Communal Parking, Gardens and Laundry Room
- Council Tax Band A
- EPC Rating C
- 
- 
- 



Copyright V360 Ltd 2024 | [www.houseviz.com](http://www.houseviz.com)