


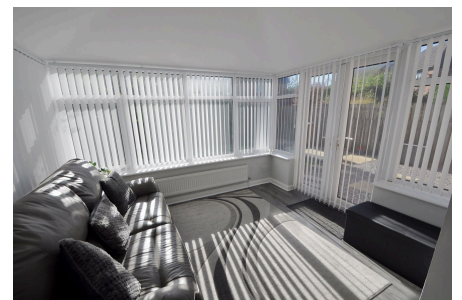


## Epsom Road, Moreton

£350,000 Council Tax Band D EPC Rating C

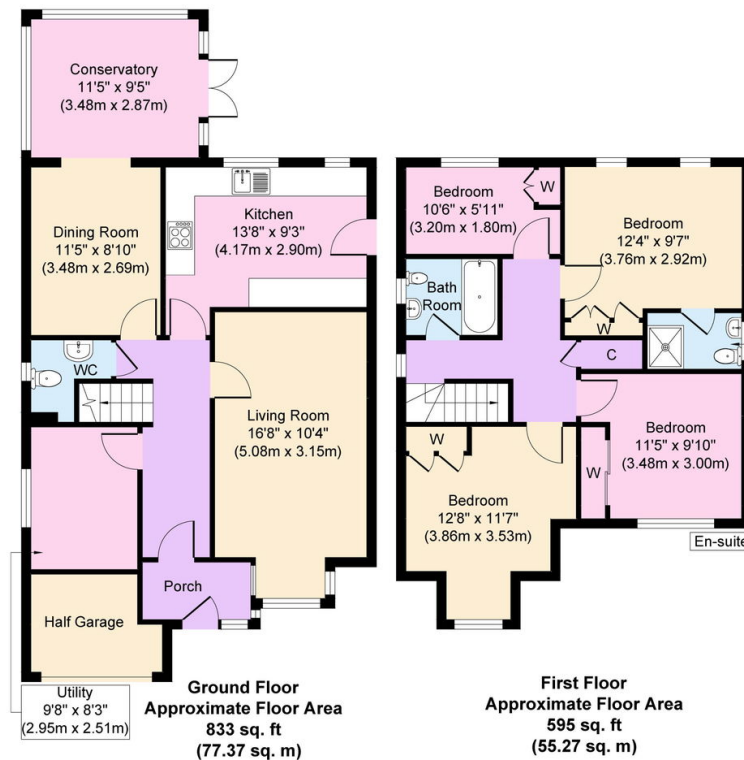
 4  2  3



A stunning transformation! A true credit to its current owners, this immaculately presented and much improved, four-bedroom, two-bathroom, detached residence would make a perfect family home. Being in a prime area near to local amenities and frequent public transport links especially Leasowe train station. Interior: porch, hallway, WC, utility, living room, dining room and stylish new kitchen plus conservatory with new insulated roof on the ground floor. Off the first floor landing there is the en-suite master bedroom, three further bedrooms and family bathroom. Exterior: sunny rear garden, garage for storage and ample parking. Complete with double glazing and gas central heating with new Baxi boiler. This wonderful home is one not to be passed by!

## Key Features

- Four Bed Detached Home
- Two Bathrooms and Utility
- Off Road Parking and Gardens
- Council Tax Band D
- EPC Rating C
- 
- 
- 



Copyright V360 Ltd 2024 | [www.houseviz.com](http://www.houseviz.com)