
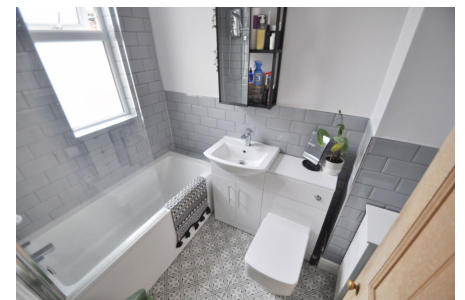


## Grosvenor Road, New Brighton

£225,000 Council Tax Band A EPC Rating D

 4  1  3



What a beautiful family home! This superb four-bedroom mid row home is set across two well planned floors, boasting lots of original features mixed with tasteful modern upgrades including a tastefully refitted kitchen and modern refitted bathroom. Situated in a great location not far from the amenities in New Brighton including Vale Park, the promenade and handy local shops. Interior: welcoming hallway, spacious living room, play room, dining room and tastefully refitted kitchen on the ground floor. Off the spacious landing there are the four bedrooms and refitted bathroom. Complete with uPVC double glazing and gas central heating system. Exterior: sunny South West facing rear garden that enjoys the afternoon and evening sunshine. Be quick not to miss out on this superb home!

## Key Features

- Four Bed Mid Row
- Great Location
- EPC Rating D
- Beautifully Upgraded
- A Must See
- Council Tax Band A



Copyright V360 Ltd 2024 | www.houseviz.com