

St. Elmo Road, Wallasey

£160,000 Council Tax Band A EPC Rating C

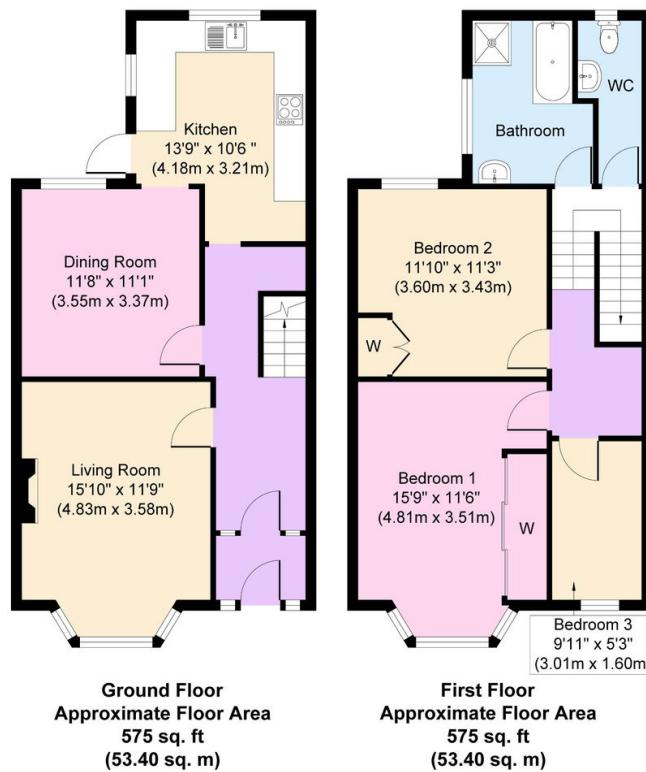
 3  1  2



If you are looking for somewhere to drop in your furniture and start enjoying, then surely this is the place for you! Interior: inviting hallway, living room, dining room and kitchen on the ground floor. Off the first floor landing there are the three bedrooms, with the master offering views towards the new Bramley Moore Everton stadium, and family bathroom with separate WC. Exterior: pleasant sunny rear courtyard garden also there is an inviting front garden. Complete with uPVC double glazing, and gas central heating system plus front and rear insulation. Viewing is highly recommended, be quick to not miss out!

Key Features

- Three Bed End Row Home
- Much Loved Throughout
- EPC Rating C
- uPVC Dbl Glazing and GCH
- Council Tax Band A
-
-
-



Copyright V360 Ltd 2024 | www.houseviz.com