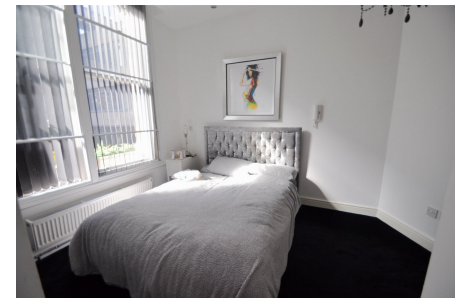


George Street, Liverpool

£165,000 EPC Rating D Council Tax Band D

 2  1  1



If you are looking for City living then this two bedroom, two bathroom, open plan apartment could be just what you are looking for! Set on the higher ground floor of this well sought after Grade II listed building, this delightfully presented and well-kept property sits proud right in the heart of Liverpool City Centre being ideal for someone working or studying close by, or even as a great, hassle free buy to let investment. Interior: communal entrance giving access to apartment, open plan living room/kitchen/dining room, two bedrooms with one having ensuite and a further spacious bathroom. Complete with sash double glazing and gas central heating system. This is one not to miss for sure; viewing is highly recommended and should not be delayed!

Key Features

- Two Bed Higher Ground Floor Apartment
- Open Plan Living
- EPC Rating D
-
-
-
- Grade II Listed Building
- Council Tax Band D
-
-
-

