

Mariners Road, New Brighton

£295,000 Council Tax Band D EPC Rating D

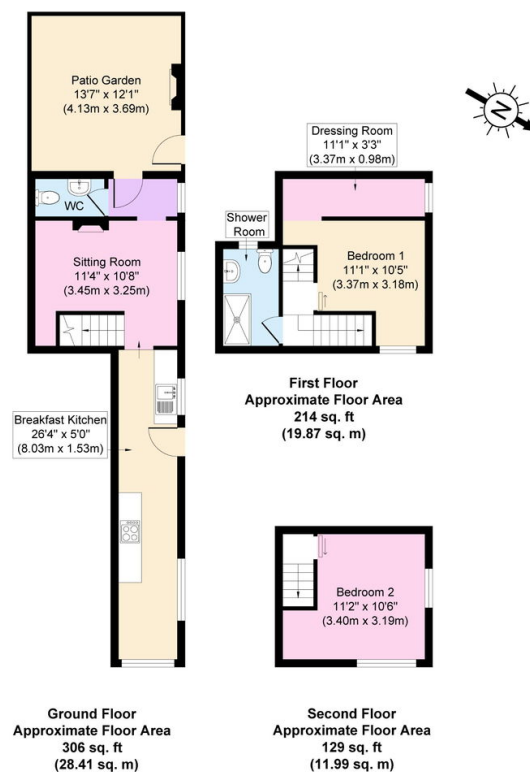
🛏 2 🚿 2 🛋 1



Built in 1864 and steeped in history 'The Boathouse' has been lovingly and beautifully restored, turning it into this truly adorable two-bedroom cottage. Currently being run as a busy 5-star Airbnb with the décor reflecting the coastal theme of New Brighton. This makes this purchase a fantastic investment opportunity for someone, but equally appealing to those who want to settle in their own home just a 1-minute stroll down to the promenade. Sitting on the River Mersey with superb views of the iconic Liverpool waterfront. Set over three floors incorporating a breakfast kitchen, living room, rear hall, two bedrooms, dressing room, shower room and rear 'yarden'. The original features are abundant with tasteful upgrades including uPVC double glazing and central heating. Being sold with no chain, other than the existing bookings.

Key Features

- Council Tax Band D
- EPC Rating D
- A Must See
- Fantastic Location
- Stunning Two Bed Cottage
-
-
-



Copyright V360 Ltd 2024 | www.houseviz.com