

Nant Park Court, New Brighton

£179,995 Council Tax Band A EPC Rating D

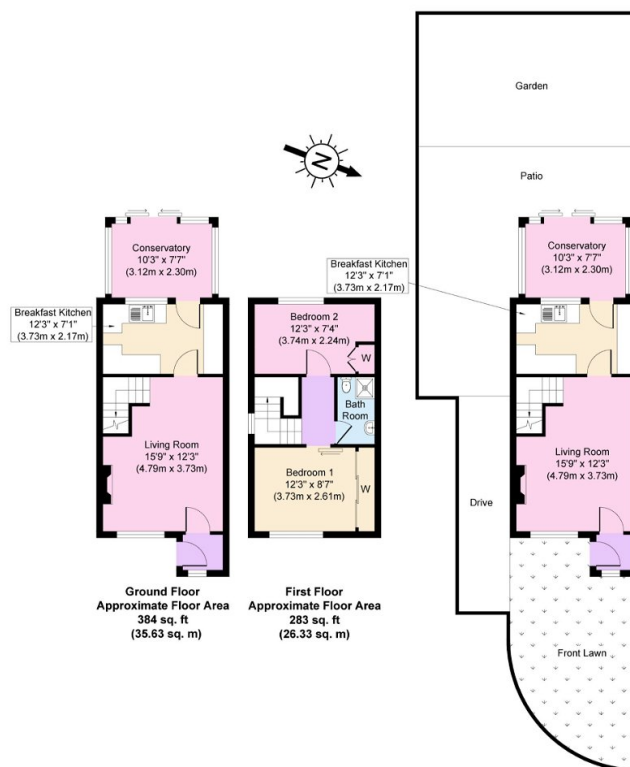
2 1 1



Nestled in a quiet cul-de-sac, just a short walk from the promenade, is this delightful two-bedroom end row residence on a spacious corner plot, offering plenty of benefits such as a lovely garden, a driveway and uPVC double glazing along with gas central heating system. The property is perfect for someone looking to get their foot on the property ladder, to downside or even as a hassle-free buy to let investment. Situated just a short stroll to Vale Park, and well placed for the excellent range of amenities in New Brighton including those at Marine Point and the Victoria Quarter. Interior: vestibule, living/dining area, kitchen and sun room on the ground floor. Off the first-floor landing there are the two bedrooms and shower room. Exterior: lovely sunny garden to the rear and driveway to the front. Be quick not to miss out!

Key Features

- | | |
|----------------------------------|------------------------|
| • Two Bed End Row Home | • Spacious Corner Plot |
| • Sunny Rear Garden and Driveway | • Council Tax Band A |
| • EPC Rating D | • |
| • | • |
| • | • |



Copyright V360 Ltd 2024 | www.houseviz.com