



Westminster Road, Wallasey

£145,000 Council Tax Band A EPC Rating D

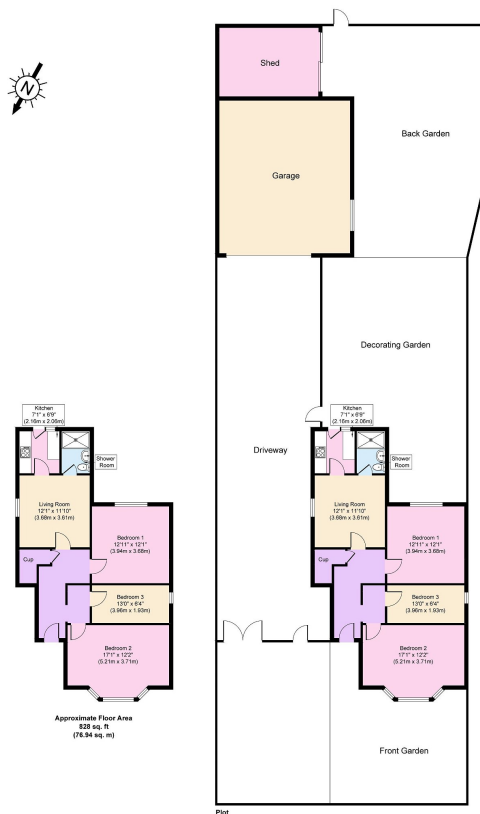
 3  1  1



Beautifully presented and much improved three bedroom ground floor flat with a large rear outdoor area, long side driveway and detached garage. Being sold with no chain it should be of interest to a first time buyer or even as a buy to let investment. Interior: communal entrance, hallway, living room, kitchen, three bedrooms and shower room. Complete with uPVC double glazing and gas central heating system. Exterior: aforementioned good-sized outdoor space with driveway big enough for multiple cars, a garden area set into different sections and a large garage/workshop. Internal inspection is highly recommended.

Key Features

- EPC Rating D
- Council Tax Band A
- Driveway, Garden and Garage
- Sold With No Chain
- Three Bed Ground Floor Flat
-
-
-



Copyright V350 Ltd 2024 | www.houseviz.com