




Portland Court, Wellington Road

Offers In Region Of £240,000 Council Tax Band B EPC Rating C

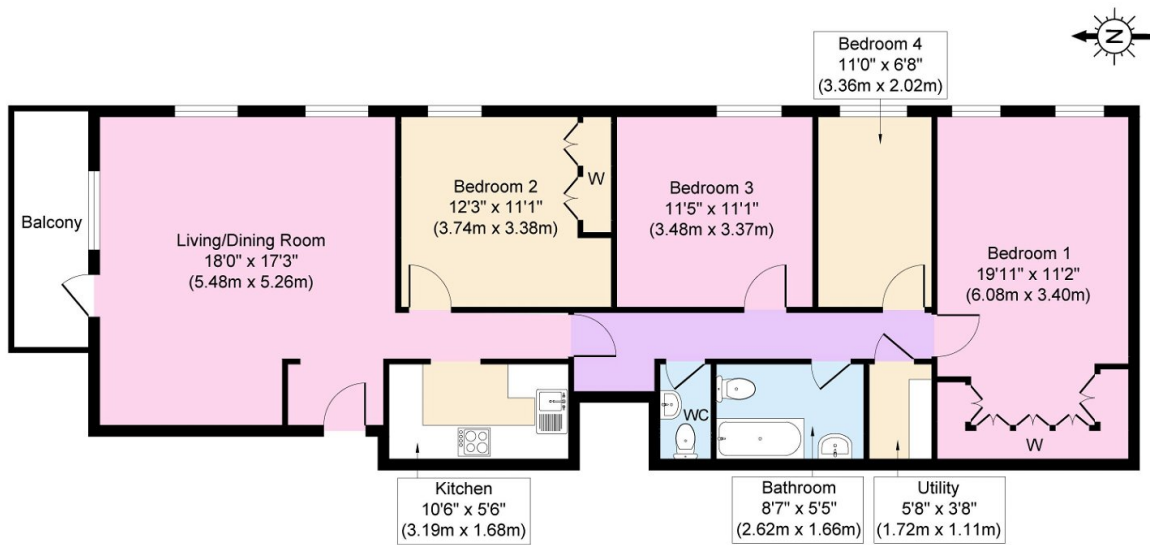
 4  2  2



Stunning and spacious three/four bedroom apartment with breathtaking sea views from the newly installed uPVC windows and the front facing balcony! Set on the second floor of this well sought after purpose built development, this self-contained apartment has been completely transformed by its current owners who have turned it into a place you can drop in your furniture and enjoy for years to come with stylish kitchen, bathroom, WC and utility too. Set in a superb location right in the heart of New Brighton; close to a great range of amenities and services including. Interior: inviting communal entrance, inner hallway, living/dining room, kitchen plus WC and utility room, three/four beds and bathroom. Exterior: well-maintained communal gardens, plus allocated space within the garage. A must see!

Key Features

- Impressive Three/Four Bed Apartment
- Allocated Space in Garage
- EPC Rating C
-
-
-
- Stunning Sea Views
- Council Tax Band B
-
-
-



Approximate Floor Area
1143 sq. ft
(106.21 sq. m)

Copyright V360 Ltd 2024 | www.houseviz.com