





A three-bedroom semi-detached unfurnished cottage which has been impressively interior designed to a high standard throughout in a contemporary style, whilst maintaining the character of a countryside cottage with a gated driveway.

A three-bedroom semi-detached unfurnished cottage which has been impressively interior designed to a high standard throughout in a contemporary style, whilst maintaining the character of a countryside cottage with a gated driveway.

The front reception is a cosy area with a log burner and the extended rear of the property provides a kitchen – with fitted appliances and a large living area with its own multi-directional log burner, skylights and lots of space to enjoy and relax in this beautiful home. This area opens out via bi-folding doors into the stunning garden which even has a fully installed BBQ.

In addition, there is a separate guest house at the end of the garden with a sleeping area, kitchen and wet room.

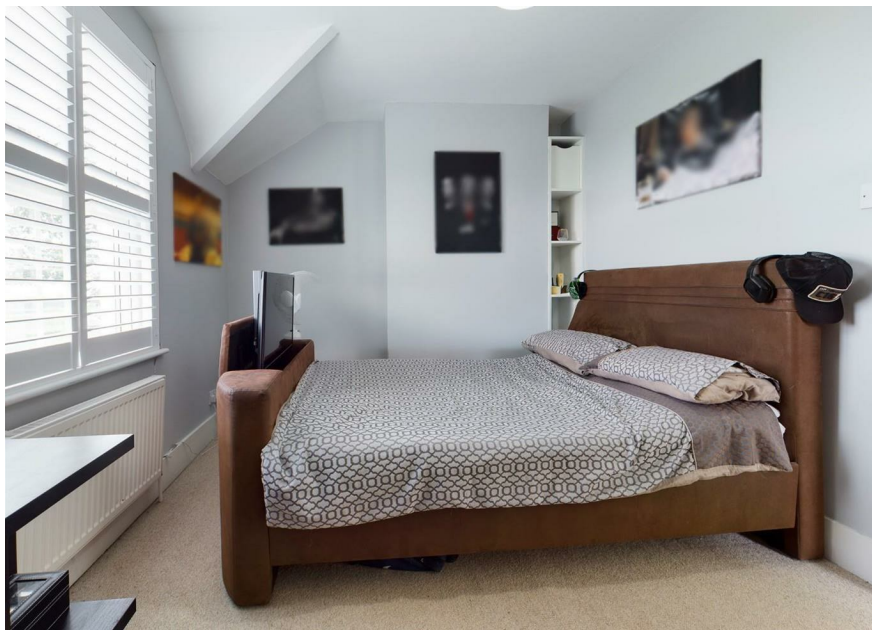
We believe this cottage is a rare find in today's lettings market and we recommend a viewing asap. Surrounded by fields, yet with excellent links to M2 and A2 as well as access to Strood Station taking you to London St Pancras in just 40 minutes. there are also a variety of Comprehensive, Primary and Private schools nearby as well as Bluewater only approx. 15 minutes' drive away. This stunning home offers the best of both worlds to any family or couple looking to enjoy the high life.

The guest house is included in the tenancy but is not to be permanently occupied.

Contact our friendly letting team to arrange a viewing on 01634 294864

Price: £1850PCM
Holding Deposit £426.92
Deposit: £2,134.62
Length of the tenancy: 6 months
EPC: D
Council tax band: D





- Semi detached three bedroom cottage
- Large contemporary kitchen and living space
- Log burners in both living spaces
- Built in bbq in rear garden
- EPC: D



THE AGENT ON THE QUAYS

Company Reg Number: 08789210 - Registered Office: 12, Station Court, Station Approach, Wickford, Essex, SS11 7AT

