





Stunning Mid-Terrace Home on St. Mary's Island

Located in the heart of sought-after St. Mary's Island, this immaculate mid-terrace property is arranged over three generous floors and offers ample space throughout ideal for modern family living.

Step inside to a sleek and spacious hallway on the ground floor, leading to a large contemporary kitchen, a convenient downstairs WC, and plenty of room to welcome guests.

The first floor boasts a bright and expansive living area with direct access to a private balcony overlooking the lush green perfect for relaxing or entertaining well as a generously sized bedroom.

Upstairs on the second floor, you'll find two further bedrooms, including a master with en-suite, alongside a stylish family bathroom.

One of the standout features is the large balcony to the front of the home, offering stunning views across open green.

Perfectly positioned just a short walk from the local school, this is one of the most spectacular mid-terrace homes on the island—right in the centre of it all.

Tenure - Freehold
EPC Rating - C
Council Tax Band - E



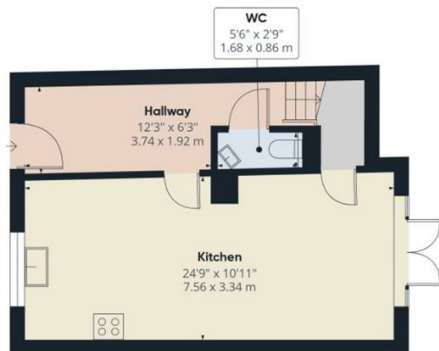


- Carport To The Rear
- Quiet Location With Spectacular Views
- Close Walk to Schools
- Immaculately Presented
- Fully Integrated Kitchen
- Sunny Aspect Garden
- Easily Commutable to London
- 3 Stations Close Buy For Highspeed Links
- Shopping Centre Near By

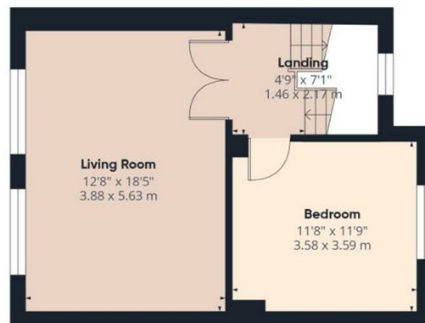


THE AGENT ON THE QUAYS

Company Reg Number: 08789210 - Registered Office: 12, Station Court, Station Approach, Wickford, Essex, SS11 7AT



Ground Floor



Floor 1



Floor 2

Approximate total area¹⁾
1197 ft²
111.1 m²

(1) Excluding balconies and terraces

While every attempt has been made to ensure accuracy, all measurements are approximate, not to scale. This floor plan is for illustrative purposes only.

Calculations are based on RICS IPMS 3C standard.

GIRAFFE360

