





****Beautifully Maintained One-Bedroom Apartment with Waterfront Views – Azure, Countryside Maritime****

Located in the prestigious Azure development by Countryside Maritime, this bright and airy one-bedroom apartment offers modern waterside living at its finest, with stunning views across the Marina and Dock 9.

The highlight of the home is the generous open-plan living area thoughtfully designed to maximize light and space. It features a fully fitted luxury kitchen with high-quality integrated appliances, seamlessly flowing into the living and dining area. Double doors open onto a spacious west-facing balcony—ideal for enjoying sunsets and uninterrupted waterfront views.

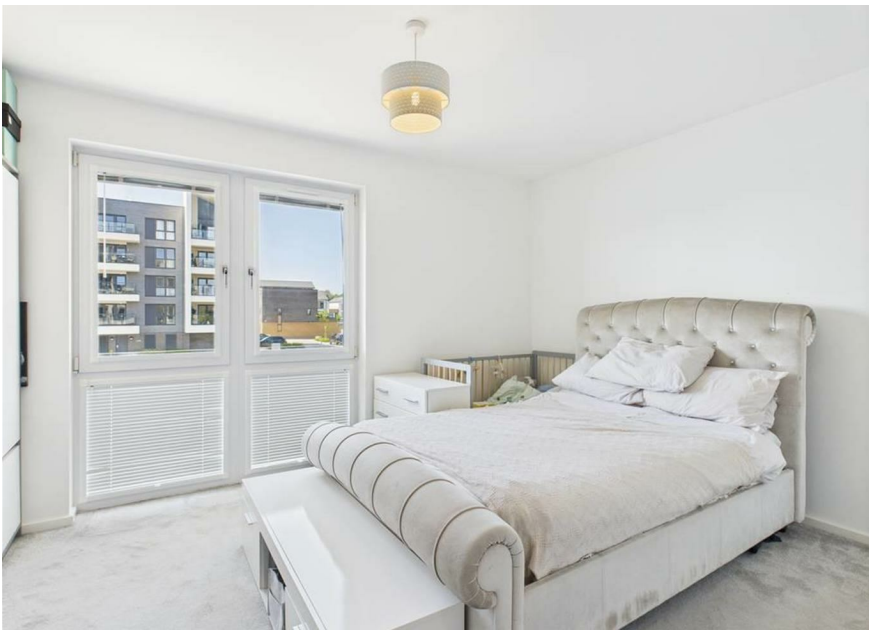
The well-appointed bedroom includes sleek mirrored fitted wardrobes and shares the same west-facing aspect, ensuring peaceful, light-filled mornings. The bathroom is finished to an exceptional standard and unusually benefits from both a full-sized bath and a separate double shower.

This is a rare opportunity to secure a home in one of the area's most sought-after waterside developments.

****Please contact us to register your interest and be kept informed of similar properties as they become available.****

Tenure - Leasehold
 EPC Rating - B
 Council Tax Band - C
 Service Charge -£1,315.14 per annum
 Ground Rent -£250 per annum
 Lease remaining - TBC





- Immaculately Presented
 - Spectacular Views Over The Large Balcony
 - Azure Development
 - Allocated Parking Space
 - Open Plan Living
 - Fully Integrated Kitchen
 - Sleek And Modern Bathroom
- Viewings Are Available Immediately.



THE AGENT ON THE QUAYS

Company Reg Number: 08789210 - Registered Office: 12, Station Court, Station Approach, Wickford, Essex, SS11 7AT



Approximate total area⁽¹⁾
563 ft²
52.3 m²

(1) Excluding balconies and terraces

While every attempt has been made to ensure accuracy, all measurements are approximate, not to scale. This floor plan is for illustrative purposes only.

Calculations are based on RICS IPMS 3C standard.

GIRAFFE360

