





* Chain Free * - Spacious 4 Bedroom Townhouse on St. Mary's Island, Chatham Maritime. Offered chain free, this spacious and well-presented four-bedroom townhouse is set in a quiet cul-de-sac on the highly desirable St. Mary's Island.

Offered chain free, this spacious and well-presented four-bedroom townhouse is set in a quiet cul-de-sac on the highly desirable St. Mary's Island. With flexible living accommodation arranged over three floors, this is one of the largest townhouse designs built on the Island—perfect for families or buyers seeking generous space and a peaceful setting.

The ground floor features a striking kitchen/breakfast room, fitted with sleek units, integrated appliance. The Double doors lead directly onto a large conservatory overlooking the low-maintenance rear garden, ideal for entertaining or relaxing. A separate dining room to the front of the home offers further versatility, alongside a downstairs cloakroom/WC.

On the first floor, you'll find a bright and airy south-facing living room and a large double bedroom and ample storage (with en suite bathroom—offering potential to use as a master suite or a comfortable guest bedroom).

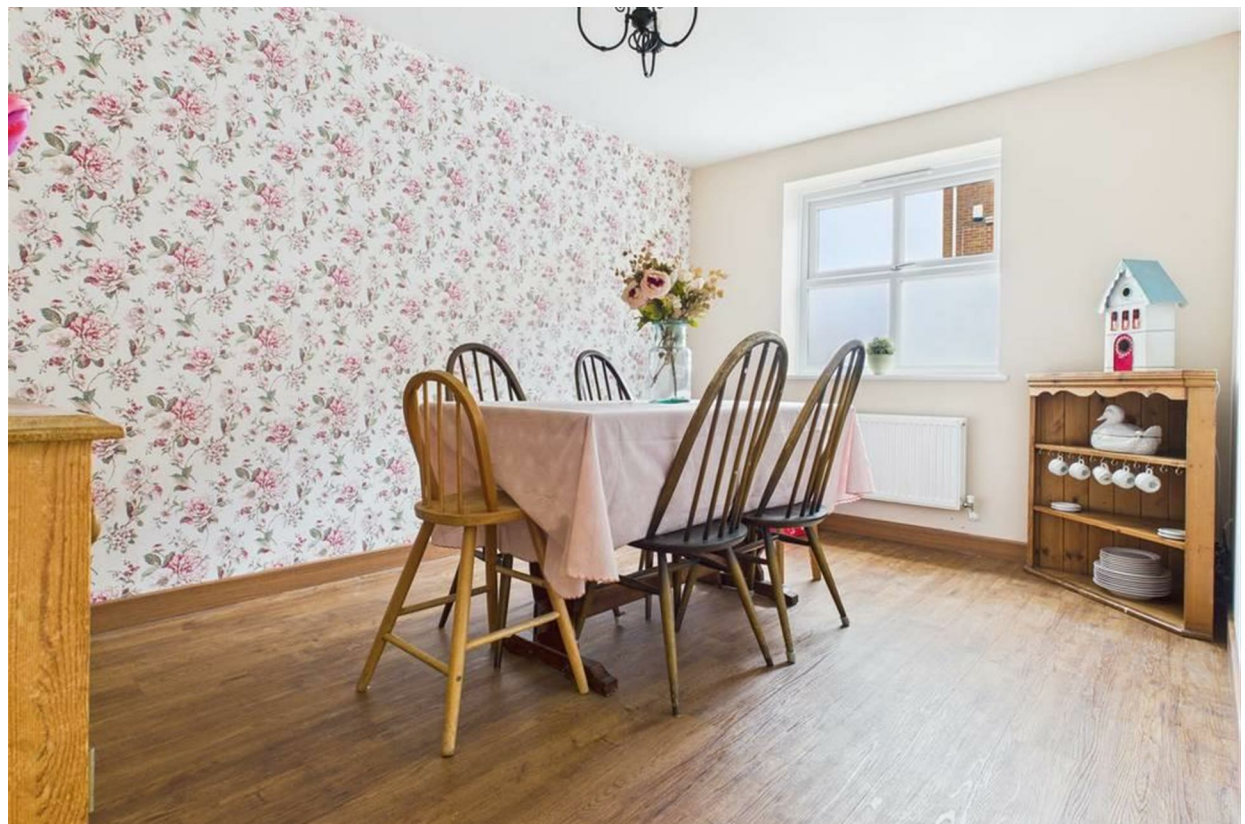
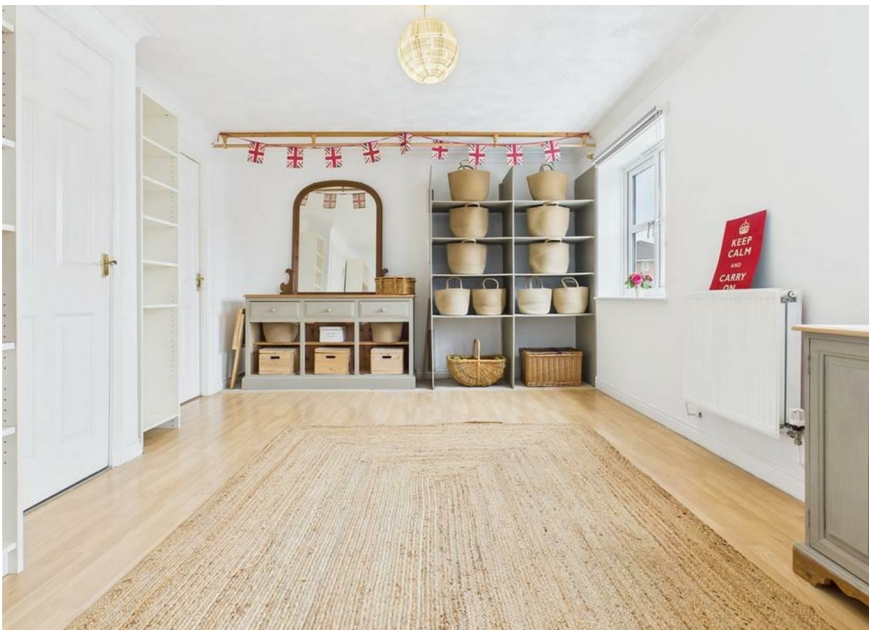
The top floor houses the main master bedroom with walk-in wardrobe and en suite shower room, along with two further bedrooms and a modern family bathroom.

Outside, the rear garden has been landscaped with artificial grass for easy upkeep and includes a patio area. The garage to the rear has been well kept and spacious, while still offering storage for bikes or tools. There's also a dedicated parking space directly beside the garage.

Located on a peaceful residential street, yet within easy reach of local amenities, green spaces, schools, and transport links, this is a rare opportunity to secure a sizeable family home in a fantastic location—with no onward chain.

Tenure - Freehold
Council tax band - F
EPC Rating- C





- Chain Free Sale
- One of the Largest Townhouse Designs on the Island
- Quiet Cul-de-Sac Location
- Four Bedrooms, Two with En Suites
- Large Modern Kitchen/Breakfast Room with Integrated Appliances
- Private Rear Garden with Patio and Artificial Lawn
- Garage + Additional Car port



THE AGENT ON THE QUAYS

Company Reg Number: 08789210 - Registered Office: 12, Station Court, Station Approach, Wickford, Essex, SS11 7AT

