





This one-bedroom chain free house is a rarity to the market, perfect for first time buyers and investors alike. your welcomed by a fair sized porch,ideal for storing coats, bags, and shoes.

This one-bedroom chain free house is a rarity to the market, perfect for first time buyers and investors alike. your welcomed by a fair sized porch,ideal for storing coats, bags, and shoes.

Off from the porch is the lounge, which comfortably accommodates a sofa, and dining table .leading off from the lounge is a well presented kitchen with ample storage. upstairs has a large bedroom and bathroom with a bath-shower.

The property does come with an allocated parking space and separate garden area.

Tenure - Freehold

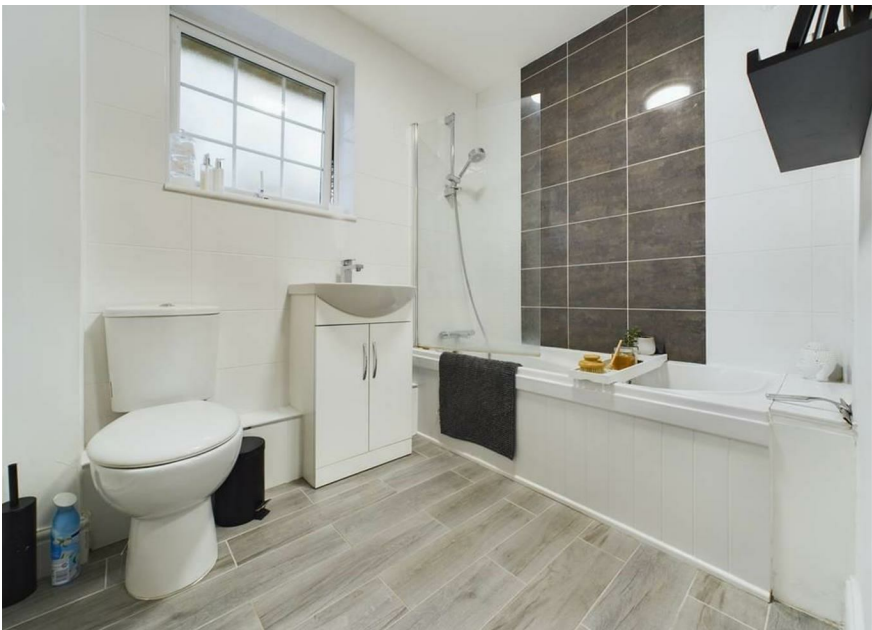
EPC Grade - C

Council Tax Band - B

The information we hold for this property is obtained from the Vendor (the person or company selling the property). Anyone interested in this property is advised to obtain verification on all points from their Solicitor or Surveyor. Reference to the Tenure of this property is based on information supplied by the Vendor. Any Buyer(s) is/are advised to obtain verification from their Solicitor. We have not tested any apparatus, equipment, fixtures and fittings and so cannot verify that they are in working order or fit for purpose. Please do not rely on this information when deciding to proceed

Dockside are members of The Property Ombudsman & our Client Money Protection provider is Propertymark.



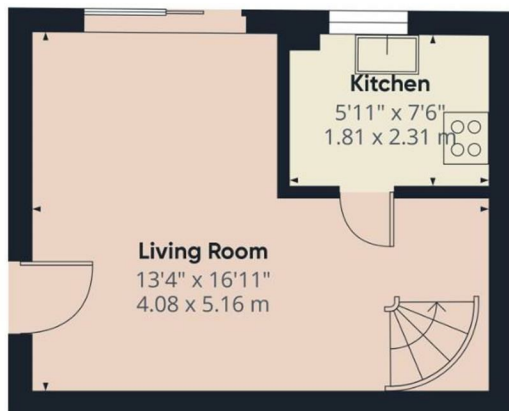


- Allocated parking space
- Separate garden
- Prime location
- Recently renovated
- Large Bedroom
- Perfect First Time Buy
- Chain free

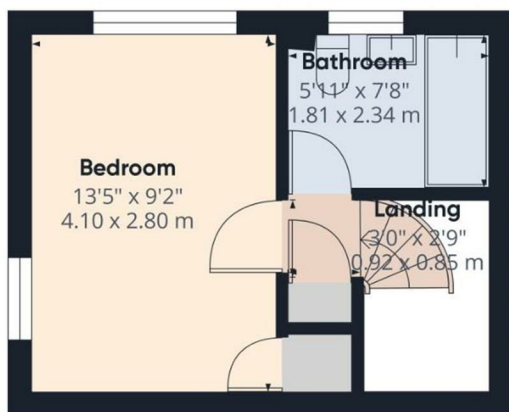


THE AGENT ON THE QUAYS

Company Reg Number: 08789210 - Registered Office: 12, Station Court, Station Approach, Wickford, Essex, SS11 7AT



Ground Floor



Floor 1

Approximate total area⁽¹⁾

450.58 ft²
41.86 m²

Reduced headroom

27.1 ft²
2.52 m²

(1) Excluding balconies and terraces

Reduced headroom

Below 5 ft/1.5 m

While every attempt has been made to ensure accuracy, all measurements are approximate, not to scale. This floor plan is for illustrative purposes only.

Calculations are based on RICS IPMS 3C standard.

GIRAFFE 360

