





Stunning Three Bedroom 2nd Floor Ex Show Apartment situated at the new Countryside Azur development at St.Mary's island. Large garage and off street parking, terrace and additional south facing balcony.

A three bedroom apartment on the new Countryside Azure 'The Docks' development on the highly desirable St Mary's Island, with open aspect views towards the quayside at Dock 9.

These apartments rarely return to market and this currently represents a unique opportunity to acquire a 1041 sq.ft three bedroom apartment with balcony, sun terrace, en suite to master bedroom and double length garage with off street parking.

Fitted to a high standard this second floor ex show apartment offers luxury modern living with both high quality kitchen and bathrooms. The generous 14'11 x 11'9 individually designed contemporary style Commodore kitchen has Star Gloss handleless wall units and Moon Light Grey base units with Lamberata laminate worktops. There is an integrated fridge freezer, dishwasher, washer/dryer and single oven with electric ceramic hob. Accessed from the kitchen is a 5m.sq. south facing sun terrace.

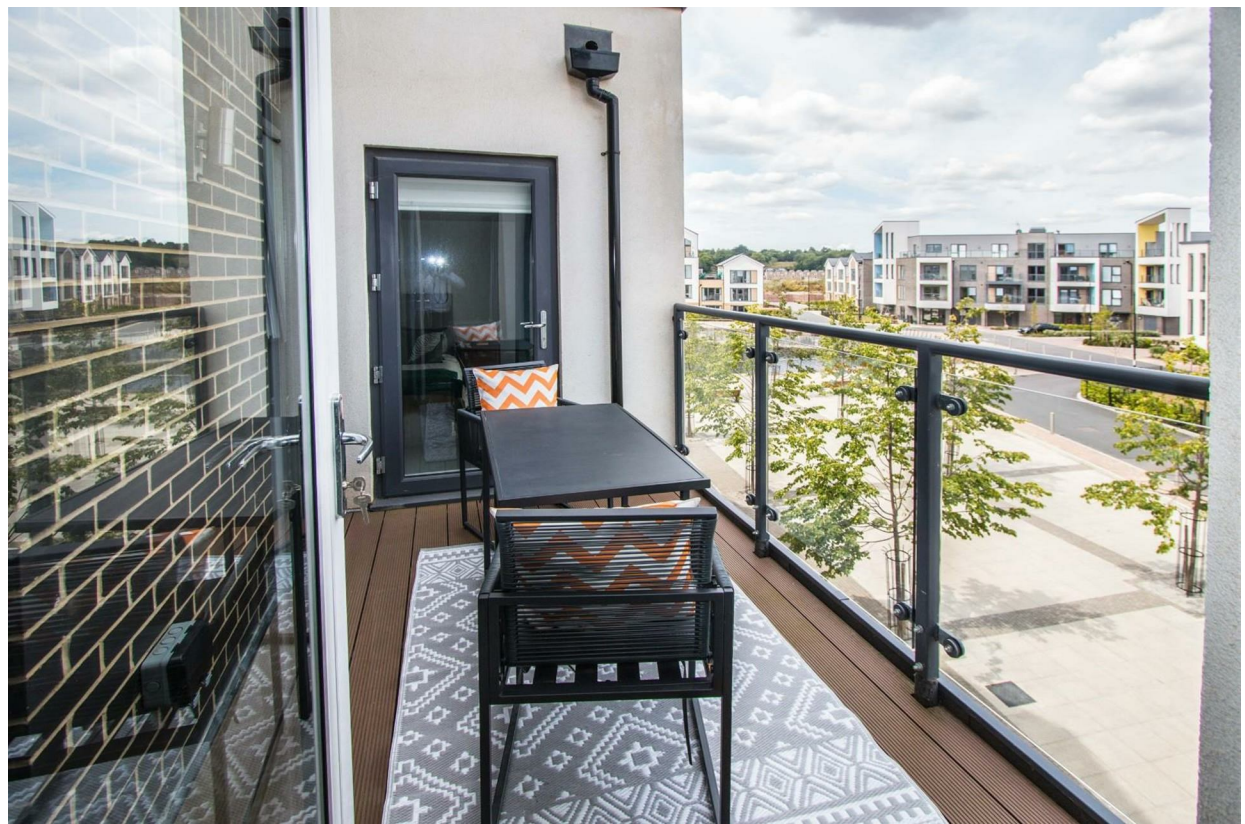
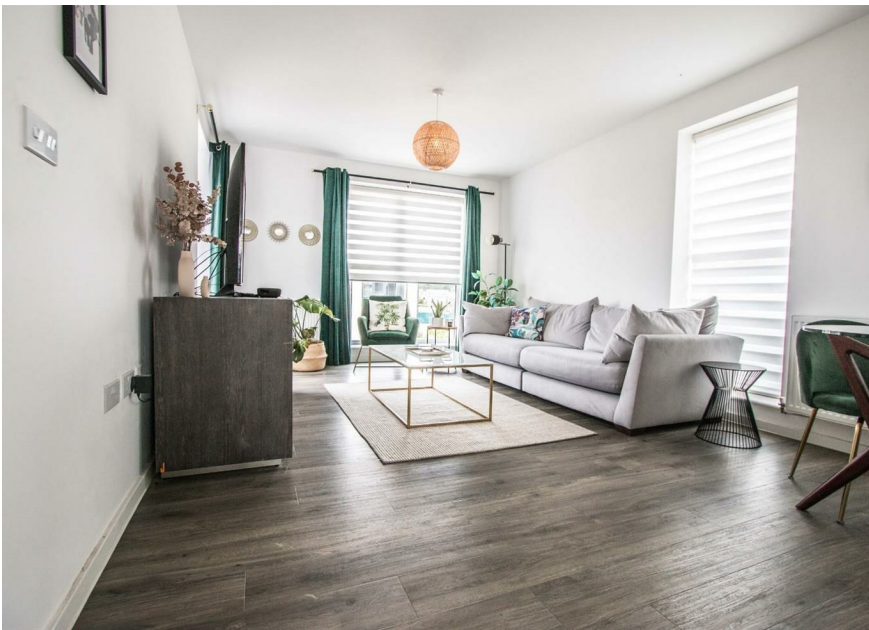
The living room measures 16'6 x 11'9 and offers double windows to side and floor to ceiling window . The 6 m.sq. balcony offers plenty of space for outdoor furniture and is situated above the quayside with open views towards Dock 9.

The master bedroom measures 13'11 x 11'9 with fitted mirror wardrobes, and en suite shower room. Bedroom 2 measures 14'5 x 11'9 and bedroom 3 measures 11'6 x 9'2. The bathroom has a bath with shower above and there is additional storage offered by a hallway cupboard.

This particular apartment also benefits from luxury fitted blinds and curtains throughout which will remain with the property. There is secure video entry phone to the main entrance, high quality flooring - grey carpet to bedroom and 'Amtico ' Spacia laminate flooring to all other rooms, lift access and the extra rare feature of this home, a double length garage and off street parking to front.

This apartment comes to the market ****chain free**** so offering a trouble free immediately proceedable transaction.





- Located On The New Azure Development St. Mary's Island
- Three Double Bedrooms
- En Suite Bathroom To Master
- Balcony & Separate Terrace
- Ex Show Apartment
- Garage & Off Street Parking
- Remainder of The NHBC Certificate

- 1041 Sq. Ft Living Space
- Close To Dock 9
- Short Walk To The Marina & Quays



THE AGENT ON THE QUAYS

Company Reg Number: 08789210 - Registered Office: 12, Station Court, Station Approach, Wickford, Essex, SS11 7AT

