



Dock Head Road, Chatham Quays, ME4 4ZS

Offers in the region of £210,000



Large 797 Sq. Ft. Two Bedroom Apartment At "The Wharf" Chatham Maritime. 21FT. Living Room, Separate Kitchen, Balcony From Master Bedroom. Secure Allocated Parking, Lift Access.

One of the largest two bedroom apartments on The Quays at Chatham Maritime. This outstanding property has a 20'4ft x 13'6ft living room which extends to 17'4ft into a glass bay with views onto the water below and along the quay to the marina. The separate 12'2ft x 7'6ft kitchen is fitted with quality gloss white units and integrated electric oven, hob, extractor, fridge/freezer and a dishwasher.

The master bedroom measures 14'8ft x 10'6ft and incorporates a built in wardrobe, the en suite shower room with Villeroy & Boch fixtures and fittings, and a balcony with views up and down The Quays and towards the Marina. The second bedroom measures 10'3ft x 9'8ft with floor to ceiling mirrored wardrobes to one wall. The bathroom is of a generous size and again with Villeroy and Boch fittings, heated towel rail and mirrored cabinets.

These apartments at 'The Wharf' at Chatham Maritime, are situated alongside the Dockside Outlet Centre, Restaurants, Cafes, Pubs, Co-Op Supermarket & Odeon Cinema. The Quays benefits from 24 hour security, there is secure underground allocated parking and lift access from the garage to the apartment.

This is the largest style of two bedroom apartment on the quays development and represents a rare opportunity to acquire one of these outstanding apartments in a highly desirable waterside location.

Please note that the photographs were taken prior to a tenant moving into the property.



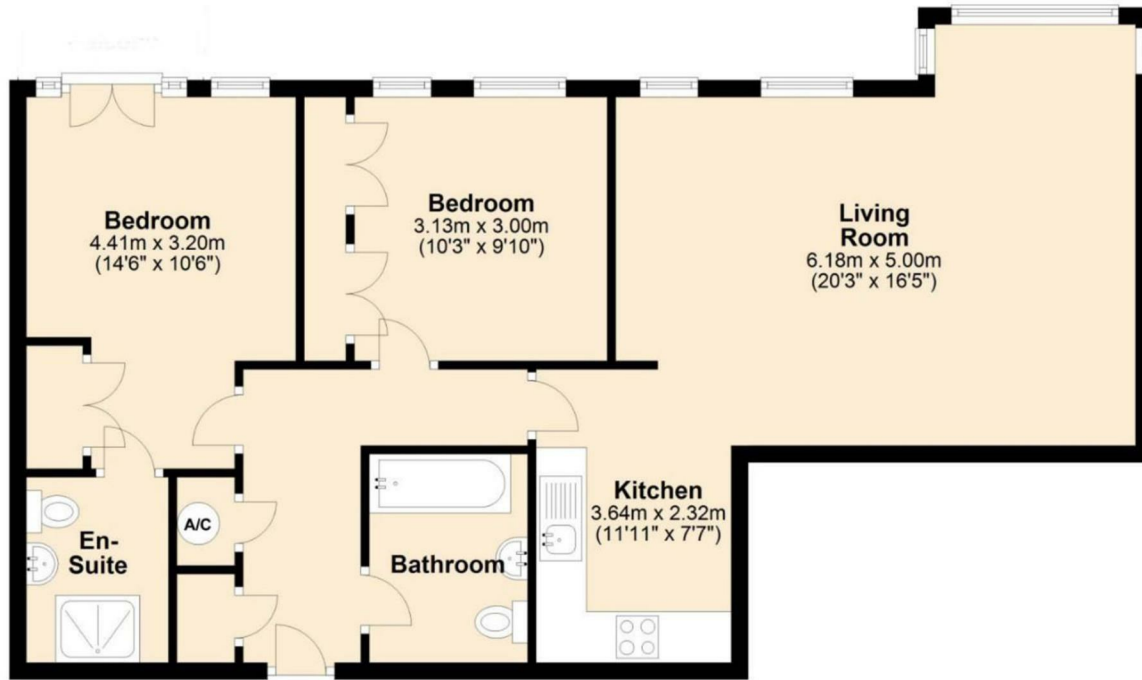


- Two bedroom apartment on the quays with glass bay and balcony
- Situated On The Quays By All Facilities
- 21FT Living Room
- Quality Fitting & Fixtures
- Gloss White Kitchen
- Villeroy & Boch Bathroom Fittings
- Two Large Double Bedrooms
- Floor To Ceiling Windows
- Balcony Off Main Bedroom & En Suite Bathroom
- Allocated Secure Parking



THE AGENT ON THE QUAYS

Company Reg Number: 08789210 - Registered Office: 12, Station Court, Station Approach, Wickford, Essex, SS11 7AT



Total area: approx. 78.5 sq. metres (844.7 sq. feet)
For illustration purposes only - not to scale

