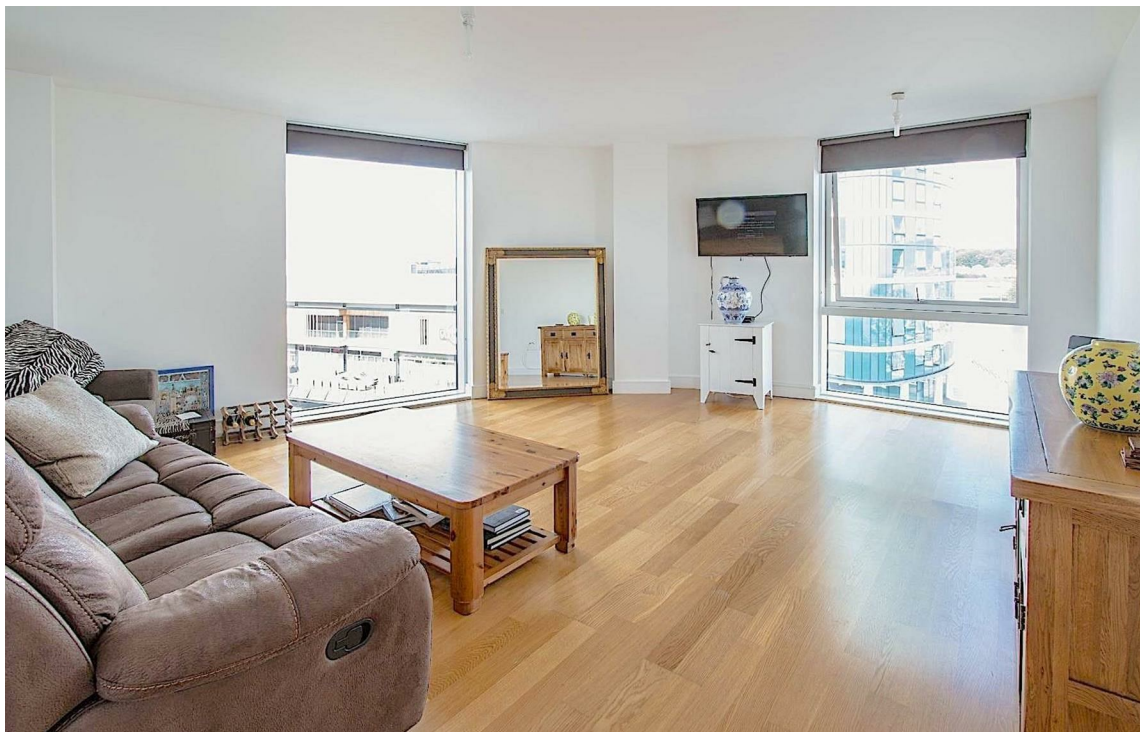




Dock Head Road, , ME4 4ZH
Offers in the region of £184,995



A One Bedroom Fourth Floor Apartment At The Desirable Marina point East Building On The Quays, Chatham Maritime. Allocated Secure Parking, Lift Access, Close To All The Facilities on The Quays.

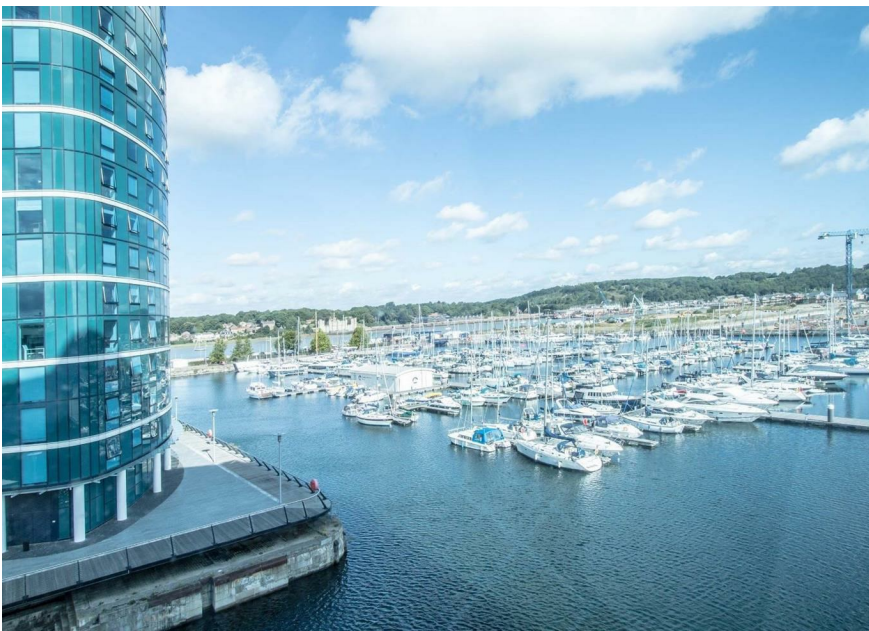
Situated in the much sought after Marina Point East Tower on the Quays at the Chatham Maritime Marina, is this spacious one bedroom luxury apartment with a total area of 567 sq ft.

The view from the floor to ceiling windows in the living/dining area, look out onto the Quays and the Marina. This is a modern luxury property, complimented by high quality Villeroy & Bosch fixtures and fittings in the bathroom and high quality fitted units with integrated appliances in the kitchen. There are doubled glazed units throughout.

This particular property also benefits from a seperate kitchen accessed from the 17.3ft X 16.10ft, lounge/dining room. In addition the generous 15.4ft X 8.7ft bedroom has views along the Quays and a double fitted wardrobe, the bathroom has ceramic floor tiles, a bath with shower above, heated towel rail and integrated mirrored wall units.

As you would expect, this property has allocated secure undercover parking, video entry phone and direct lift access. These larger one bedroom apartments rarely come to market, so please contact us at your earliest convenience to arrange a viewing.





- One Bedroom Apartment At Marina point East Situated At Chatham Quays
- 567 Sq. Ft of Living Space
- 17'3 x 16'10 Living/Dining Room
- Separate Kitchen
- High Quality Fittings & Fixtures Throughout
- Villeroy & Boch Bathroom Fittings
- Allocated Parking Space
- Lift Access
- Alongside All The Facilities On The Quay



THE AGENT ON THE QUAYS

Company Reg Number: 08789210 - Registered Office: 12, Station Court, Station Approach, Wickford, Essex, SS11 7AT

THE QUAYS

CHATHAM MARITIME

SOUTH-FACING ONE BED APARTMENT

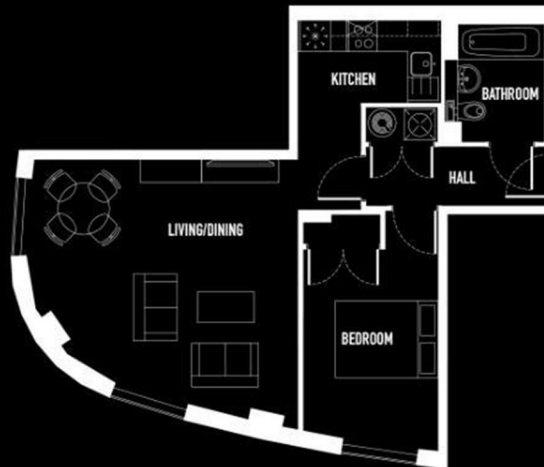
Each apartment comes with a fitted kitchen and bathrooms in neutral tones. Plenty of built-in storage and ready-to-go entertainment and technology.

FEATURES INCLUDE

- White gloss kitchen units
- Black granite worktops and upstands
- All appliances, including oven and dishwasher
- Villeroy and Boch sanitary ware
- Hansgrohe chrome taps
- Ceramic flooring in bathroom

DIMENSIONS

Living/Dining	5.26m x 5.14m	17'3" x 16'10"
Kitchen	2.83m x 1.60m	9'4" x 5'3"
Bedroom	4.68m x 2.63m	15'4" x 8'7"
Total area inc. hall	52.70sqm	567sqft



THE QUAYS

CHATHAM MARITIME

SOUTH-FACING ONE BED APARTMENT

Each apartment comes with a fitted kitchen and bathrooms in neutral tones. Plenty of built-in storage and ready-to-go entertainment and technology.

FEATURES INCLUDE

- White gloss kitchen units
- Black granite worktops and upstands
- All appliances, including oven and dishwasher
- Villeroy and Boch sanitary ware
- Hansgrohe chrome taps
- Ceramic flooring in bathroom

DIMENSIONS

Living/Dining	5.26m x 5.14m	17'3" x 16'10"
Kitchen	2.83m x 1.60m	9'4" x 5'3"
Bedroom	4.68m x 2.63m	15'4" x 8'7"
Total area inc. hall	52.70sqm	567sqft

