





Luxurious and meticulously designed home, perfect for those seeking both comfort and elegance.

Luxurious and meticulously designed home, perfect for those seeking both comfort and elegance.

Overview:

This exquisite six-bedroom, five-bathroom home offers a blend of luxury, comfort, and personal touches that make it truly unique. As you enter, you're greeted by a grand bespoke staircase and a neutrally decorated hallway, leading to a large living room with French doors showcasing spectacular views and a warm log burner for cozy evenings.

Living Spaces:

- Living Room: Spacious with French doors providing breathtaking views, a cozy log burner, and access to the dining room via double doors.
- Dining Room: Accessible from the living room, kitchen, and hallway, perfect for entertaining.
- Kitchen: Impressive with built-in appliances, an island and breakfast bar with sockets, soft-closing drawers, and ample storage.
- Conservatory: Features real oak support beams, offering a charming and warm space connected to the kitchen.
- Utility Room: Includes a sink, cupboards, and a separate bathroom with a shower, ideal for keeping all your washing out of the main living areas.
- Home Office/Sixth Bedroom: A versatile space currently used as an office, suitable for multiple purposes.

Additional Features:

- Games Room: Spanning the length of the house with French doors, skylights, and views of Capstone Ridge, making it light, airy, and perfect for relaxation or entertainment.
- Personal Touches: Includes underfloor heating, door magnets, and air conditioning in the games room, enhancing comfort and convenience throughout the home.

Bedrooms:

- Master Suite: A generously sized room with dual walk-in wardrobes and an en-suite featuring a skylight and a walk-in shower.
- Second Bedroom: Features an en-suite, built-in wardrobe, and stunning views of Capstone Ridge.
- Third and Fourth Bedrooms: Both have built-in wardrobes and remarkable views, with the fourth also offering additional storage.
- Fifth Bedroom: Neutrally decorated with a skylight, adding a touch of natural light and warmth.

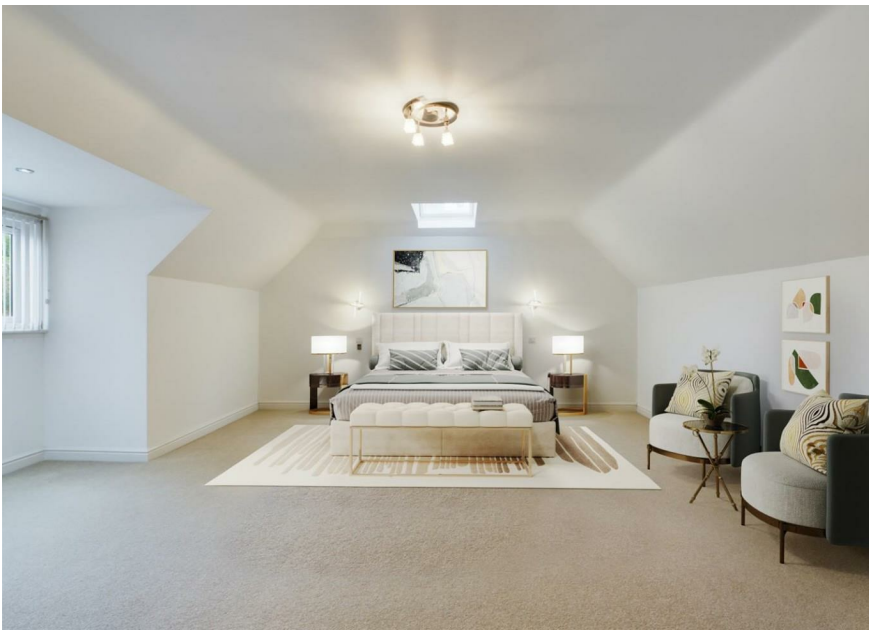
Bathrooms:

- Master Bathroom: Luxuriously appointed with a vanity sink unit, light-up mirror, and a long bath with chrome fixtures.
- En-Suites: Well-equipped with walk-in showers, sink vanity units, light-up mirrors, and skylights.

Outdoor Space:

- Garden: Offers expansive views of Capstone Ridge with a patio and well-maintained lawn, providing a serene outdoor retreat.
 - Driveway and Garages: Spacious enough for multiple cars driveway and two garages, adding practicality to this exquisite home.
- Capstone Ridge boasts a prime location with a range of local amenities and schools right on its doorstep. The nearby Hempstead Valley Shopping Centre, just a 5-minute drive away, offers supermarkets, restaurants, and various retail stores. For commuters, Gillingham, Rainham, and Chatham train stations are also close by, providing access to High-Speed Links that connect you to London St. Pancras.





- Sought after location
- six Bedroom
- Five Bathroom
- Close to local Amenities
- Detached
- Driveway for Multiple Cars
- Two Garages



THE AGENT ON THE QUAYS

Company Reg Number: 08789210 - Registered Office: 12, Station Court, Station Approach, Wickford, Essex, SS11 7AT



Ground Floor



Floor 1

Approximate total area[†]
 3588.69 ft²
 333.4 m²
 Reduced headroom
 53.5 ft²
 4.97 m²

(1) Excluding balconies and terraces

Reduced headroom
 ----- Below 5 ft/1.5 m

While every attempt has been made to ensure accuracy, all measurements are approximate, not to scale. This floor plan is for illustrative purposes only. Calculations are based on RICS IPMS 3C standard.

GIRAFFE360

