





Stunning One Bedroom Marina Facing Luxury Apartment, At The New Azure Development On St. Mary's Island. Private Balcony Overlooking the Marina With Views To The River Medway, With Allocated Parking.

One Bedroom Marina Facing Apartment at Edgewater, situated at the recent Countryside Azure Development on St. Mary's Island.

This stunning apartment is only a year old and offers luxury contemporary living with stunning Marina & River Medway views.

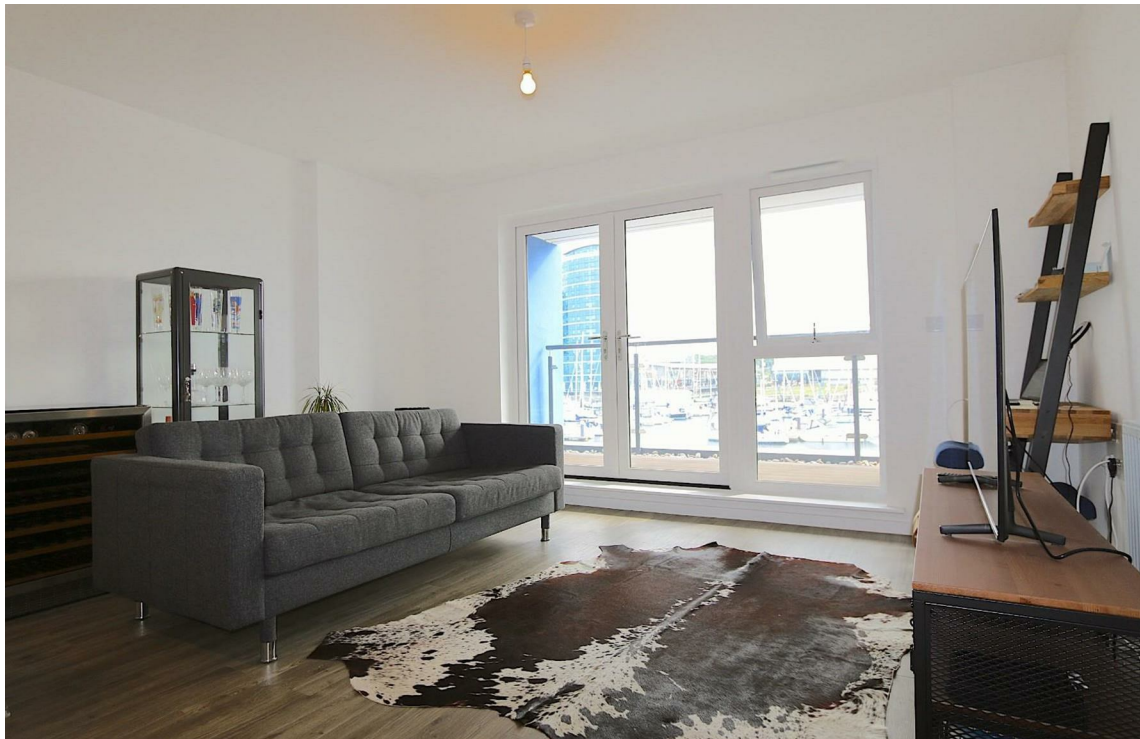
Offering a 20'4 x 14'5 kitchen/living/dining area, the kitchen is of a high quality with handleless units in gloss white with grey base units. LED lighting and laminate worktops. Integrated Neff appliances include a single electric oven, 4 ring electric ceramic hob, dishwasher, and fridge freezer. There are also integrated recycling bins. The Living room opens out to the Marina facing balcony through glazed double doors offering stunning views across the Marina below and beyond to the River Medway.

The 14'0 x 10'5 bedroom also benefits from floor to ceiling windows with those stunning views onto the Marina, and a double wardrobe with sliding mirror doors. The bathroom is also of a high quality with white sanitaryware and Swiss Elm worktops and bath panel, shower over bath, chrome heated towel rail and feature tiling. Additionally there are two storage cupboards, one with a washer/dryer.

The apartment has Amtico flooring throughout with the exception of the bedroom which has a quality grey carpet. Heating is supplied by a gas central heating system and the apartment is fully double glazed.

This apartment is also pre wired for Virgin Media.

One Allocated parking Space.





- One Bedroom Marina Facing Apartment At St. Mary's island
- Part Of The New Azure Development
- 595 Square Foot Of Living Space
- Private Balcony Overlooking the Marina With Views To The River Medway
- 20' Kitchen/Dining/Living Room

- High Quality Fittings Throughout
- Gloss White/Grey Kitchen With Integrated Neff Appliances
- Amtico Flooring
- Gas Central Heating & Double Glazed Throughout
- Allocated Parking Space



THE AGENT ON THE QUAYS

Company Reg Number: 08789210 - Registered Office: 12, Station Court, Station Approach, Wickford, Essex, SS11 7AT

MARINA APARTMENT A1 PLOTS 377, 380, 383, 386

Kitchen/Living/Dining Area
6.20m x 4.39m 20'4" x 14'5"

Bedroom
4.26m x 3.17m 14'0" x 10'5"

