







Four Bedroom Family Townhouse In The Fishing Village, St. Mary's Island. Integral Garage & Balcony To The Third Floor Bedroom With River Medway Views.

Four bedroom townhouse situated in the 'Fishing Village' St. Mary's Island. This property is set over three floors with an 18'1 x 9'5 kitchen/diner, 15'7 x 11'7 living room to the rear with double doors which lead on to a patio area and rear garden. The kitchen has ample wall and base units with a gas hob and electric oven and extractor, integrated fridge/freezer, dishwasher and washing machine. Also at ground floor level is access to the integral garage and cloakroom/WC.

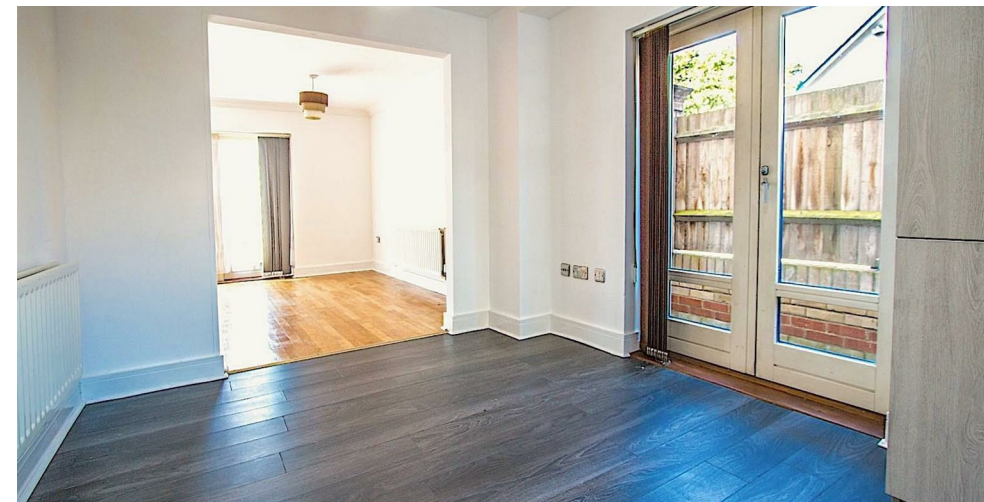
On the first floor are three bedrooms, The master bedroom which measures 13'7 x 10'9 with three Dorma windows flooding the room with light, Double built in wardrobes and an en suite shower room. Bedroom two measures 18'3 x 9'6 and bedroom three measures 9'3 x 9'2, the family bathroom is fitted with a modern white suite, heated towel rail and shower over the bath.

The real feature of this property is the top floor bedroom four which measures 19'8 x 12'2. This room also has access to a balcony with views of the river medway.



This is a large four bedroom family home in a desirable location, garage and parking to front. It is double glazed throughout and has gas central heating.

This property is offered to market chain free.







- Four Bedroom Family Home In 'The Fishing Village' St. Mary's Island
- Set Over Three Floors
- 15'7 X 11'7 Lounge
- 18'1 x 9'5 Kitchen/Diner
- Integrated Garage
- En Suite To Master Bedroom
- Ground Floor CloakroomWC
- Close To The Central Parkway & Riverside
- Double Glazing & Gas Central Heating
- Offered To Market Chain Free



**THE AGENT ON THE QUAYS**

Company Reg Number: 08789210 - Registered Office: 12, Station Court, Station Approach, Wickford, Essex, SS11 7AT

