

Island Homes Kent Ltd  
Unit 8D, Pier 5, Dock Head Road,  
Chatham Maritime, Kent, ME4 4ZJ

01634 89 28 28  
www.islandhomeskent.co.uk



## 5 Trevale Road, Rochester, ME1 3NZ Offers in excess of £575,000

Spacious and Versatile Cornish Property in Rochester, Kent

Description: Discover endless opportunities and possibilities with this vast and versatile Cornish property, located in the highly sought-after area of Rochester, Kent. Perfectly suited as a large family home, this property also offers tremendous potential as an investment opportunity or as a dual residence (subject to planning permission) with a potential yield of 6.67%.

Investment Potential:

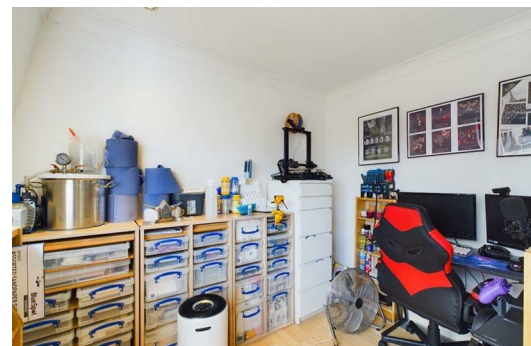
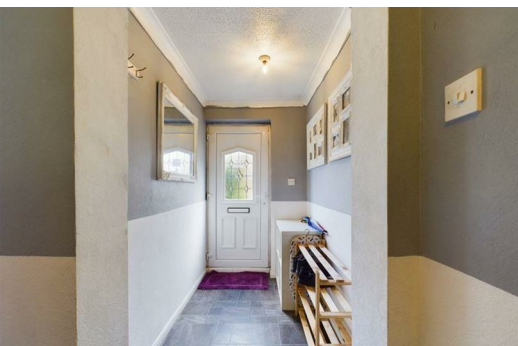
Short Term Lets: Ideal for an investor looking to capitalize on short-term rental markets.

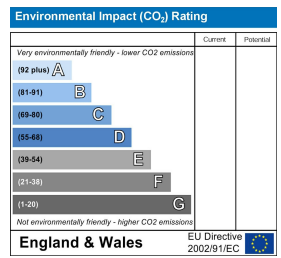
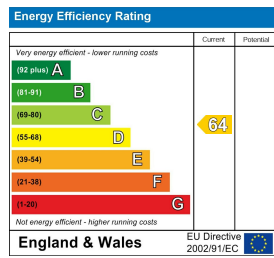
HMO (House of Multiple Occupation): Potential for conversion into a house of multiple occupation, increasing rental income.

Features:

Bedrooms: 7

Bathrooms: 3





**THE AGENT ON THE QUAYS**

Company Reg Number: 08789210 - Registered Office: 12, Station Court, Station Approach, Wickford, Essex, SS11 7AT