





Four Bedroom Townhouse On Starboard Crescent , Situated On The New Development At Colonial Wharf, Chatham Maritime. This Property Presents In Immaculate Condition With Secluded Landscaped Garden, 2 Off Street Parking Spaces & Garage.

An immaculately presented four bedroom townhouse situated at the new Colonial Wharf development at Chatham Maritime. This family home offers four bedrooms and modern high quality kitchen & bathrooms, as well as a landscaped and well planted rear garden, integral garage and two off street parking spaces to front.

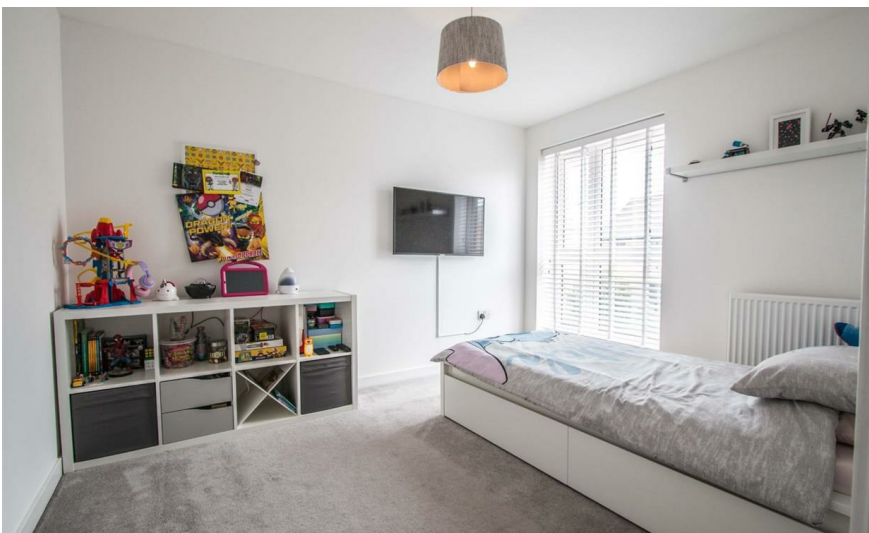
On the ground floor is the large kitchen/breakfast room measuring 16'1 X 9'6 with quality white wall and base units and wooden work surfaces. Integrated electric hob, oven and extractor, fridge/freezer, dishwasher and washer/dryer. Double doors open out to the landscaped rear garden. There is also a cloakroom /WC at this level.

On the first floor is the 16'1 x 13'3 living room with Juliet balcony and double doors opening out to a view of the rear garden. The Dining room/ bedroom 5 measures 13'10 x 9'3 and bedroom 4/office measures 6'6 x 6'5.

On the second floor are three further bedrooms and family bathroom. The master bedroom measures 12'11 x 9'1 with en suite bathroom, bedroom two measures 11'3 x 9'1 and bedroom three measures 9'6 x 6'8. The family bathroom has a quality white suite and is half tiled.

This family home benefits from the remainder of the NHBC guarantee, double glazing throughout and gas central heating.



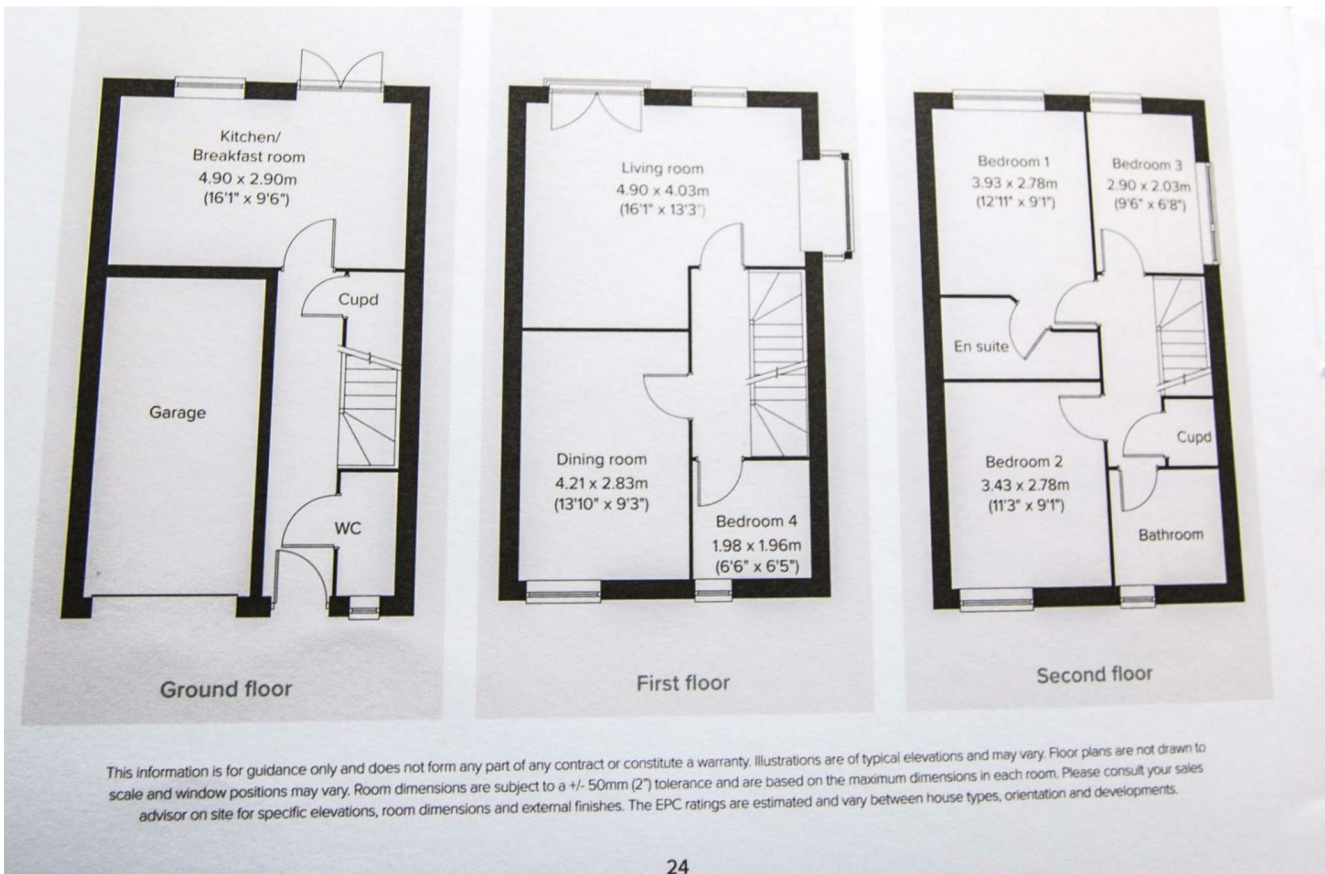


- Four Bedroom Townhouse At 'Colonial Wharf' Chatham Maritime
- Immaculately Presented
- Quality Kitchen & Bathrooms
- 16'1 X 13'3 Living Room
- Landscaped Rear Garden
- En Suite To Master Bedroom
- Remainder Of The NHBC Warranty (7 Years)
- Double Glazing & Gas Central Heating
- Integral Garage
- Two Off Street Parking To The Front Of The Property



THE AGENT ON THE QUAYS

Company Reg Number: 08789210 - Registered Office: 12, Station Court, Station Approach, Wickford, Essex, SS11 7AT



For further information or to arrange a viewing call 01634 89 28 28
www.islandhomeskent.co.uk

All measurements are approximate and are taken at the widest points. They should not be used for the purchase of furnishings. These particulars are issued on the express understanding that all negotiations are conducted through Island Homes Limited. They do not form part of a contract and are for general guidance only. We would recommend that the information which we provide about the property is verified by yourselves on inspection and also by your solicitor before legal commitment to the purchase. Photos are subject to copyright law.