







A TRULY AMAZING 5 BEDROOM HOME IN AN EXCLUSIVE DEVELOPMENT OF ECO FRIENDLY HOMES, WITHIN AN ICONIC AND UNIQUE HISTORIC SITE, UPDATED AND FITTED TO BEYOND SHOW HOME STANDARD, OVERLOOKING THE LOVELY OPEN LANDSCAPED GROUNDS, PLUS SUN TRAP WALLED GARDEN AND 3 PARKING SPACES.

This wonderful eco friendly home has a total area of 173 Sq.m and is situated in a superb location overlooking landscaped grounds within an iconic site that dates back to 1757, with this truly amazing 5 bedroom house updated and improved to well beyond show home standard, with ground breaking technology and sleek design, plus under floor heating throughout, solar panels and a heat recovery system to keep household bills to a minimum. The current and first owners, have fitted luxury Hammonds Furniture to all the bedrooms and also to the comfortable living room.

The ground floor accommodation has a spacious bedroom with a luxury en suite shower room, fitted as all the shower/bathrooms are within the property, which includes contemporary Roca sanitary ware with white suite, large walk in showers, porcelain tiled floors, heated towel rails and mirrored vanity wall units. There is a luxury and spacious cloakroom fitted as above too, with a real feature of this particular property, the newly installed oak/glass stairs and balustrades.

The kitchen and dining area really are a wonderful place to spend time, offering full width doors that overlook the beautifully landscaped courtyard garden, with a high spec luxury kitchen fitted with matt grey units, Quartz worktops and matching centre bar, Bosch double oven, and matching hob, dishwasher and fridge freezer, with the hall cupboard housing the washer/dryer.

The middle floor provides the family bathroom, two bedrooms, both fitted to a high spec and the spacious south facing living room, with views across the open landscaped grounds, plus fitted tv and storage Hammond units.

The top floor is a real feature of this design, with its oak and glass staircase, second bedroom with luxury en suite, plus the superb master bedroom, offering high ceilings, a south facing balcony with views across the landscaped gardens and luxury Hammonds wardrobes.

PLEASE NOTE : The floor plan does slightly differ form the actual property.

Externally.

The landscaped unoverlooked walled garden is a real sun trap, with a small secluded decked area and a patio adjoining the rear of the house plus an array of plants shrubs and trees.

Three three parking spaces are provided and an electric charging point.

The communal outdoor areas have been beautifully landscaped, so that residents can make the most of the surrounding neighbourhood, making a unique setting, with new cycle paths and walkways to promote sustainable travel.







- Superb 5 Bedroom Eco Friendly Home
- Unique Setting Overlooking Landscaped Grounds
- Exclusive Development Within an Iconic and Historic Site
- Upgraded and Updated to Beyond Show Home Standard
- Beautifully Fitted Luxury Kitchen Overlooking Garden
- Master Bedroom with South Facing Balcony and Views
- Luxury Family Bathroom Plus Three En Suite Shower Rooms
- Quality Hammonds Wardrobes and Fitted Units Throughout
- Three parking Spaces are Provided
- Wonderful Sun Trap and Secluded Walled Garden



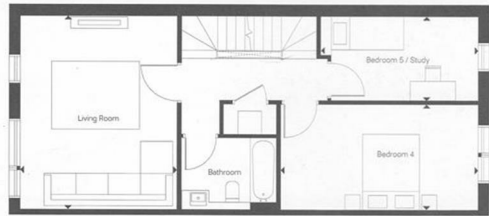
**THE AGENT ON THE QUAYS**

Company Reg Number: 08789210 - Registered Office: 12, Station Court, Station Approach, Wickford, Essex, SS11 7AT





SECOND FLOOR



FIRST FLOOR



GROUND FLOOR

