



Malin House, Rivermead, St. Mary's Island, ME4 3AB

Offers in the region of £319,995



A LARGE THIRD FLOOR TWO BEDROOM APARTMENT OFFERING PANORAMIC VIEWS ALONG THE RIVER MEDWAY, WITH A 31FT OPEN PLAN LIVING SPACE, 19FT MASTER BEDROOM, EN SUITE TO MASTER, LIFT ACCESS AND TWO ALLOCATED PARKING SPACES. NO CHAIN

This spacious third floor two bedroom apartment is one of the largest waterfront apartments on St. Mary's Island and is situated in a wonderful position offering panoramic views along the River Medway.

The accommodation comprises of a wide entrance hall, leading through to a 31'5 open plan dual aspect living space which offers panoramic westerly and northerly views along the waterfront, with the well fitted original kitchen having a range of wall and floor units with contrasting work surface areas, plus dishwasher, washing machine and fridge/freezer. There are double doors leading from the living room to the balcony, offering wonderful views both up and down the River Medway.

There are two double bedrooms with the master bedroom measuring 19'7 max x 9'6 also offering lovely views, with this room having two double fitted wardrobes. There is a good sized en suite shower room and this is fitted with double shower and a white suite plus a heated towel rail.

Bedroom two is a good double bedroom and this measures 12'5 x 11'1 and again has fitted wardrobes.

The main bathroom is fitted with a white suite and heated towel rail.

The property benefits from gas central heating and double glazed windows throughout.

There is lift access and allocated parking is available for two vehicles, with the building being surrounded by lawned communal gardens.

AN EWS CLADDING CERTIFICATE IS IN PLACE FOR THIS BUILDING.





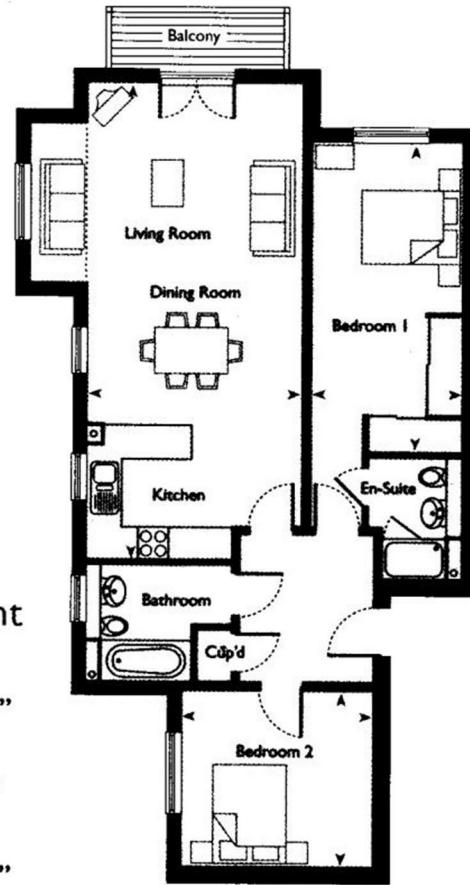
- Large Two Bedroom Apartment with Panoramic Views
- Wonderful Waterfront Location on St.Mary's Island
- Dual Aspect 31ft Open Plan Living Space
- Spacious living Room with Balcony and Superb Views
- Well Fitted Kitchen with Integral Appliances
- 19ft Master Bedroom with En Suite Shower
- Spacious Second Bedroom
- Lift Access and Two Under Cover Parking Spaces
- Offered with No Chain
- Early Viewing Advised



THE AGENT ON THE QUAYS

Company Reg Number: 08789210 - Registered Office: 12, Station Court, Station Approach, Wickford, Essex, SS11 7AT

VIEWS OVER THE RIVER MEDWAY



2 Bedroom Apartment

Kitchen/Living Room/Dining Room
9.21m x 4.14m 31' 5" x 13' 7"

Bedroom 1
5.96m x 2.89m 19' 7" x 9' 6"

Bedroom 2
3.78m x 3.39m 12' 5" x 11' 1"

