





*** ANOTHER PROPERTY SOLD BY ISLAND HOMES ***Stunning Completely Renovated & Updated Three Bedroom Home On St. Mary's Island. Luxury Kitchen & Bathrooms, Gardens To Rear & Side, Conservatory, Private Parking For Two Vehicles.

A totally unique and refurbished three bedroom property situated on Cheldoc rise, St. Mary's Island.

This property represents an opportunity to purchase a beautifully presented end of terrace property on a large plot with garden areas to back and side and off street driveway for two vehicles.

The original owners have remodelled the property in recent years, adding a conservatory, high quality fitted kitchen, new bathrooms, new wooden doors throughout the property, limed oak flooring throughout the ground floor and quality white carpet on the 1st floor. In addition the staircase has been replaced with a 'Neville Johnson Oak & Glass panel staircase and the gardens have been professionally landscaped.

On the ground floor you will find an entrance hallway with ground floor cloakroom, this opens into the lounge area painted in 'Farrow & Ball' colours with limed oak flooring and staircase leading to the first floor. The kitchen has a comprehensive range of wall and floor units with an electric range cooker and additional storage units built around an american style fridge with pull out drawer freezer. There is plenty of worktop space and a built in dishwasher and washer/dryer. The conservatory is used as a dining room and this leads through to a south facing rear garden which has a decked suntrap area to the rear and paved patio area with a garden shed to the side with a gate through to the two car brick paved driveway and side garden which is mainly laid to lawn.

The first floor has a newly fitted family bathroom which includes a heated towel rail and quality fittings and fixtures, Two double bedrooms and an a new en suite shower room to the master bedroom. The third bedroom is a good single bedroom size and there is a high quality white carpet throughout giving a luxury feel.

This property represents a uniquely styled, extended and updated three bedroom home with the advantage of a large plot which has an open aspect to one side.

Early viewing is recommended.





- Unique & Remodelled Three Bedroom Home
- High Quality New Kitchen
- New quality Bathrooms
- Feature Neville Johnson Staircase
- Large Plot With Gardens To Rear & Side
- Private Driveway For Two Vehicles
- Conservatory
- En Suite To Master Bedroom
- Secluded Position On Cheldoc Rise
- Open Aspect To One Side

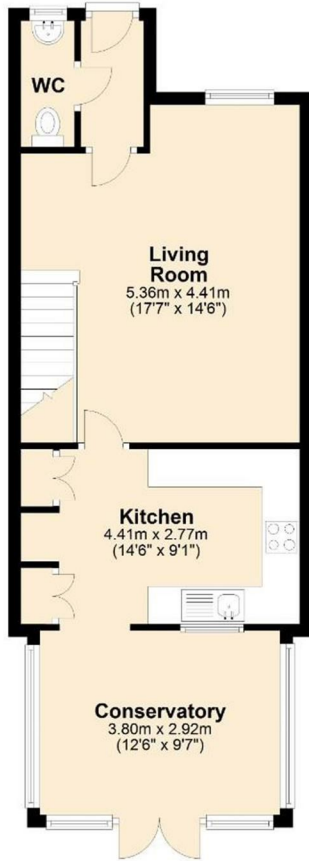


THE AGENT ON THE QUAYS

Company Reg Number: 08789210 - Registered Office: 12, Station Court, Station Approach, Wickford, Essex, SS11 7AT

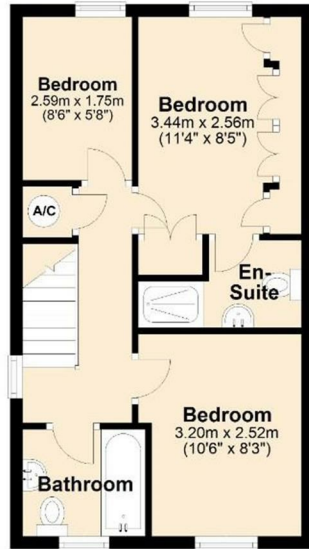
Ground Floor

Approx. 50.0 sq. metres (537.7 sq. feet)



First Floor

Approx. 36.3 sq. metres (390.6 sq. feet)



Total area: approx. 86.2 sq. metres (928.3 sq. feet)
For illustration purposes only - not to scale

