



LARGE TWO DOUBLE BEDROOM APARTMENT WITH BALCONY AT "THE WHARF" CHATHAM MARITIME. STUNNING VIEWS ACROSS THE MARINA AND ALONG THE QUAYS. SECURE ALLOCATED PARKING AND LIFT ACCESS.

This well presented two bedroom apartment is located on the unique Quays Development at Chatham Maritime and is situated on the top floor with stunning views from the balcony, across the Marina and the River Medway to Upnor Castle and also along the quays. There are two double bedrooms, lift access and secure parking below the building.

Situated within this exclusive development, this is modern luxury living, with high quality fixtures and fittings throughout the property and offering panoramic views across the Marina to the River Medway and across the surrounding Quays from the west facing balcony. There is an open plan 17'7 x 12'4 living room with double doors leading out onto the balcony and a quality fitted kitchen in gloss white with contrasting granite work surface areas, plus all the appliances you would expect including an electric oven, hob & extractor, built in fridge/freezer and a dishwasher.

This particular apartment is one of the largest on The Quays development, with the master double bedroom measuring 11'11 x 9'45 and offering a good sized en suite shower room, with the second double bedroom measuring 14'9 x 9'5, both have Juliet balconies.

Quality flooring features throughout the property, Villeroy and Boch fittings to both the main bathroom and the en suite shower room.

The Quays development is just yards from a variety of amenities, including a co-op supermarket, various restaurants and bars, plus an Odean cinema and the Dockside Outlet Shopping Centre.

These apartments are double glazed through out, have lift access and secure underground allocated parking.

The total living area is 798 Sqft.



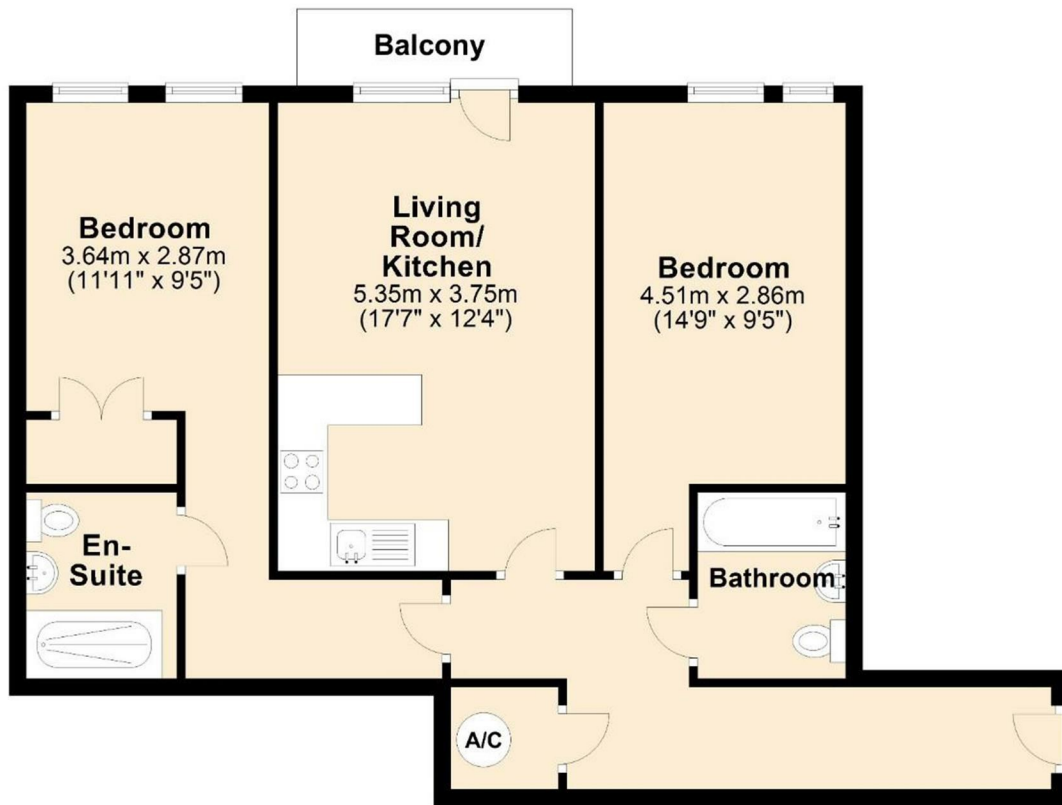


- Stunning Top Floor Views Across The Marina To Upnor Castle
- Two Double Bedrooms
- Quality Fittings Throughout
- Lift Access
- Secure Allocated Underground Parking
- 21'9 x 12'10 Living Room
- En Suite Shower Room To Master Bedroom
- Gloss White Kitchen Units With Black Granite Worktops
- Close to all Amenities on The Quays
- 798 Sq.Ft Total Living Space



THE AGENT ON THE QUAYS

Company Reg Number: 08789210 - Registered Office: 12, Station Court, Station Approach, Wickford, Essex, SS11 7AT



Total area: approx. 74.3 sq. metres (799.3 sq. feet)
For illustration purposes only - not to scale

