



Two Bedroom Apartment at 'The Wharf' Chatham Maritime. Lift Access & Allocated Parking, Juliette Balconies With Views Along The Quay & Across The Water Below.

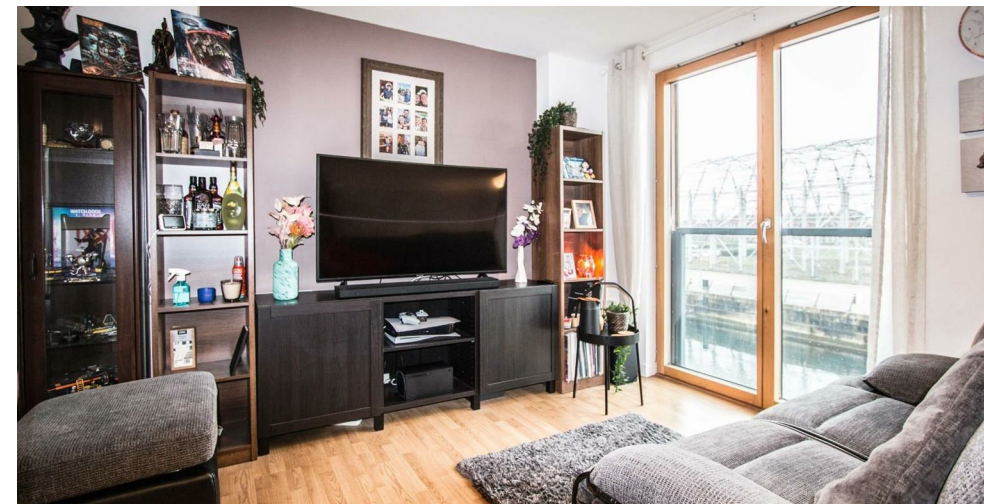
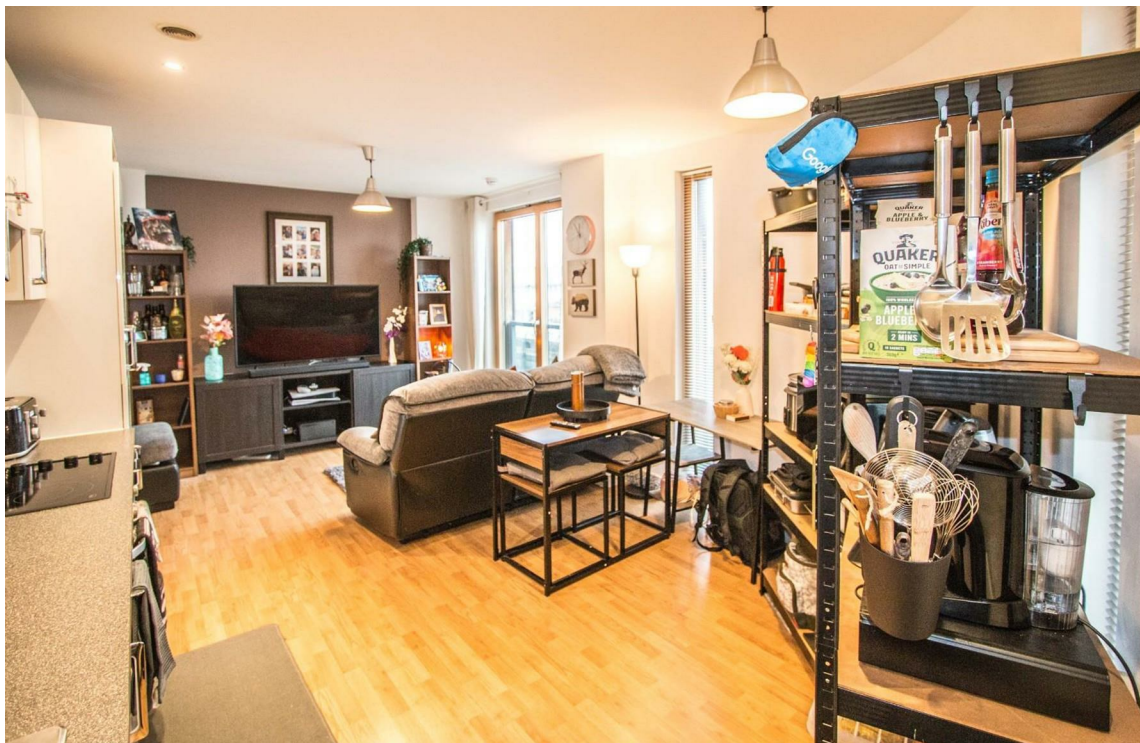
A two bedroom corner apartment at 'The Wharf' building on the quays at Chatham Maritime. This is one of only three of this design of apartment on the quays, this apartment being situated on the first floor with views out on to the quay and water below.

The 20'6 x 11'6 lounge/kitchen /diner has the benefit of a juliette balcony, the kitchen being of modern design with gloss white units and black contrasting worktops, integrated oven, electric hob & extractor, dishwasher & fridge/freezer.

The 16'0 x 10'11 master bedroom also benefits from a floor to ceiling window and also an ensuite shower room with quality fixtures/fittings including a heated towel rail. Bedroom two measures 13'5 x 10'3 is also a good sized double and the man bathroom is fitted similarly to the ensuite with modern white suite, shower over bath, fitted mirrored wall units and a heated towel rail.

These apartments rarely come to market and represent an opportunity to acquire a highly desirable apartment here on the quay , close to all amenities including the dockside outlet centre, cinema, climbing center, restaurants, pubs and late opening co-op supermarket.

This apartment also benefits from an allocated secure underground parking space.





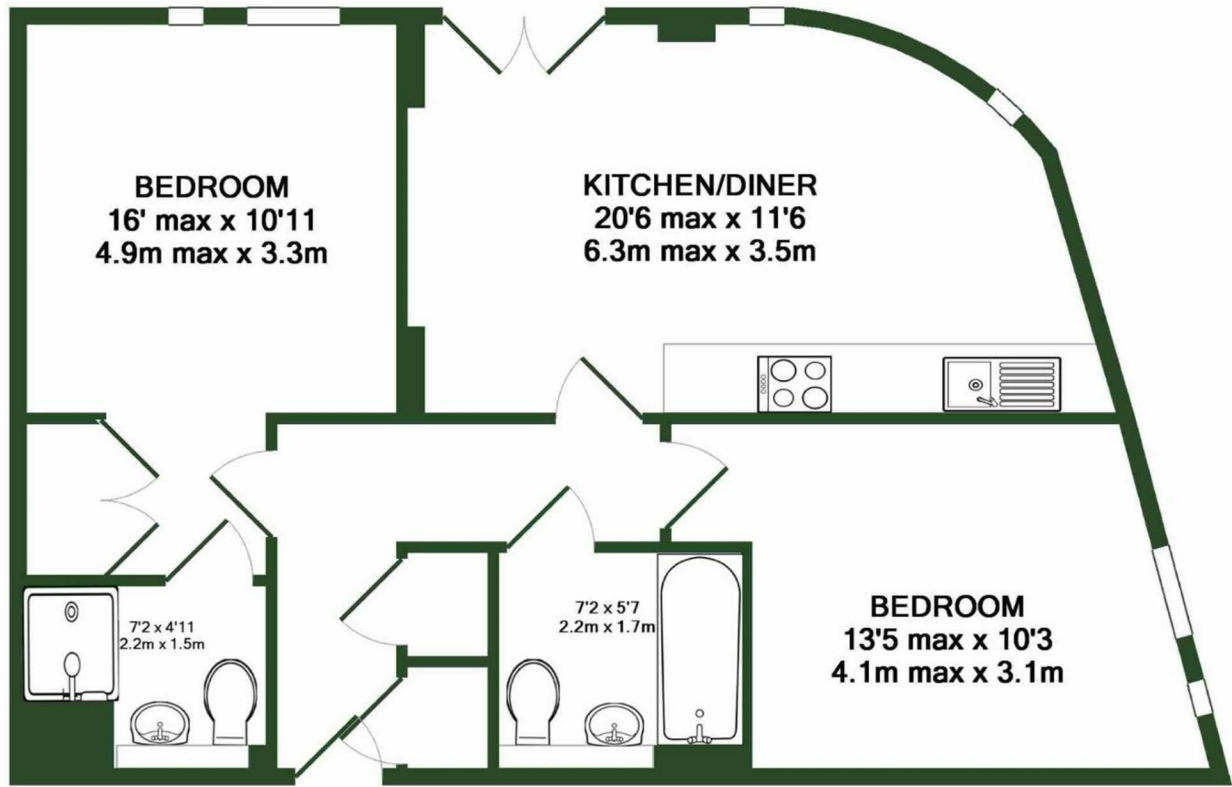
- Two Bedroom Apartment At The Wharf.
- En Suite Bathroom To The Master Bedroom
- Lounge/Kitchen/Diner With Juliette Balcony
- Generously Sized Bedrooms
- Modern Gloss White Kitchen

- High Quality Bathrooms
- Allocated Parking
- Close To All Local Amenities



THE AGENT ON THE QUAYS

Company Reg Number: 08789210 - Registered Office: 12, Station Court, Station Approach, Wickford, Essex, SS11 7AT



For further information or to arrange a viewing call 01634 89 28 28  
[www.islandhomeskent.co.uk](http://www.islandhomeskent.co.uk)

All measurements are approximate and are taken at the widest points. They should not be used for the purchase of furnishings. These particulars are issued on the express understanding that all negotiations are conducted through Island Homes Limited. They do not form part of a contract and are for general guidance only. We would recommend that the information which we provide about the property is verified by yourselves on inspection and also by your solicitor before legal commitment to the purchase. Photos are subject to copyright law.