



A One Bedroom Apartment At 'The Wharf' Building On The Quays At Chatham Maritime. Luxury Kitchen & Bathroom, Two Juliet Balconies & Allocated Parking.

A beautifully presented one bedroom first floor apartment at 'The Wharf' building on the quays at Chatham Maritime, having been maintained to a high standard by the present owner.

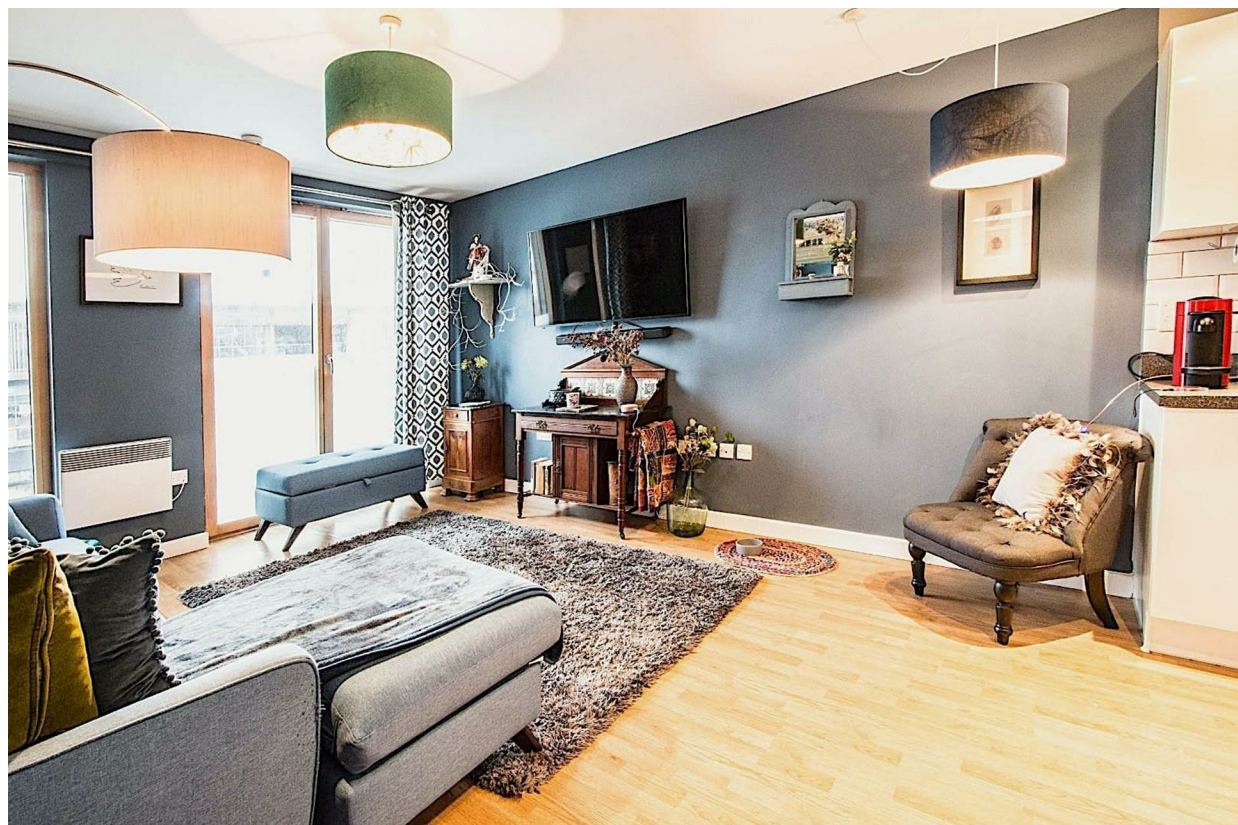
The contemporary open plan living/dining/kitchen area measures 21'9 x 11'10 with double doors opening out to a Juliet balcony and views onto the quays . There is a well fitted kitchen in gloss white with granite worktops and all the appliances you would expect, including dishwasher, fridge/freezer, electric oven hob & extractor. The washing machine/tumble dryer is located in a storage/laundry cupboard in the entrance hall.

The bedroom measures 10'5 x 9'5 and offers a fitted wardrobe and a Juliet balcony also offering views onto the quays. The bathroom has high quality ceramic floor tiles, Villeroy & Boch bathroom fittings and includes a bath with shower above, heated towel rail plus integrated mirrored/ wood wall units.

This property has allocated parking for one vehicle in a secure undercover parking area.

The Quays development includes an outlet centre, cinema, two public houses, several restaurants, a climbing centre, hairdressers and a late opening Co-op supermarket, all set around a yachting marina.





- One Bedroom Apartment In The Highly Desirable Wharf building on Pier 5
- Luxury Kitchen & Bathroom
- Total Living Space of 457 Sq.Ft.
- Two Juliet Balconies
- Views Onto The Quays
- Lift Access

- Allocated Parking Space In A Secure Car Park
- Close To All Local Amenities



THE AGENT ON THE QUAYS

Company Reg Number: 08789210 - Registered Office: 12, Station Court, Station Approach, Wickford, Essex, SS11 7AT

