





A COMPLETELY UNIQUE DETACHED PROPERTY STANDING WITHIN A WONDERFUL COUNTRYSIDE SETTING, SURROUNDED BY ORCHARDS AND WITH THE ORIGINAL BARN BEAUTIFULLY RENOVATED AND EXTENDED TO PROVIDE A TRULY AMAZING AND ECLECTIC HOME, ALL ON ONE LEVEL, LUXURY SPECIFICATION AND WITH AROUND 3/4 OF AN ACRE.

This truly unique home is built all on one level and was conceived and brought to life by the current owner, who has managed to construct a luxurious and comfortable four bedroom property in a wonderful location, totally overlooked at the rear and surrounded by orchards and the local countryside, with grounds we believe to be close to 3/4 of an acre.

One section of this home was originally a barn and over a period of two years, was extended to around 2036 Sq ft and totally renovated into the property that you see today, with four double bedrooms, open plan luxury kitchen and dining area, plus a superb living room with vaulted ceiling.

The open plan living space with its vaulted ceiling and lovely stone flooring, measures 46ft in total by 21ft, making this a wonderful area for those who love to entertain, with the kitchen area fitted with a twin butler sink, copper taps and contrasting solid wood worktops giving a homely feel, with the expensive lighting and wide bi-fold doors, really making this a special and modern place to relax. There is also a large utility room and this sits alongside the main kitchen.

The master bedroom is another real feature of this home, measuring 23ft in length and providing a walk in dressing room and luxury en suite shower room, with the luxury family bathroom offering a white suite that includes a Victorian bath and a wash hand basin set within a custom made display/vanity unit and large walk in shower.

The grounds which are mostly lawned, are completely overlooked at the rear and surrounded by orchards and open countryside, with a wide decked area adjoining the rear of the property, with a large workshop that sits at the rear of the plot and this has heating and lighting.

Parking is provided for at least six vehicles to the front of the property, approached via an electric gate.





- A Truly Unique Home Surrounded by Open Countryside
- Extended and Beautifully Renovated Barn Conversion
- Luxurious Specification with 4 Double Bedrooms
- Open Plan 46ft x 21ft Vaulted Living Space
- Luxury Kitchen/Breakfast Room with Vaulted Ceiling
- Master 23ft Bedroom with Luxury En Suite
- Large Family Bathroom Includes Walk in Shower
- Wonderful Rural Setting Yet Close to Maidstone
- Parking for at Least Five Cars Plus Large Workshop
- Superb Plot Approaching 3/4 of an Acre

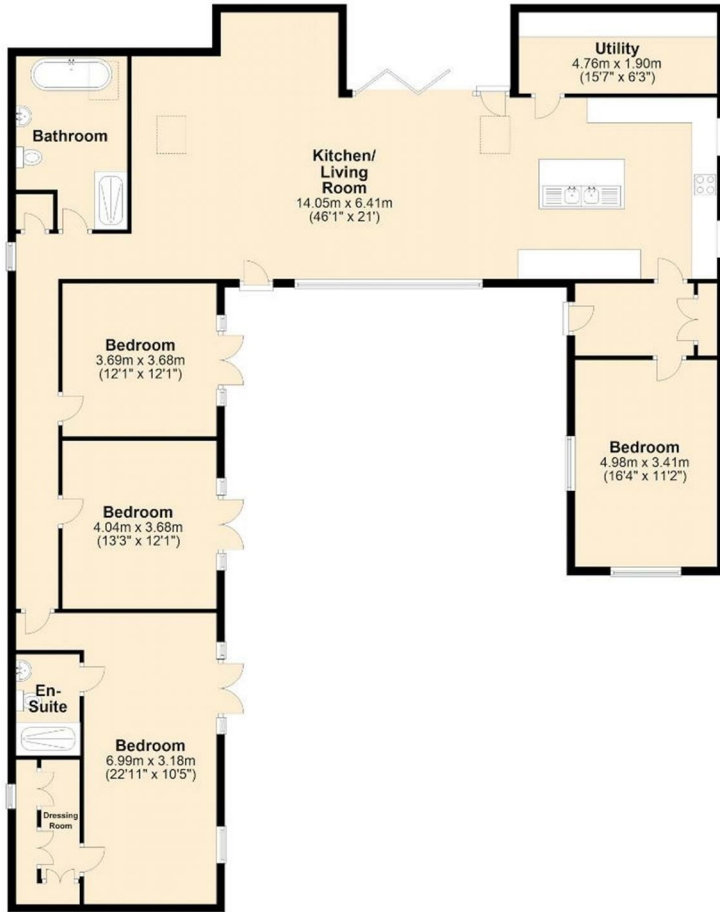


**THE AGENT ON THE QUAYS**

Company Reg Number: 08789210 - Registered Office: 12, Station Court, Station Approach, Wickford, Essex, SS11 7AT

### Ground Floor

Approx. 189.2 sq. metres (2036.6 sq. feet)



Total area: approx. 189.2 sq. metres (2036.6 sq. feet)

