





***** ANOTHER PROPERTY SOLD BY ISLAND HOMES *** AN EX SHOW HOME, THREE BEDROOM TOWNHOUSE ON RIPPLEWATERS, THE NEW COUNTRYSIDE DEVELOPMENT ON ST. MARY'S ISLAND. 1ST FLOOR TERRACE & INTEGRATED GARAGE.**

Situated at the New Countryside Azure development on St Mary's Island, is this ex show home, offering spacious accommodation of 1590 Sq.Ft (148 M.sq.) with an 18.3 M. Sq roof terrace on the first floor and a south backing garden.

This family home offers a generous amount of living space with large bedrooms, open plan kitchen/diner/family room, separate living room and the feature large terrace on the first floor.

On the ground floor a long hallway gives access to the integrated garage, a large storage cupboard and a WC. The open plan family area has a kitchen area which measures 17'8 x 10'8 and dining area beyond which measures 18'2 x 9'7 this in turn leads out to the south facing rear garden with low maintenance paved and granite shingle areas.

On the first floor is the 16'5 x 13'9 living room with an 18.3 m.sq, south facing terrace overlooking the rear garden and bedroom three which measures 10'2 x 10'0. The family bathroom is also on the first floor.

On the second floor are two generous bedrooms with the master measuring 13'2 x 17'7 with both a dressing area, with two double mirrored wardrobes and also an en suite shower room. The second bedroom measures 14'0 x 13'5 and also has an en suite shower room.

This design of property has a long wide hallway which leads through to the open plan kitchen/dining/family area and gives access directly through to the garden, making for an ideal entertainment space. The first floor living room gives access onto a large south facing terrace for relaxing and there are three large bedrooms, two with en suite bathroom facilities.

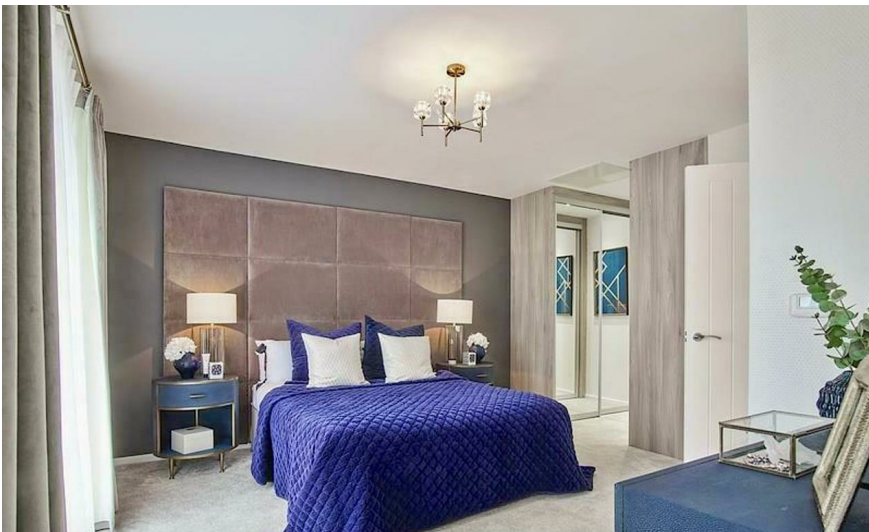
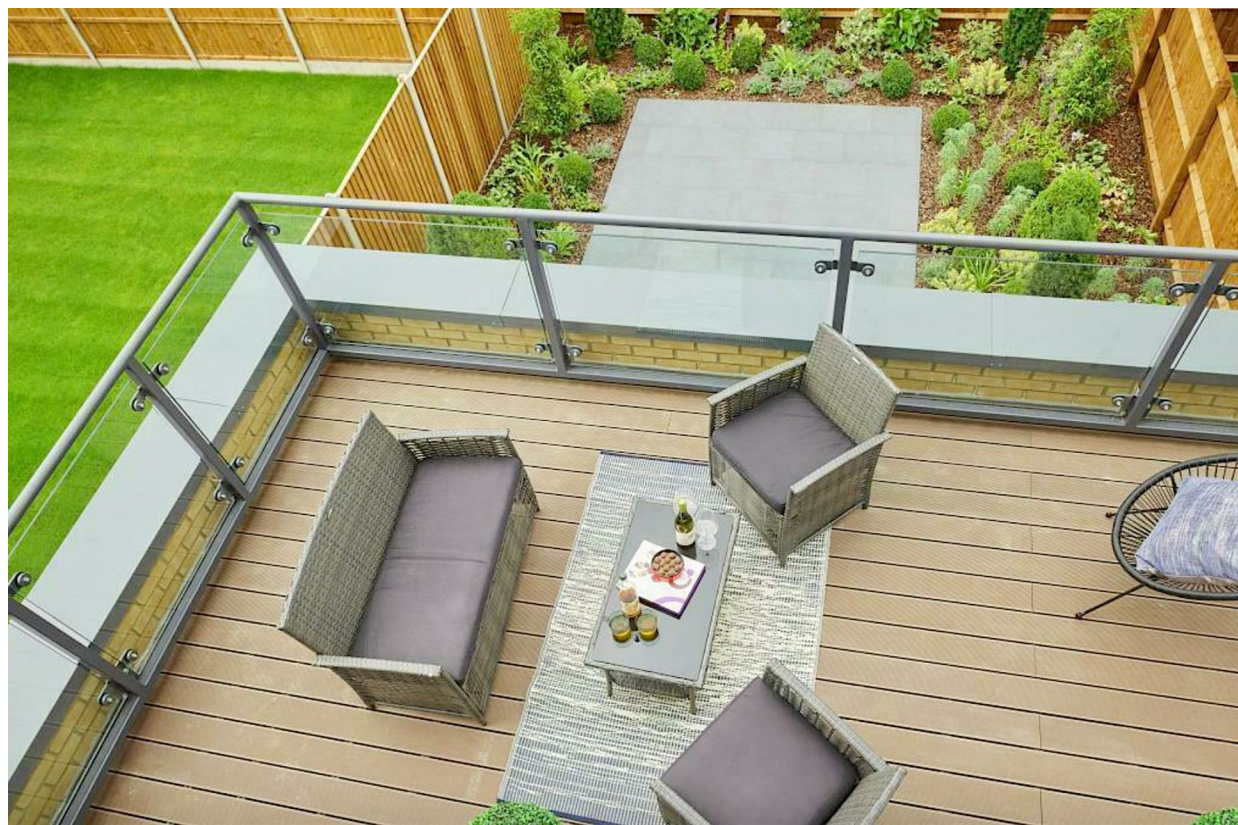
Parking is provided by an integral garage with additional allocated parking to the side of the property. This property is located close to the large dock and the west marina which gives access to lovely riverside walks along the river Medway.

As these properties rarely come back to market, this is a rare opportunity to secure a highly desirable property on this new countryside development.

PLEASE NOTE, THE PHOTOGRAPHS SHOWN ARE FOR THE ORIGINAL SHOW HOME

The remainder of NHBC certificate remains with the property.





- PART OF THE NEW 'AZURE' COUNTRYSIDE DEVELOPMENT ON ST. MARY'S ISLAND
- THREE BEDROOM , THREE BATHROOM TOWNHOUSE
- EX SHOW HOME
- LARGE 18 M SQ. 1ST FLOOR ROOF TERRACE
- 16'5 X 13'9 LIVING ROOM
- 17'8 X 10'8 GROUND FLOOR KITCHEN/DINER (FAMILY ROOM)
- LARGE 21'9" INTEGRAL GARAGE PLUS ADDITIONAL ALLOCATED PARKING SPACE
- SOUTH FACING GARDEN
- REMAINDER OF THE NHBC CERTIFICATE
- 1590 SQ.FT. TOTAL LIVING SPACE



THE AGENT ON THE QUAYS

Company Reg Number: 08789210 - Registered Office: 12, Station Court, Station Approach, Wickford, Essex, SS11 7AT

