





A Two Bedroom Riverfront Apartment Situated At Dunlin Drive, St.Mary's Island, With Both A River Facing Terrace & Rear South Facing Terrace. Allocated Underground Parking With Direct Lift Access.

Located at The Victory Apartments on Dunlin Drive, which is part of the "Fishing Village" area of St Mary's Island, is this waterfront 662 Sq.Ft. first floor two-bedroom apartment with both a riverfront terrace and a separate rear sun terrace. The terrace to the front of the property offers panoramic views up and down the River Medway and the rear terrace, accessed from the master bedroom, is south facing.

This is luxury riverside living and includes a separate fully fitted kitchen with breakfast bar and an open plan 13'11" x 11'11" living/dining room with access to a balcony stretching across the full width of the property and offering panoramic views along the River Medway.

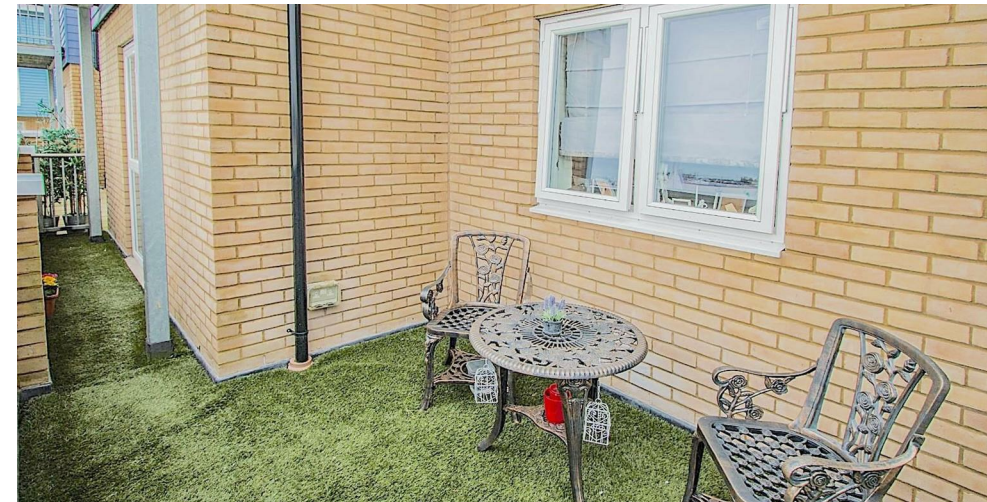
The 9'0" x 8'3" kitchen is fitted with a range of modern gloss white base and wall units, with integrated electric oven, hob and extractor, microwave, washing machine /dryer, dishwasher and fridge and freezer. The kitchen also benefits from a breakfast bar and has a coordinating cream tiled floor.

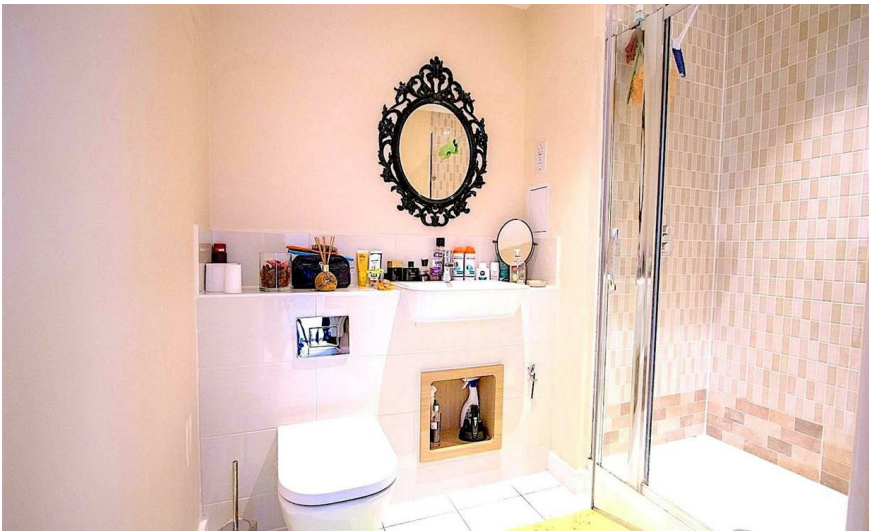
The master bedroom measures 12'1" x 10'0" with built in wardrobes to one wall, and en-suite shower room with double shower and quality fixtures & fittings including a heated towel rail. The additional special feature of this property is an outside sun terrace, accessed from the master bedroom, this is south facing. The second bedroom measures 10'3 x 10'0" and benefits from river views. In addition there is a good-sized main bathroom with a white suite and a heated towel rail.

This apartment benefits from gas central heating and double glazing and comes with the remainder of the 10-year NHBC building warranty. There is lift access and an allocated parking space, secure bike store and a communal lawned garden area with views of the river.

St. Mary's Island offers a peaceful, scenic, riverside setting with close proximity to St. Mary's Island Church of England Primary School, doctors' surgery, restaurants, shops, cinema and pubs. The island is close to a number of mainline railway stations with excellent commutable links to London and throughout Kent. There is also an island bus service connecting the island to nearby train stations. The island is within easy reach of the M2 and M20 motorways. Commuters can also benefit from the Kings ferry coach service.

Victory Apartments Dunlin Drive has an A1 EWS1 Certificate.





- TWO BEDROOM WATERFRONT APARTMENT AT "THE FISHING VILLAGE" ST MARY'S ISLAND
- 662 SQ.FT APARTMENT WITH BOTH A RIVERFRONT BALCONY AND SEPARATE SUN TERRACE
- TWO DOUBLE BEDROOMS
- SEPARATE FULLY FITTED KITCHEN
- EN SUITE TO MASTER BEDROOM
- QUALITY FIXTURES & FITTINGS
- ALLOCATED PARKING
- LIFT ACCESS
- CLOSE TO LOCAL AMENITIES ON THE QUAYS
- HIGHLY DESIRABLE LOCATION



THE AGENT ON THE QUAYS

Company Reg Number: 08789210 - Registered Office: 12, Station Court, Station Approach, Wickford, Essex, SS11 7AT

