



Dunlin Drive (Victory apartments), St. Mary's Island, ME4 3JA

Offers in the region of £249,995



Third Floor Riverside Apartment With Panoramic Views Along The River Medway From Picture Lounge Windows & Water facing Balcony. This Apartment is located at the 'Victory Apartments', Built As The Last Part Of The 'Fishing Village Development' On St. Mary's Island.

This third floor apartment is located in a waterfront position in the fishing village on St. Mary's Island and offers stunning views along the River Medway. This apartment is presented and maintained to a high standard by its present owner.

The main living room offers those views along the River Medway, with double doors that open onto a waterfront balcony that give views in both directions along and across the river. The views in one direction towards Upnor in the west and in the other towards the River Thames to the north.

The kitchen is open plan to the living area and offers all the integrated appliances you would expect, including an electric oven, hob & extractor, microwave, dishwasher, fridge/freezer and washing machine. There is a full range of wall and floor units with a contrasting work surface.

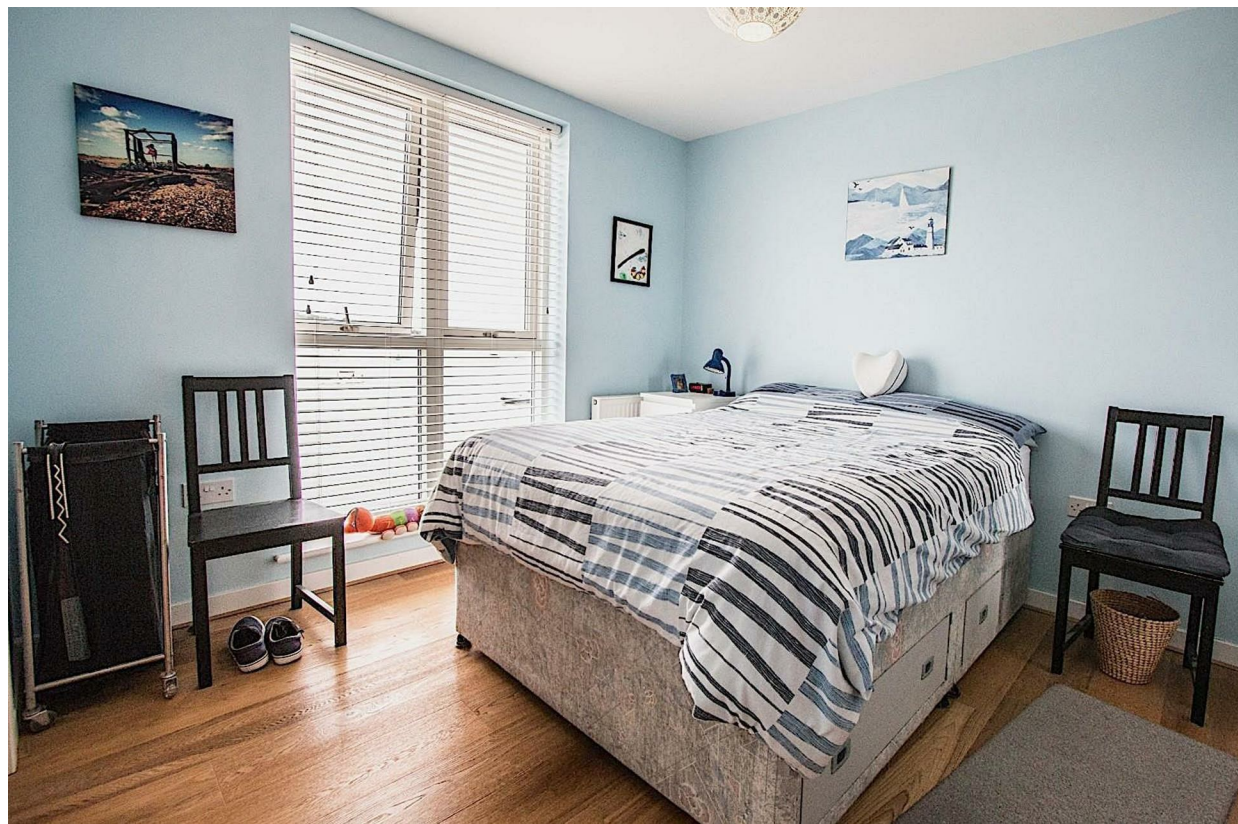
The master bedroom measures 11'10 x 9'11 with views onto the river, also has an en suite bathroom, the second bedroom measures 12'9 x 8'2 also with views to the River Medway, and the bathroom has been fitted with a contemporary white suite with heated towel rail.

These apartments were completed in 2014 and offer double glazed windows and gas central heating throughout.

Undercover allocated parking is provided for one vehicle with direct lift access.

These apartments also benefit from video security entryphone.





- Stunning River Medway Views
- Third Floor Apartment
- River front Balcony
- 11'10 x 9'11 master bedroom
- 17'1 x 12'7 Living Room
- Total living Space 654 Sq.Ft.
- Allocated Undercover Parking With Direct Lift Access
- Gas Central Heating & Double Glazing
- Desirable Fishing Village Location
- Close To All Amenities On The Quays



THE AGENT ON THE QUAYS

Company Reg Number: 08789210 - Registered Office: 12, Station Court, Station Approach, Wickford, Essex, SS11 7AT

