



Dunlin Drive (Victory apartments), St. Mary's Island, ME4 3JA

Offers in the region of £249,995



**** UNEXPECTEDLY BACK TO MARKET **** A THIRD FLOOR CORNER APARTMENT WITH STUNNING VIEWS ALONG THE RIVER MEDWAY FROM A WATERFRONT BALCONY. SITUATED IN THE THE HIGHLY SOUGHT AFTER 'FISHING VILLAGE' DEVELOPMENT ON ST.MARY'S ISLAND.

This outstanding 3rd floor apartment is located in a waterfront position in the fishing village on St. Mary's Island, offering panoramic views along the River Medway. Presented and maintained to a high standard by its present owner.

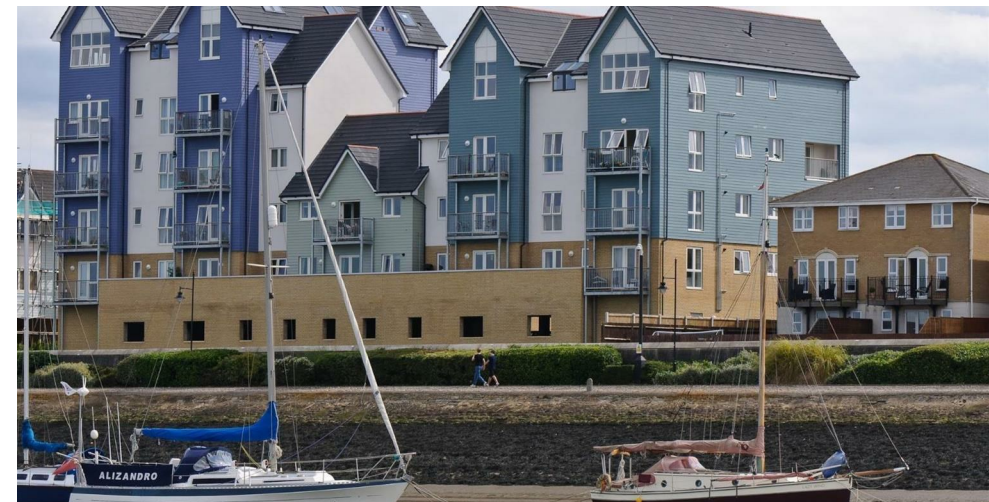
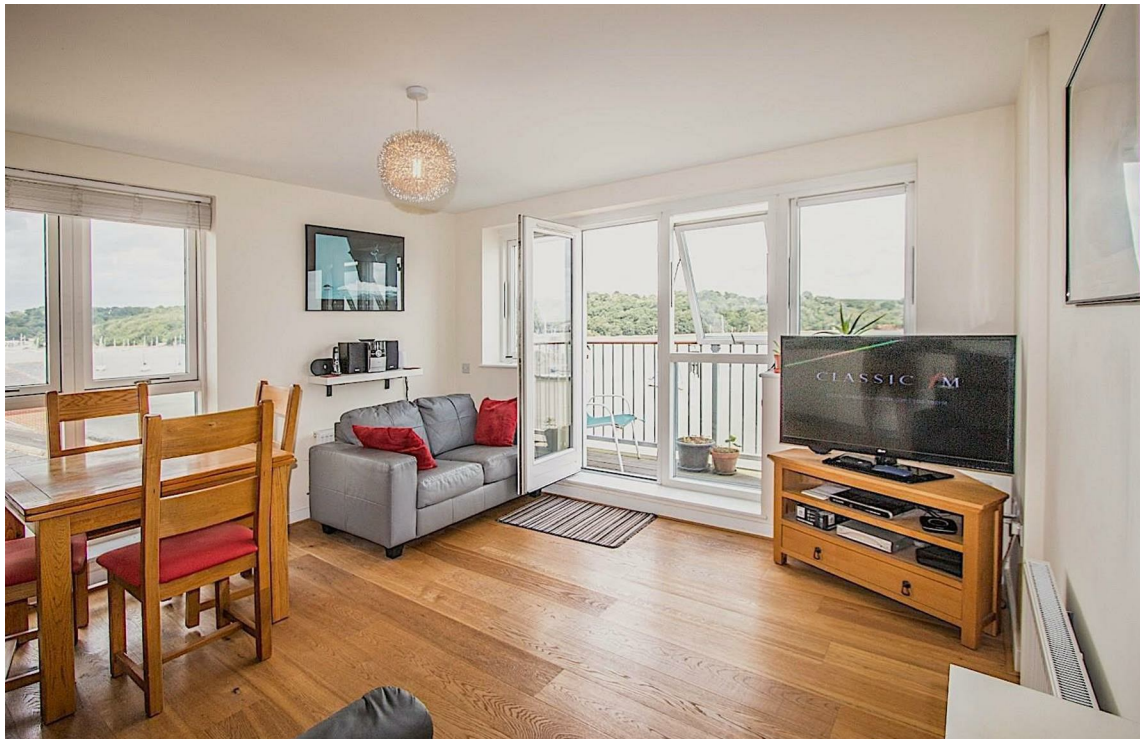
The main living room offers breathtaking views along the River Medway, with double doors that open onto a waterfront balcony that gives panoramic views in both directions along and across the river, with views in one direction towards Upnor in the west and in the other towards the River Thames to the north.

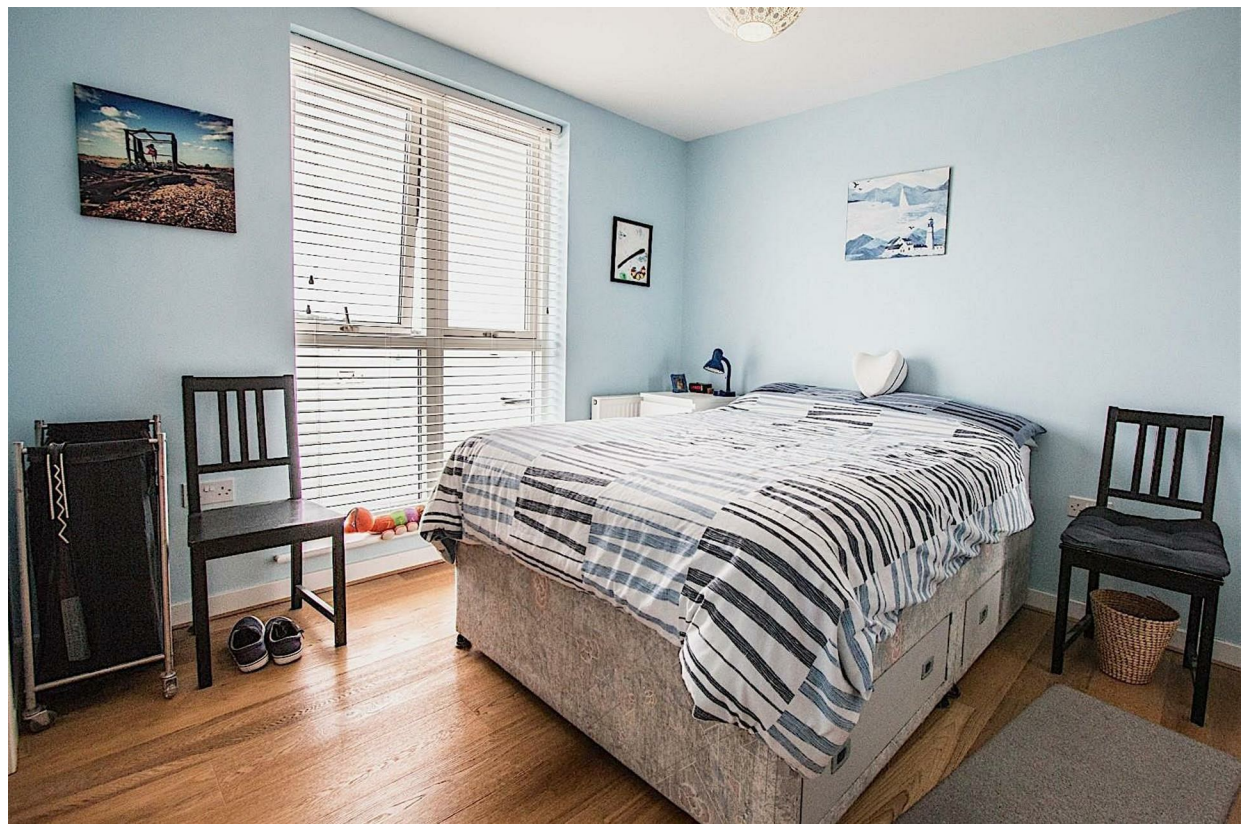
The kitchen is open plan to the living area and offers all the integrated appliances you would expect, including an electric oven, hob & extractor, microwave, dishwasher, fridge/freezer and washing machine. There is a full range of wall and floor units with a contrasting work surface.

The master bedroom measuring 11'10 x 9'11 with waterside views, also has an en suite bathroom, the second bedroom measures 12'9 x 8'2 also with views of the river Medway, and the bathroom has been fitted with a contemporary white suite with heated towel rail.

Double glazed windows and gas central heating with radiators are fitted throughout.

Undercover allocated parking is provided for one vehicle.





- Stunning River Medway Views
 - Third Floor Apartment
 - Waterfront Balcony
 - 11'10 x 9'11 master bedroom
 - 17'1 x 12'7 Living Room
 - Total living Space 654 Sq.Ft.
 - Allocated Parking
 - Gas Central Heating & Double Glazing
- Desirable Fishing Village Location
 - Close To All Amenities On The Quays



THE AGENT ON THE QUAYS

Company Reg Number: 08789210 - Registered Office: 12, Station Court, Station Approach, Wickford, Essex, SS11 7AT

