





£360,000

Offered to the market with NO ONWARD CHAIN this three bedroom family home backing on to fields is in need of modernisation. Comprising kitchen, lounge/dining room, family bathroom and downstairs WC, the property also has front & rear gardens and allocated parking close by.

Property Description

STORM PORCH

Double glazed UPVC front door to:

ENTRANCE HALL

Radiator, stairs to first floor, understairs storage cupboard, doors to lounge/diner, kitchen and cloakroom.

CLOAKROOM

Frosted double glazed window to front aspect. Low level w.c., wall mounted wash hand basin.

KITCHEN

Double glazed window to front aspect. Range of wall mounted and floor standing units with roll edge work surface over, one and a half stainless steel single drainer sink with mixer tap, integrated oven and gas hob with extractor fan over, space for washing machine, undercounter fridge/freezer, tiled floor, door to lounge/dining room.

LOUNGE/DINING ROOM

Double glazed windows to side and rear aspects, part glazed door to rear. Two radiators.

LANDING

Storage cupboard housing gas boiler, access to loft space, airing cupboard housing hot water cylinder, doors to:

BEDROOM ONE

Double glazed window to rear aspect. Radiator, built in wardrobe.

BEDROOM TWO

Double glazed window to front aspect. Radiator, built in storage cupboard.

BEDROOM THREE

Double glazed window to rear aspect.

BATHROOM

Frosted double glazed window to front aspect. Low level w.c., wash hand basin, walk in shower cubicle, towel radiator, tiled walls.

OUTSIDE

PARKING

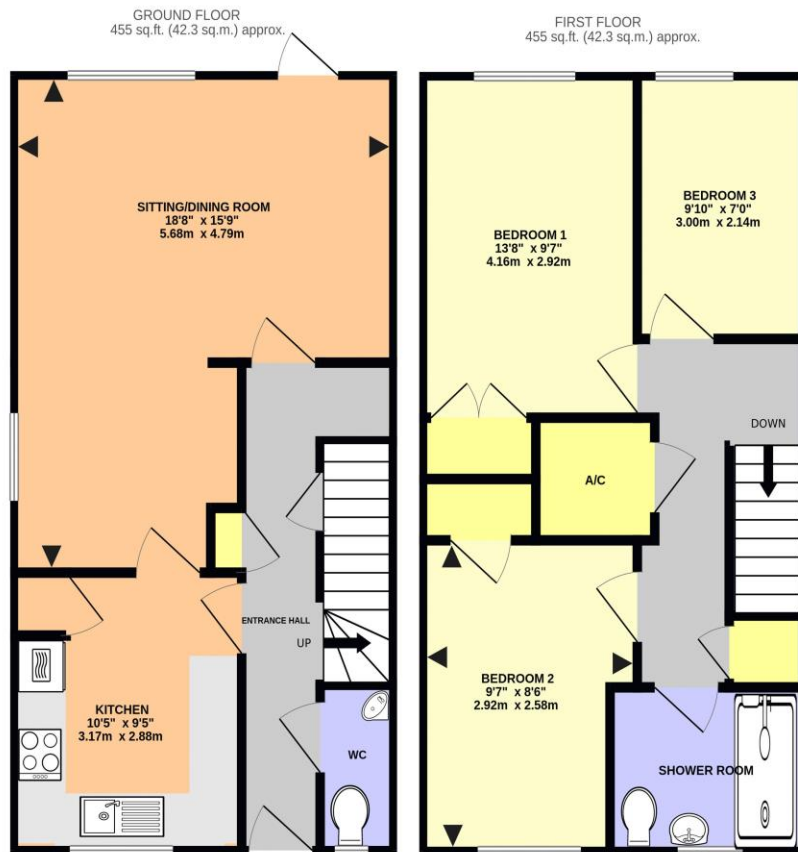
Allocated parking space.

FRONT GARDEN

Block paved pathway to front door, lawn, mature flower and shrub beds,

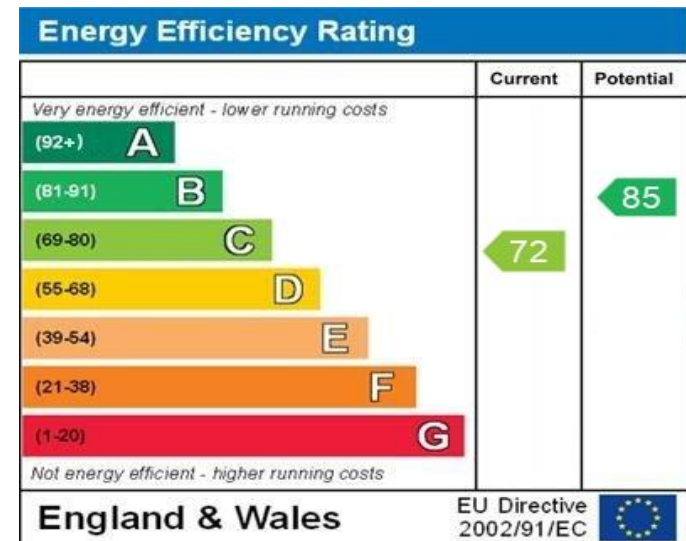
REAR/SIDE GARDEN

Low maintenance rear/side garden, mainly laid to patio, mature flower and shrub beds, timber storage shed, gated side access.



LOMOND ROAD, HEMEL HEMPSTEAD HP2 6PB (PRODUCED FOR MICHAEL ANTHONY)

TOTAL FLOOR AREA: 911 sq.ft. (84.6 sq.m.) approx.
 No accuracy to this image, text or measurements is guaranteed
 Made with Metropix ©2025



WWW.EPC4U.COM

MONEY LAUNDERING REGULATIONS 2017 intending purchasers will be asked to produce identification and proof of financial status when an offer is received. We would ask for your co-operation in order that there will be no delay in agreeing the sale.

THE CONSUMER PROTECTION REGULATIONS 2008 The Agent has not tested any apparatus, equipment, fixtures and fittings or services and so cannot verify that they are in working order or fit for the purpose. A Buyer is advised to obtain verification from their Solicitor or Surveyor. References to the Tenure of a Property are based on information supplied by the Seller. The Agent has not had sight of the title documents. A Buyer is advised to obtain verification from their Solicitor. You are advised to check the availability of this property before travelling any distance to view. We have taken every precaution to ensure that these details are accurate and not misleading. If there is any point which is of particular importance to you, please contact us and we will provide any information you require. This is advisable, particularly if you intend to travel some distance to view the property. The mention of any appliances and services within these details does not imply that they are in full and efficient working order. These particulars are in draft form awaiting Vendors confirmation of their accuracy. These details must therefore be taken as a guide only and approved details should be requested from the agents

33 Marlowes Hemel Hempstead Herts HP1 1LA
 01442 260025 | hemel@maea.co.uk