







**£450,000**

Situated within the sought-after Swallow Fields development, this modern semi-detached home boasts spacious living accommodation, which includes a downstairs cloakroom, fitted kitchen with built-in appliances, a lounge/dining room with double doors leading to a fully enclosed rear garden, three bedrooms, the master with an en-suite shower room, and a family bathroom. With a garage and driveway alongside.

# Property Description

## Entrance Hall

Front door opens to the entrance hall, stairs to the first floor, storage cupboard.

## Cloakroom

Comprising a low level WC wash hand basin with mixer tap, tiled splash backs, extractor fan, radiator.

## Kitchen

Fitted with a range of base and eye level storage units, work surface areas with an inset one and a half bowl single drainer stainless steel sink unit with mixer tap set below a double glazed window to the front, built in four ring gas hob with splash back and stainless steel canopy extractor hood over and electric oven below, integrated fridge freezer, dish washer and washing machine, cupboard housing gas boiler serving central heating, radiator, tiled surrounds and flooring.

## Lounge/Diner

With walk in storage cupboard, two radiators, TV point, twin double glazed doors and windows to the rear garden, wood effect flooring.

## First Floor Landing

Stairs to the first floor, radiator, access to the loft, storage cupboard.

## Bedroom One

With a double glazed window to the rear, radiator, built in wardrobe, radiator.

## Ensuite

A three piece suite comprising a low level WC, wash hand basin with mixer tap, tiled shower cubicle, extractor fan, heated towel rail, double glazed window to the side.

## Bedroom Two

Double glazed window to the front, radiator.

## Bedroom Three

Double glazed window to the rear, radiator.

## Bathroom

A three piece suite comprising a low level WC, wash hand basin with mixer tap, bath with mixer tap and shower over, tiled surrounds, double glazed window to the front, radiator, extractor fan.

## Outside

### Garage

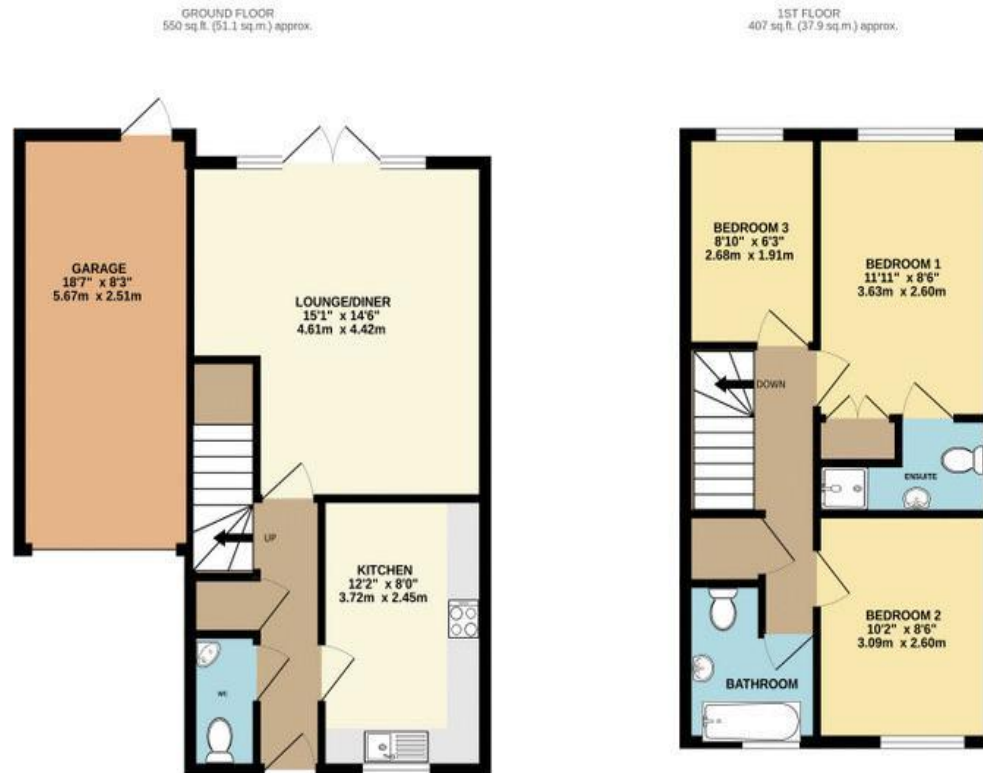
Situated alongside with a metal up and over door, power and lighting, eaves storage space, courtesy door to the rear garden.

### Front Garden

Open plan with path to front door outside light.

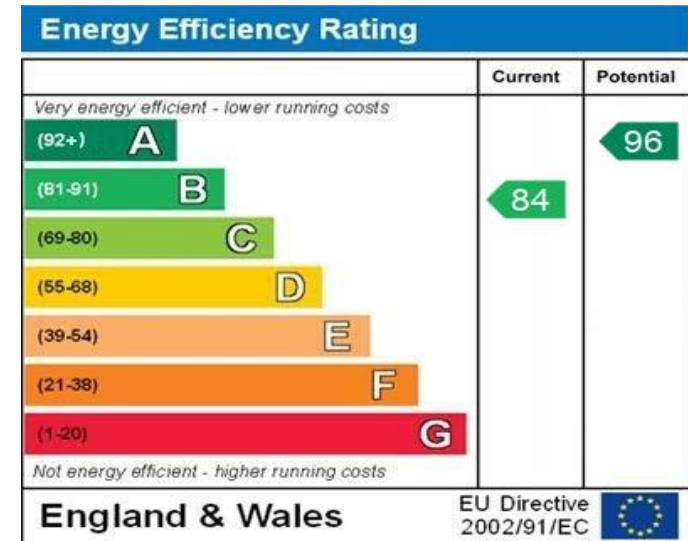
### Rear Garden

A fully enclosed rear garden, with a paved patio area to the immediate rear, laid mainly to lawn.



TOTAL FLOOR AREA : 958 sq.ft. (89.0 sq.m.) approx.

Whilst every attempt has been made to ensure the accuracy of the floorplans contained here, measurements of doors, windows, rooms and any other items are approximate and no responsibility is taken for any error, omission or mis-statement. This plan is for illustrative purposes only and should be used as such by any prospective purchaser. The services, systems and appliances shown have not been tested and no guarantee as to their operability or efficiency can be given.  
Made with Metropac CDS



WWW.EPC4U.COM

MONEY LAUNDERING REGULATIONS 2017 intending purchasers will be asked to produce identification and proof of financial status when an offer is received. We would ask for your co-operation in order that there will be no delay in agreeing the sale.

THE CONSUMER PROTECTION REGULATIONS 2008 The Agent has not tested any apparatus, equipment, fixtures and fittings or services and so cannot verify that they are in working order or fit for the purpose. A Buyer is advised to obtain verification from their Solicitor or Surveyor. References to the Tenure of a Property are based on information supplied by the Seller. The Agent has not had sight of the title documents. A Buyer is advised to obtain verification from their Solicitor. You are advised to check the availability of this property before travelling any distance to view. We have taken every precaution to ensure that these details are accurate and not misleading. If there is any point which is of particular importance to you, please contact us and we will provide any information you require. This is advisable, particularly if you intend to travel some distance to view the property. The mention of any appliances and services within these details does not imply that they are in full and efficient working order. These particulars are in draft form awaiting Vendors confirmation of their accuracy. These details must therefore be taken as a guide only and approved details should be requested from the agents

33 Marlowes Hemel Hempstead Herts HP1 1LA  
01442 260025 | hemel@maea.co.uk